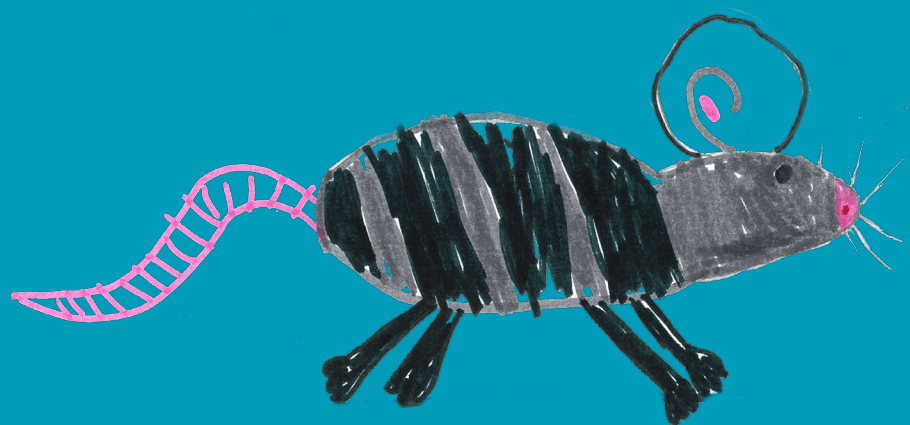
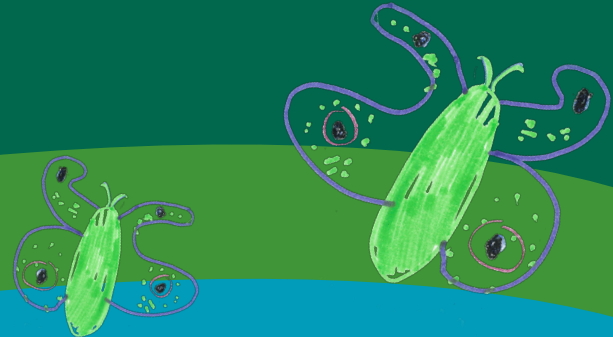


Keep Colorado Schools PEST FREE



- IPM promotes low risk prevention and management techniques to reduce pest populations and pesticide applications.

IPM
Integrated Pest Management is an effective, environmentally sensitive, and health-conscious approach to pest management.

- IPM relies on the knowledge of scientists and pest management professionals: with education we can outsmart our pests!



Reduce clutter and organize closets, cabinets, and storage facilities to eliminate shelter for unwanted pests.

- IPM is *especially* important in schools because children are more vulnerable to toxic chemicals than adults.



Pests enter buildings in search of food and water. Make sure to store edible materials in airtight plastic containers.

Teacher Checklist

- ☒ Reduce clutter and give pests nowhere to live in your space.
- ☒ Store all edible items in airtight containers. Edible items include food, edible art and science supplies, pet food, etc.
- ☒ Make sure all trash receptacles are emptied at the end of each day. If waste is generated that cannot be contained call for help with immediate removal.
- ☒ Pests hitchhike; keep student's coats and backpacks in designated places with sticky monitoring traps close by.
- ☒ Clean up any accidental spills and food debris that occurs during the day. Ants can find food or drink spills in minutes.

Student Checklist

- ☒ Report pests or evidence of pests to teachers, so they can enter the information into a pest sighting log.
- ☒ Do not disturb monitoring traps.
- ☒ Keep coats and backpacks in designated areas.
- ☒ Store lunches and snacks in sealed food containers. Many pests can eat through regular wrappers or zip lock bags and will find your snacks in desks, cubbies or lockers.
- ☒ Empty clothing from cubbies or lockers every Friday. Mice forage for nesting material as well as food.

Colorado State University
Extension

Thanks to Ms. Ferachi's second grade class at Linton Elementary School in Fort Collins, Colorado for the drawings of pests.