

Colorado Division of Criminal Justice
Summer 2012
Interim Prison Population
Forecasts

Pursuant to 24-33.5-503 (m), C.R.S.

August 2012
Linda Harrison

Office of Research and Statistics
Division of Criminal Justice
Colorado Department of Public Safety
700 Kipling Street, Suite 3000
Denver, CO 80215
Telephone: 303-239-4442
Fax: 303-239-4491
<http://dcj.state.co.us/ors>

Office of Research and Statistics
Kim English, Research Director
Division of Criminal Justice
Jeanne M. Smith, Director
Colorado Department of Public Safety
James H. Davis, Executive Director



The Colorado Division of Criminal Justice Summer 2012 Interim Prison Population and Parole Caseload Projections

Interim Prison Population Projection

The December 2011 DCJ projections indicated that the Colorado prison inmate population would decline by 5.2 percent over the course of FY 2012. The actual population at year-end was 1.9 percent lower than expected at 21,037. This represents an unprecedented 7.0 percent decrease. After decades of continuous growth, the increase slowed in FY 2007 and began to slowly decline in fiscal years 2010 and 2011. In the most recent year, this decline accelerated beyond expectations.

The divergence between the DCJ year-end projection and the actual population decline is attributable to a number of factors. Total prison admissions fell by 8.3 percent, resulting in 2.1 percent fewer admissions than expected. New court commitments declined by 4.4 percent, parole returns due to technical violations declined by 11.4, and parole returns with a new crime fell by 17.2 percent.

Additionally, releases from prison increased by 4.9 percent, resulting in 2.2 percent more releases than accounted for in the DCJ 2011 projections. This increase is due to the 72.1 percent increase in discretionary parole releases, as the numbers of all other types of prison releases actually declined. This increase was particularly evident in the last half of FY 2012, coinciding with the appointment of new members to the parole board, who had a mandate from the Governor's office to more closely adhere to statutory release considerations.

In December 2011, the DCJ projections indicated that the female inmate population would fall from 2,098 to 2,033, or 3.1 percent by the end of FY 2012. The actual rate of decline far exceeded this expectation, at 10.2 percent.

Based on these factors, the DCJ 2011 projections have been significantly adjusted downward for the 2012 interim projections. The quarterly and annual adjusted figures are displayed in Tables 1 and 2, below. Figure 1 depicts the actual year-end prison populations for fiscal years 2010 through 2012, and compares the DCJ December 2011 projections to the Summer 2012 interim projections. Figure 2 displays the same for the female prison population projections.

Table 1. DCJ Summer 2012 Interim Quarterly Adult Prison Population Projections

Fiscal Year	End of month:	Total Population	Quarterly Growth	Male Population	Quarterly Growth	Female Population	Quarterly Growth
2011	June*	22610	-0.19%	20512	-0.26%	2098	0.48%
	September*	22508	-0.45%	20391	-0.59%	2117	0.91%
	December*	21887	-2.76%	19852	-2.64%	2035	-3.87%
	March*	21326	-2.56%	19389	-2.33%	1937	-4.82%
2012	June*	21037	-1.36%	19152	-1.22%	1885	-2.68%
	September	20679	-1.70%	18851	-1.57%	1827	-3.07%
	December	20423	-1.24%	18630	-1.17%	1793	-1.89%
	March	20339	-0.41%	18543	-0.47%	1795	0.16%
2013	June	20162	-0.87%	18362	-0.98%	1800	0.27%
	September	20058	-0.52%	18274	-0.48%	1784	-0.92%
	December	19972	-0.43%	18214	-0.33%	1758	-1.45%
	March	19929	-0.21%	18187	-0.15%	1742	-0.91%
2014	June	19845	-0.42%	18101	-0.47%	1744	0.11%
	September	19773	-0.36%	18053	-0.27%	1720	-1.35%
	December	19673	-0.51%	17952	-0.56%	1721	0.05%
	March	19686	0.06%	17982	0.16%	1704	-0.98%
2015	June	19538	-0.75%	17827	-0.86%	1711	0.40%
	September	19425	-0.58%	17735	-0.52%	1690	-1.22%
	December	19374	-0.26%	17702	-0.18%	1672	-1.06%
	March	19338	-0.19%	17678	-0.14%	1660	-0.71%
2016	June	19233	-0.54%	17572	-0.60%	1661	0.06%
	September	19133	-0.52%	17485	-0.50%	1648	-0.77%
	December	19071	-0.32%	17445	-0.23%	1627	-1.32%
	March	19065	-0.03%	17448	0.02%	1618	-0.55%
2017	June	18985	-0.42%	17375	-0.41%	1610	-0.49%
	September	18844	-0.74%	17248	-0.73%	1596	-0.86%
	December	18781	-0.33%	17210	-0.22%	1571	-1.55%
	March	18777	-0.02%	17217	0.04%	1560	-0.69%
2018	June	18682	-0.51%	17114	-0.60%	1568	0.51%

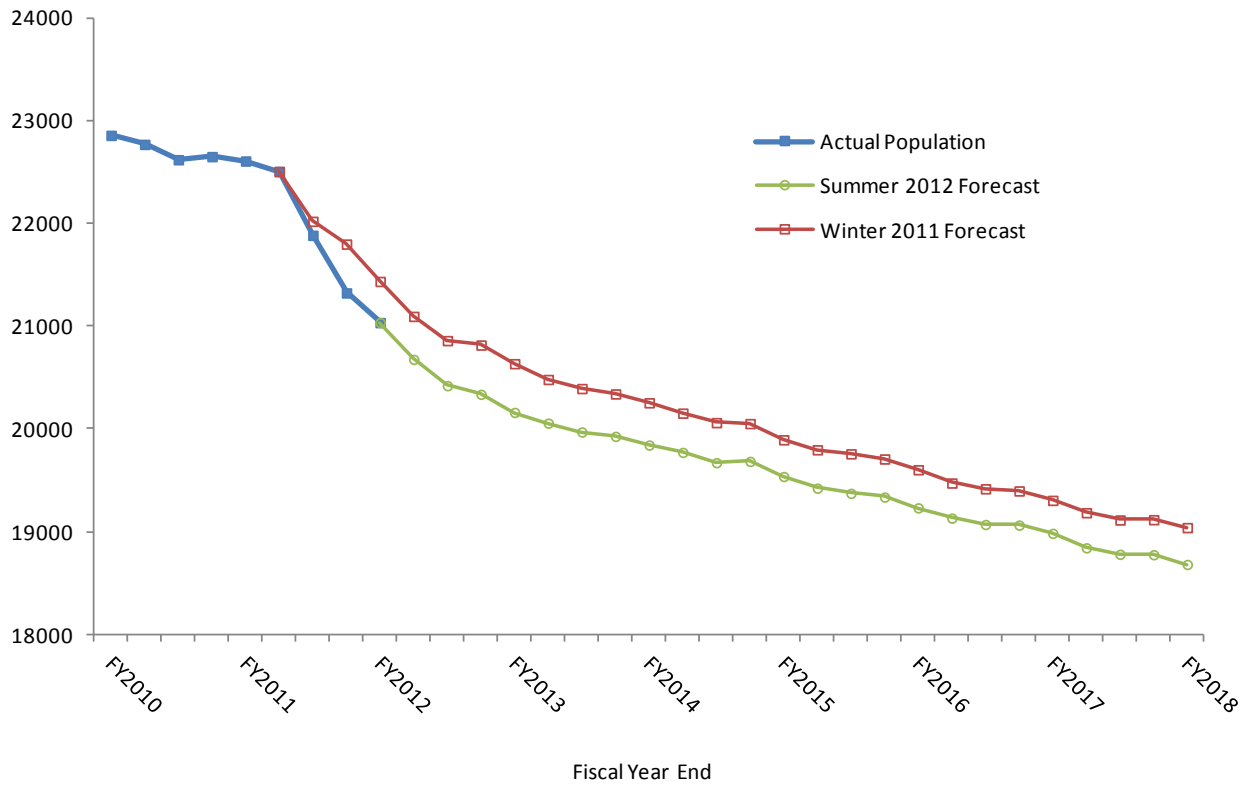
* Actual data provided by Colorado Department of Corrections Monthly Population and Capacity Reports, available at: <http://www.doc.state.co.us/statistical-reports-and-bulletins>

Table 2. DCJ Summer 2012 Interim Annual Adult Prison Population Projections

End of Fiscal Year	Total Population	Quarterly Growth	Male Population	Quarterly Growth	Female Population	Quarterly Growth
FY2011*	22610	-1.09%	20512	-1.22%	2098	0.19%
FY2012*	21037	-6.96%	19152	-6.63%	1885	-10.15%
FY2013	20162	-4.16%	18362	-4.12%	1800	-4.50%
FY2014	19845	-1.57%	18101	-1.42%	1744	-3.14%
FY2015	19538	-1.55%	17827	-1.51%	1711	-1.87%
FY2016	19233	-1.56%	17572	-1.43%	1661	-2.91%
FY2017	18985	-1.29%	17375	-1.12%	1610	-3.10%
FY2018	18682	-1.60%	17114	-1.50%	1568	-2.58%

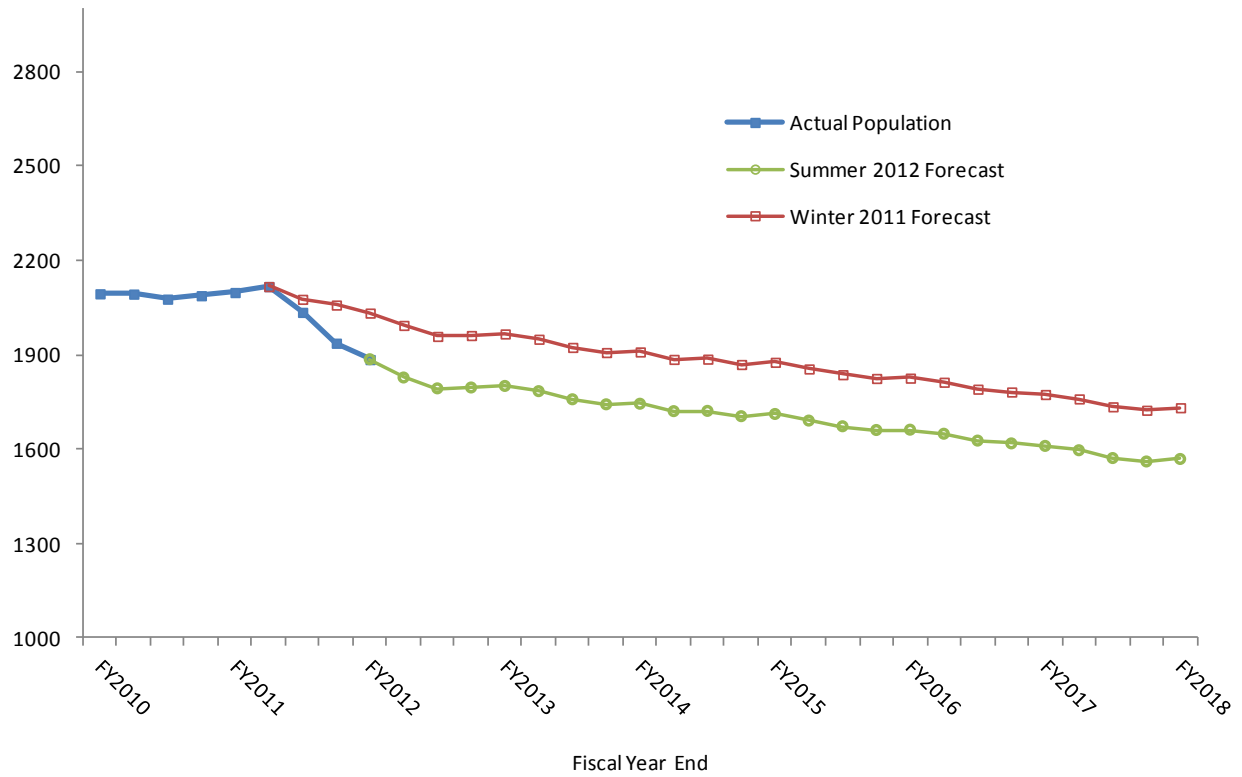
* Actual data provided by Colorado Department of Corrections Monthly Population and Capacity Reports, available at: <http://www.doc.state.co.us/statistical-reports-and-bulletins>

Figure 1. Actual Quarterly Inmate Population FY 2011 – FY 2012, DCJ December 2011 Projected Population and Summer 2012 Interim Projections through FY 2018



Sources: Colorado Department of Corrections Monthly Population and Capacity Reports, available at: <http://www.doc.state.co.us/statistical-reports-and-bulletins>; Harrison, Linda (2012). *Colorado Division of Criminal Justice Correctional Population Forecasts*. Colorado Division of Criminal Justice, Denver, Colorado. Available at: <http://dcj.state.co.us/ors/ppp.htm>

Figure 2: Actual Quarterly Female Inmate Population FY 2011 – FY 2012, DCJ December 2011 Projected Population and Summer 2012 Interim Projections through FY 2018



Sources: Colorado Department of Corrections Monthly Population and Capacity Reports, available at: <http://www.doc.state.co.us/statistical-reports-and-bulletins>; Harrison, Linda (2012). *Colorado Division of Criminal Justice Correctional Population Forecasts*. Colorado Division of Criminal Justice, Denver, Colorado. Available at: <http://dcj.state.co.us/ors/ppp.htm>

Interim Parole Population Projection

The DCJ December 2011 projections anticipated that the domestic parole population would increase by 1.3 percent by the end of FY 2012. However, releases to parole exceeded expectations, and the parole population actually grew by 2.9 percent. The increase in parole releases is expected to accelerate in the upcoming year, followed by a slow decline beginning in FY 2014 consequent to the anticipated continuing fall in the size of the prison population. The DCJ 2012 interim projections anticipate the parole caseload will decline by an average of 1.7 percent per year between fiscal years 2014 and 2018.

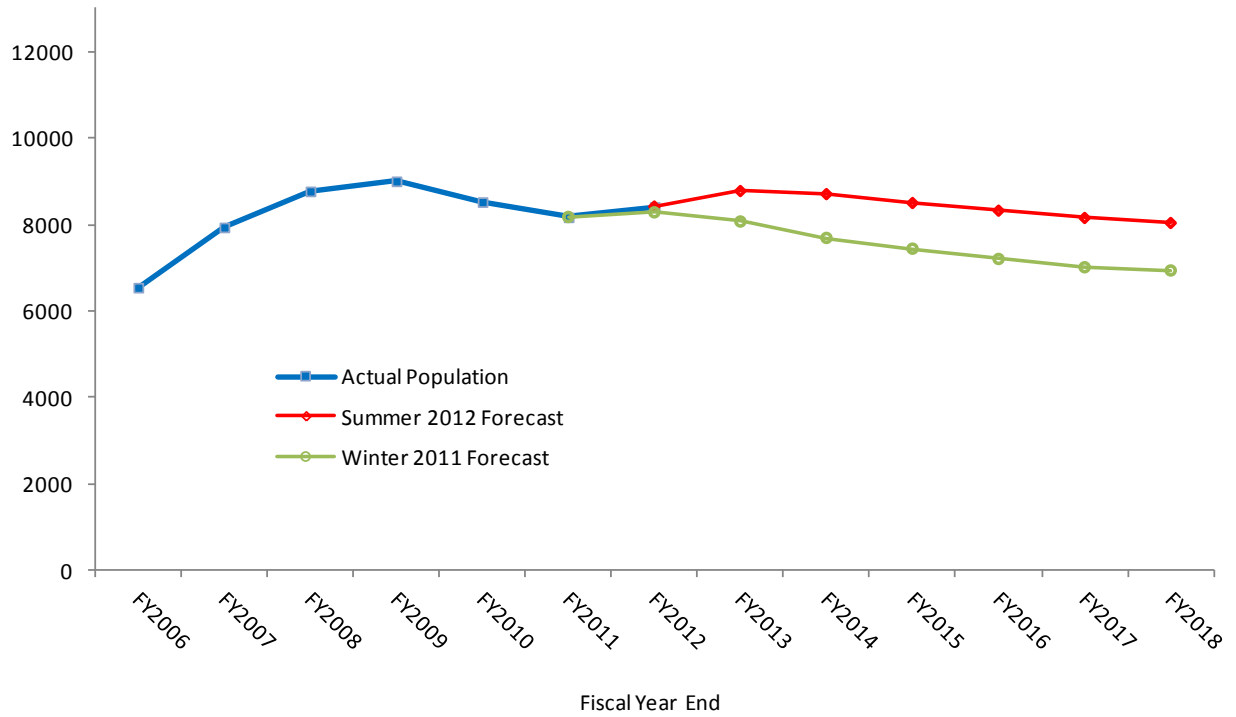
Table 3 displays the DCJ 2012 interim year-end domestic parole caseload projections. Figure 3 graphically depicts the actual year-end parole caseload for fiscal years 2006 through 2011, and compares the December 2011 DCJ parole projections to the current interim projections.

Table 3. DCJ Summer 2012 Interim Parole Caseload Projections

FY	Parole Caseload	Annual Growth
<i>FY2011*</i>	8181	-4.15%
<i>FY2012*</i>	8422	2.95%
FY2013	8781	4.27%
FY2014	8711	-0.81%
FY2015	8504	-2.37%
FY2016	8327	-2.09%
FY2017	8158	-2.03%
FY2018	8041	-1.43%

* Actual data. Source: Colorado Department of Corrections Monthly Population and Capacity Reports, available at: <http://www.doc.state.co.us/statistical-reports-and-bulletins>

Figure 3: Actual End-of-Fiscal Year Domestic Parole Caseload FY 2011 – FY 2012, December 2011 DCJ Parole Caseload Projection and Summer 2012 Interim Parole Caseload Projections through FY 2018



Sources: Colorado Department of Corrections Monthly Population and Capacity Reports, available at: <http://www.doc.state.co.us/statistical-reports-and-bulletins>; Harrison, Linda (2012). *Colorado Division of Criminal Justice Correctional Population Forecasts*. Colorado Division of Criminal Justice, Denver, Colorado. Available at: <http://dcj.state.co.us/ors/ppp.htm>