

Colorado Division of Criminal Justice

Summer 2011 Interim Correctional Population Forecasts

Pursuant to 24-33.5-503 (m), C.R.S.

August 2011

Linda Harrison

Office of Research and Statistics

Kim English, Research Director

Division of Criminal Justice

Jeanne M. Smith, Director

Colorado Department of Public Safety

Peter A. Weir, Executive Director

700 Kipling Street, Suite 1000
Denver, Colorado 80215
Telephone: (303) 239-4442
Fax Number: (303) 239-4491
<http://dcj.state.co.us/ors>

The Colorado Division of Criminal Justice Summer 2011 Interim Prison Population and Parole Caseload Projections

Introduction

The DCJ December 2010 prison population projections forecast that the Colorado adult prison population would decline by 2.4 percent in fiscal year (FY) 2011, from an end-of-year population of 22,860 to 22,314. The actual population as of June 30, 2011 was 22,610, a decline of 1.1 percent. Based on this actual year-end prison population and admission/release patterns observed over the past year, the DCJ December 2010 prison population projection has been adjusted upward each year between FY 2012 and FY 2017. While the December 2010 projection anticipated a 16.3 percent drop in the prison population between the end of FY 2011 and FY 2017, these interim projections predict a 14.1 percent decline over this time period.

Inmate Population

The December 2010 DCJ projections indicated that the prison population would fall to 22,314 by June 30, 2011. The actual year-end population was 22,610, 1.3 percent greater than expected. This discrepancy is based on a number of factors. While substantially fewer admissions occurred over the course of FY 2011 than were predicted, even fewer parole releases occurred. This error is particularly evident in the numbers of mandatory parole releases. Additionally, the December 2010 calculations may have prematurely implemented the impact of the legislation passed through House Bills 10-1338, 10-1352, 10-1360, 10-1373 and 10-1374. The impact of these bills will likely be realized to a greater degree in the upcoming years.

In December 2010, the DCJ projections forecast that the female inmate population would fall from 2,094 to 2,028 (3.1 percent) by the end of FY 2011. However, the number of women in prison actually increased by 0.2 percent, a significant deviation from the 8.6 percent reduction observed over the prior year. However, the female inmate population is expected to decline by 26.4 percent by the end of FY 2017, a slight adjustment from the 32.7 percent decrease forecast in December 2010.

The DCJ 2011 interim quarterly and annual prison population projections are displayed below in Tables 1 and 2, respectively. Figure 1 depicts a comparison of the December 2010 projections with the Summer 2011 interim projections. Figure 2 displays the same for the female prison population projections.

Table 1. DCJ Summer 2011 Interim Quarterly Adult Prison Population Projections

Fiscal Year	End of month:	Total Population	Quarterly Growth	Male Population	Quarterly Growth	Female Population	Quarterly Growth
2010	June*	22860	0.36%	20766	0.40%	2094	0.00%
	September*	22772	-0.38%	20679	-0.42%	2093	-0.05%
	December*	22623	-0.65%	20546	-0.64%	2077	-0.76%
	March*	22653	0.13%	20565	0.09%	2088	0.53%
2011	June*	22610	-0.19%	20512	-0.26%	2098	0.48%
	September	22500	-0.48%	20413	-0.43%	2087	-0.51%
	December	22281	-0.98%	20225	-0.92%	2056	-1.51%
	March	22154	-0.57%	20122	-0.51%	2032	-1.15%
2012	June	22111	-0.19%	20090	-0.16%	2021	-0.52%
	September	21880	-1.05%	19882	-0.99%	1999	-1.11%
	December	21692	-0.86%	19727	-0.77%	1964	-1.73%
	March	21657	-0.16%	19719	0.01%	1937	-1.36%
2013	June	21685	0.13%	19756	0.18%	1929	-0.45%
	September	21507	-0.82%	19611	-0.73%	1896	-1.68%
	December	21266	-1.12%	19394	-1.10%	1872	-1.27%
	March	21274	0.04%	19438	0.23%	1836	-1.92%
2014	June	21201	-0.34%	19369	-0.35%	1832	-0.22%
	September	20999	-0.95%	19186	-0.89%	1813	-1.04%
	December	20789	-1.00%	19008	-0.87%	1781	-1.77%
	March	20728	-0.29%	18969	-0.21%	1759	-1.24%
2015	June	20627	-0.49%	18884	-0.45%	1743	-0.91%
	September	20456	-0.83%	18739	-0.82%	1717	-1.49%
	December	20209	-1.21%	18539	-1.17%	1670	-2.74%
	March	20133	-0.38%	18485	-0.29%	1648	-1.32%
2016	June	20048	-0.42%	18416	-0.37%	1632	-0.97%
	September	19876	-0.86%	18277	-0.75%	1599	-2.02%
	December	19630	-1.24%	18056	-1.21%	1574	-1.56%
	March	19523	-0.55%	17972	-0.46%	1551	-1.46%
2017	June	19419	-0.53%	17875	-0.54%	1544	-0.45%

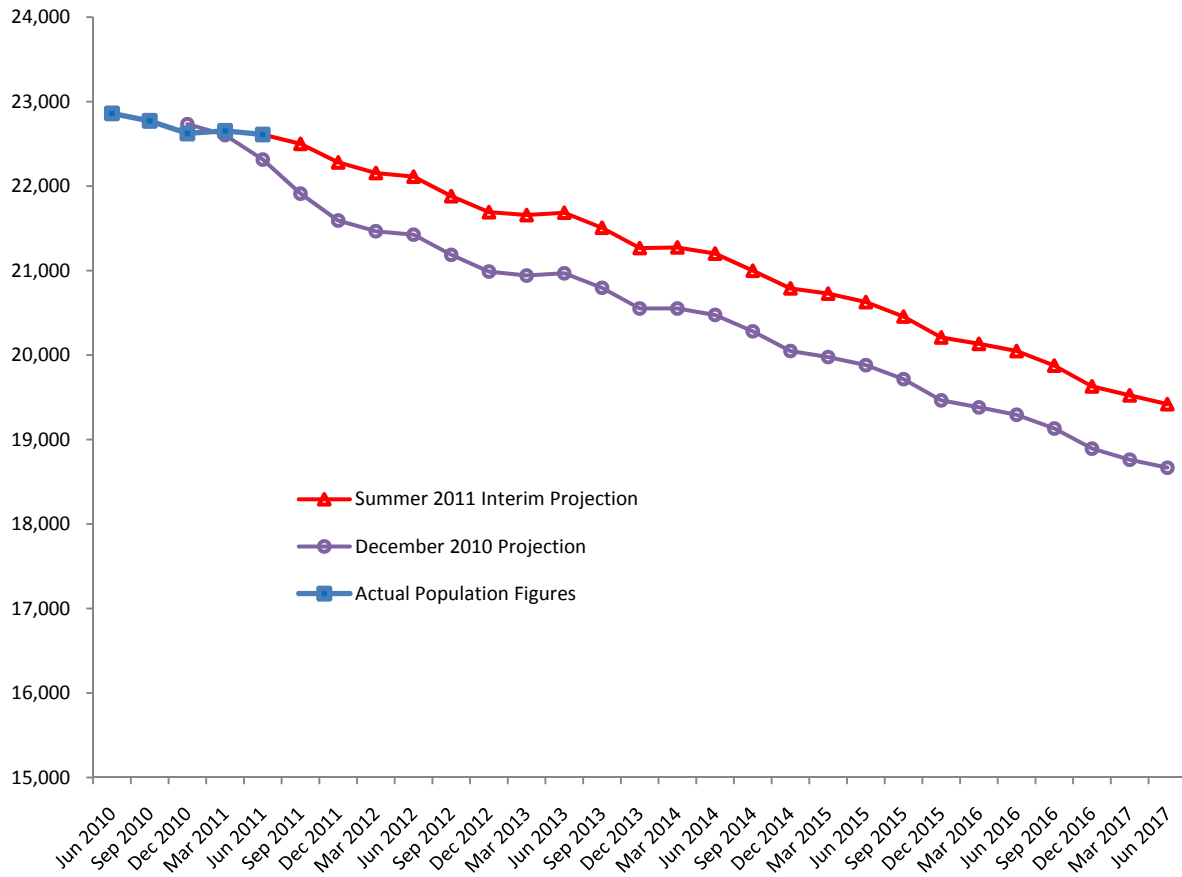
* Actual data provided by Colorado Department of Corrections Monthly Population and Capacity Reports, available at: <http://www.doc.state.co.us/statistical-reports-and-bulletins>

Table 2. DCJ Summer 2011 Interim Annual Adult Prison Population Projections

Fiscal Year	Total Population	Quarterly Growth	Male Population	Quarterly Growth	Female Population	Quarterly Growth
2010*	22860	-1.41%	20766	-0.49%	2094	-8.56%
2011*	22610	-1.09%	20512	-1.22%	2098	0.19%
2012	22111	-2.20%	20090	-2.06%	2021	-3.65%
2013	21685	-1.93%	19756	-1.66%	1929	-4.58%
2014	21201	-2.23%	19369	-1.96%	1832	-5.01%
2015	20627	-2.71%	18884	-2.50%	1743	-4.87%
2016	20048	-2.81%	18416	-2.48%	1632	-6.37%
2017	19419	-3.14%	17875	-2.94%	1544	-5.39%

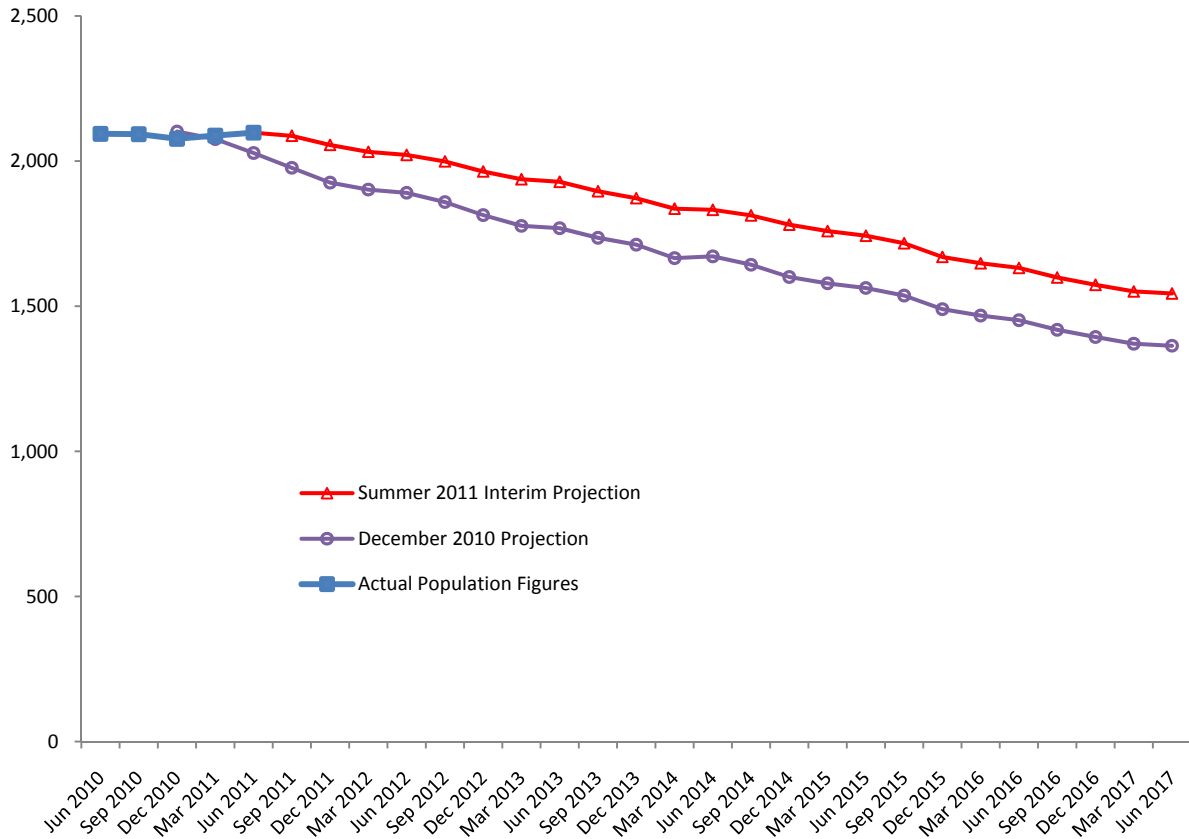
* Actual data provided by Colorado Department of Corrections Monthly Population and Capacity Reports, available at: <http://www.doc.state.co.us/statistical-reports-and-bulletins>

Figure 1. Actual Quarterly Inmate Population FY 2010 – FY 2011, DCJ December 2010 Projected Population and Summer 2011 Interim Projections through FY 2017



Sources: Colorado Department of Corrections Monthly Population and Capacity Reports, available at: <http://www.doc.state.co.us/statistical-reports-and-bulletins>; Harrison, Linda (2010). *December 2010 Correctional Population Forecasts*. Colorado Division of Criminal Justice, Denver, Colorado. Available at: <http://dcj.state.co.us/ors/ppp.htm>

Figure 2: Actual Quarterly Female Inmate Population FY 2010 – FY 2011, DCJ December 2010 Projected Population and Summer 2011 Interim Projections through FY 2017



Sources: Colorado Department of Corrections Monthly Population and Capacity Reports, available at: <http://www.doc.state.co.us/statistical-reports-and-bulletins>; Harrison, Linda (2010). *December 2010 Correctional Population Forecasts*. Colorado Division of Criminal Justice, Denver, Colorado. Available at: <http://dcj.state.co.us/ors/ppp.htm>

Parole Caseload Projections

The DCJ December 2010 projections anticipated that the domestic parole population would increase by 2.3 percent by the end of FY 2011. However, releases to parole did not meet expectations, and the parole population actually declined by 4.1 percent. Releases to parole are expected to increase in the upcoming year, followed by a decline beginning in FY 2013 subsequent to the anticipated fall in the size of the prison population. The DCJ 2011 interim projections indicate that the parole caseload will decline by an average of 3.6 percent per year between the end of FY 2012 and FY 2017, with a total decline of 16.8 percent over this five-year period.

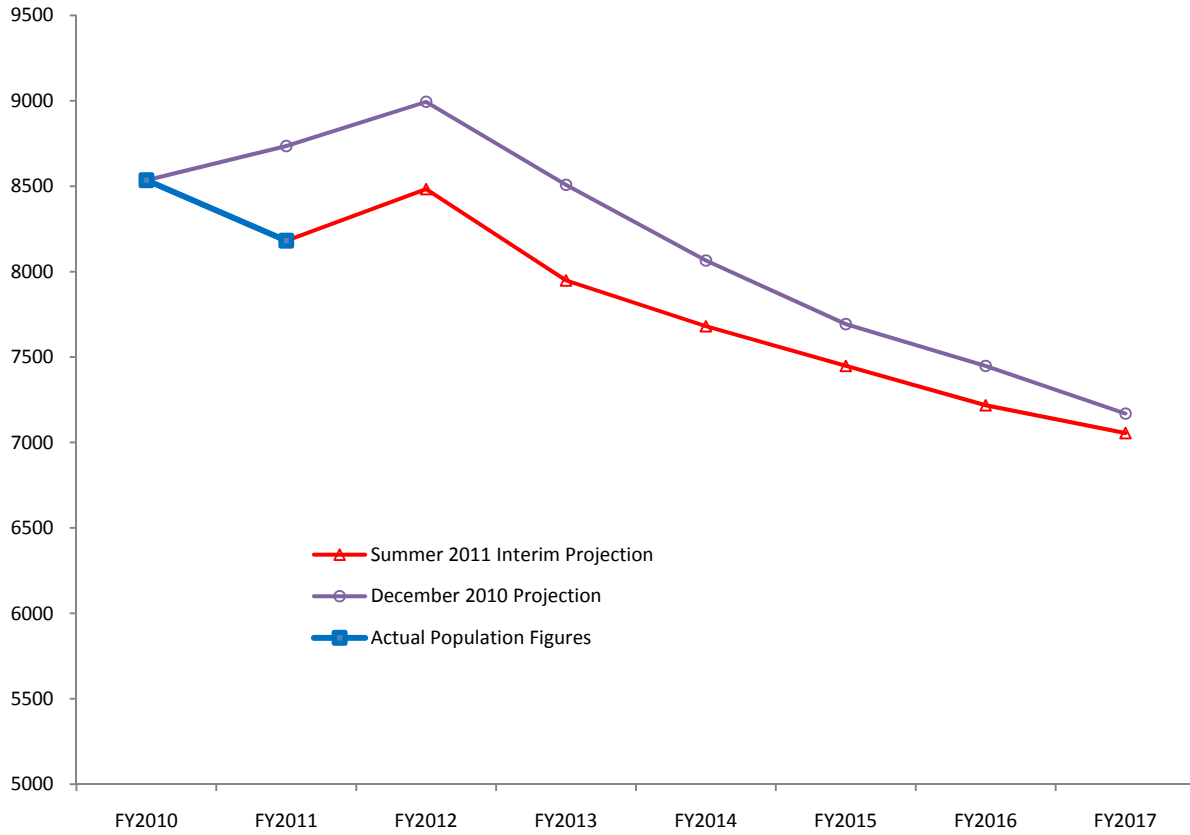
Table 3 displays the DCJ 2011 interim year-end domestic parole caseload projections. Figure 3 compares the Winter 2009 DCJ parole projections to the current interim projections.

Table 3. DCJ Summer 2011 Interim Parole Caseload Projections

FY	Parole Caseload	Annual Growth
<i>2010*</i>	8535	-5.3%
<i>2011*</i>	8181	-4.1%
2012	8483	3.7%
2013	7949	-6.3%
2014	7680	-3.4%
2015	7448	-3.0%
2016	7218	-3.1%
2017	7055	-2.3%

* Actual data. Source: Colorado Department of Corrections Monthly Population and Capacity Reports, available at: <http://www.doc.state.co.us/statistical-reports-and-bulletins>

Figure 3: Actual End-of-Fiscal Year Domestic Parole Caseload FY 2010 – FY 2011, December 2010 DCJ Parole Caseload Projection and Summer 2011 Interim Parole Caseload Projections through FY 2017



Sources: Colorado Department of Corrections Monthly Population and Capacity Reports, available at: <http://www.doc.state.co.us/statistical-reports-and-bulletins>; Harrison, Linda (2010). *December 2010 Correctional Population Forecasts*. Colorado Division of Criminal Justice, Denver, Colorado. Available at: <http://dcj.state.co.us/ors/ppp.htm>

DCJ Summer 2011 Interim Juvenile Commitment and Parole Caseload Projections

The December 2010 juvenile commitment and parole population projections differed less than half a percentage point from the actual year-to-date (YTD) average daily population (ADP) and from the actual average daily parole caseload (ADC) at the end of FY 2011. However, the end-of month (EOM) ADP estimates made in December 2010 differed from the actual EOM ADP during the last half of FY 2011, increasing to a 4.1% variance from the actual figure by June 2011. Therefore, the EOM figures were adjusted based on the actual figures observed over the past year, which in turn affects the calculation of the YTD forecast.

As shown in Tables 4 and 5, a very slight adjustment was made to the FY 2012 commitment and parole population projections. However, the declines forecast in the following years have been adjusted significantly upwards (see Figure 4). This modification to the projection is based on several factors:

- The overall decline in the EOM ADP observed over the past year has flattened, and the EOM ADP actually rose in the three months between March 2011 and May 2011.
- The decline in juvenile delinquency filings slowed to an estimated 3%, compared to the 14.8% drop observed in FY 2010.
- However, new commitments dropped by 13.2% over FY 2011, far exceeding the 2.2% decline observed in FY 2010.

Based upon the upward adjustment of the commitment population projection, the parole ADC projection was adjusted upward as well. A 15.7 percent drop in this population is expected between the end of FY 2011 and FY 2015. This adjusted parole ADC projection is displayed in Table 5.

Table 4. DCJ Summer 2011 Interim Juvenile Commitment Quarterly Year-To-Date (YTD) Average Daily Population (ADP) Projections

FY	Quarter	YTD ADP	Quarterly Growth
2010	June*	1171.6	1.4%
	September*	1070.5	-8.6%
	December*	1054.6	-1.5%
	March*	1042.5	-1.1%
2011	June*	1040.4	-0.4%
	September	1019.6	-2.0%
	December	1013.8	-0.6%
	March	1011.1	-0.3%
2012	June	1010.6	0.0%
	September	982.2	-2.8%
	December	973.6	-0.9%
	March	965.5	-0.8%
2013	June	960.0	-0.6%
	September	898.5	-6.4%
	December	889.4	-1.0%
	March	885.0	-0.5%
2014	June	883.5	-0.2%
	September	854.3	-3.3%
	December	847.3	-0.8%
	March	839.3	-0.9%
2015	June	837.1	-0.3%
	September	1099.1	0.65%
	December	1090.2	-0.80%
	March	1103.0	1.18%
	June	1115.4	1.12%

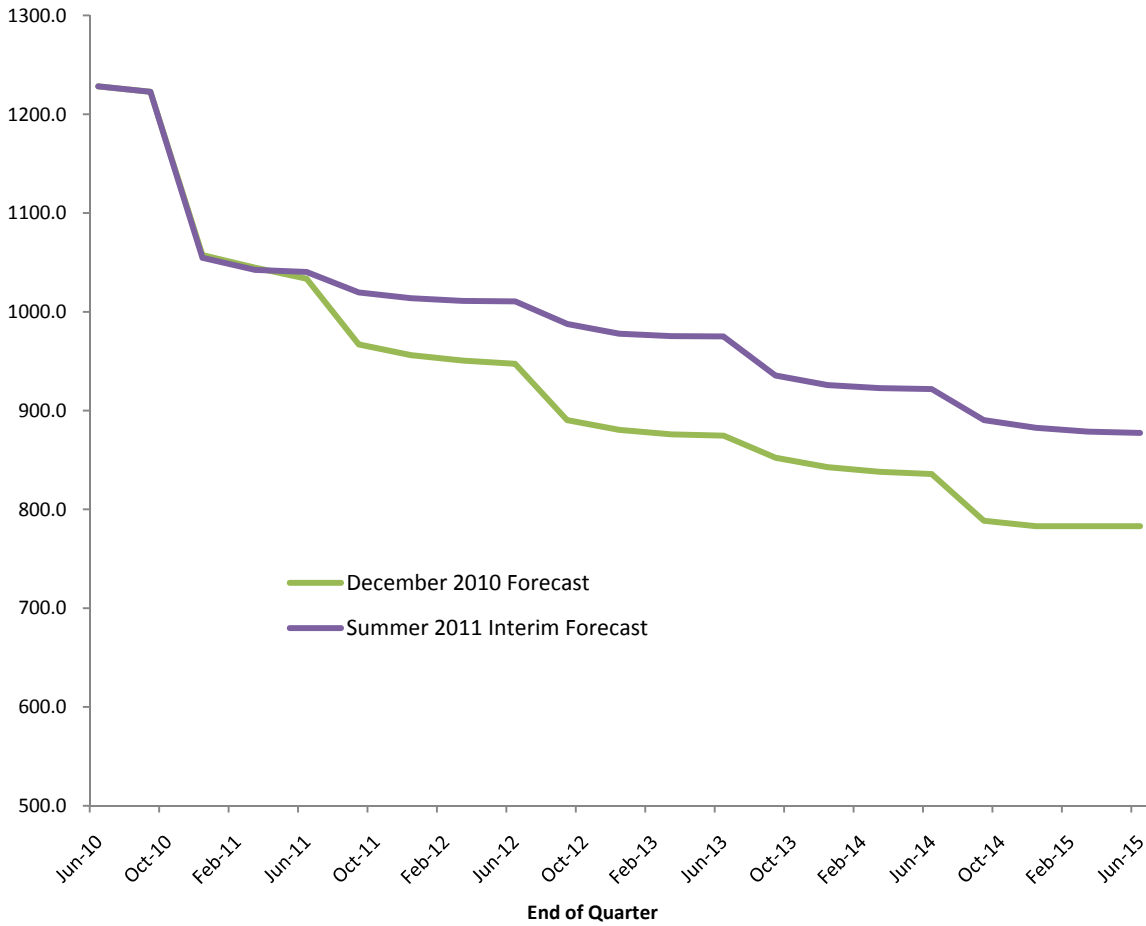
* Actual Data. Source: CDHS DYC Monthly Population Reports. Available at: <http://www.cdhs.state.co.us/dyc/Research.htm>

Table 5. DCJ Summer 2011 Interim Annual Juvenile Year-To-Date (YTD) Average Daily Population (ADP) and Average Daily Caseload (ADC) Projections.

FY	Annual Commitment Projections		Annual Parole Projections	
	ADP	Growth	ADC	Growth
2010*	1171.6	4.8%	446.9	2.7%
2011*	1040.4	-11.2%	418.4	-6.4%
2012	1010.6	-2.9%	406.3	-2.9%
2013	960.0	-5.0%	385.9	-5.0%
2014	883.5	-8.0%	355.2	-8.0%
2015	837.1	-5.3%	336.5	-5.3%

* Actual Data. Source: CDHS DYC Monthly Population Reports. Available at: <http://www.cdhs.state.co.us/dyc/Research.htm>

Figure 4. DCJ December 2010 Quarterly Juvenile Commitment Year-to-Date (YTD) Average Daily Population (ADP) Forecast and DCJ Summer 2011 Interim Forecast.



Sources: CDHS DYC Monthly Population Reports. Available at: <http://www.cdhs.state.co.us/dyc/Research.htm>; Harrison, Linda (2010). *December 2010 Correctional Population Forecasts*. Colorado Division of Criminal Justice, Denver, Colorado. Available at: <http://dcj.state.co.us/ors/ppp.htm>