

**Colorado Division of Criminal Justice**

# **Summer 2008 Interim Adult Prison and Parole Population Projections**

**Pursuant to 24-33.5-503 (m), C.R.S.**

**September 2008**

Linda Harrison

Kim English

**Office of Research and Statistics**

Kim English, Research Director

**Division of Criminal Justice**

Jeanne M. Smith, Director

**Colorado Department of Public Safety**

Peter A. Weir, Executive Director

700 Kipling Street, Suite 1000

Denver, Colorado 80215

Telephone: (303) 239-4442

Fax Number: (303) 239-4491

<http://dcj.state.co.us/ors>

**The Colorado Division of Criminal Justice  
Summer 2008 Interim Prison Population Projections**

In its December 2007 prison population projections forecast, the Colorado Division of Criminal Justice (DCJ) forecast that the Colorado adult prison population would grow by 5.0 percent in fiscal year (FY) 2008, and by 30.7 percent between June 2007 and June 2014. The female inmate population was projected to grow 4.3 percent over FY 2008, and by 79.5 percent by June 2014. Based upon actual prison population statistics for the end of FY 2008, these estimates have been significantly reduced.

**Overall Inmate Population**

In December 2007, the DCJ projections indicated that the prison population would reach 23,456 by June 30, 2008 (see Table 1). This projection exceeded the actual fiscal year-end population of 22,989 by 2.0 percent.

**Table 1. December 2007 DCJ Prison Population Projection Accuracy: Year One**

End of Month	Actual Population			Projected Population			% Error		
	Total	Male	Female	Total	Male	Female	Total	Male	Female
June,2007	22519	20178	2341						
September,2007	22586	20258	2328						
December,2007	22735	20377	2358	22806	20442	2364	0.31%	0.32%	0.25%
March, 2008	22993	20638	2355	23047	20646	2401	0.23%	0.04%	1.95%
June,2008	22989	20684	2305	23456	21014	2442	2.03%	1.60%	5.94%

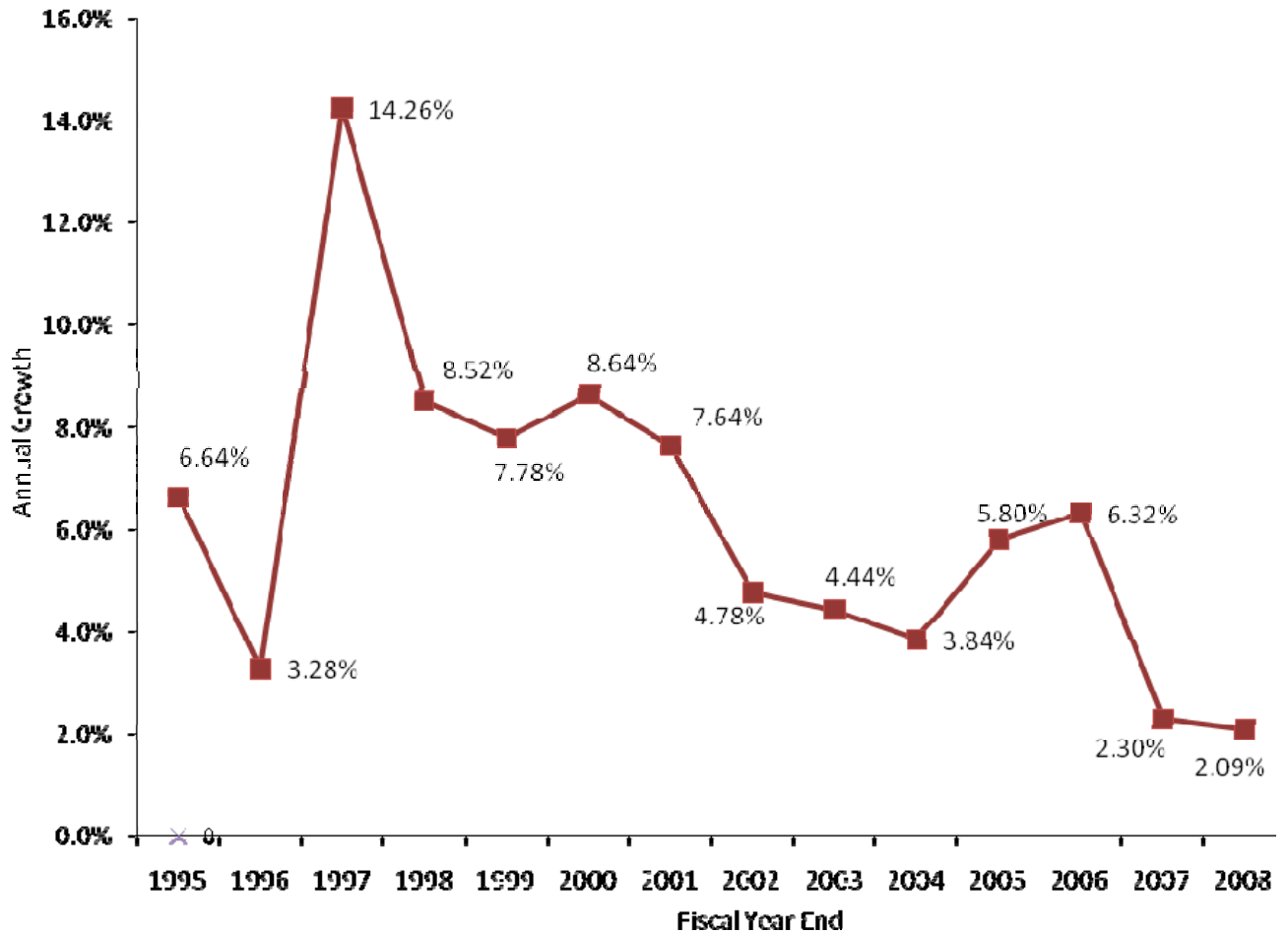
Sources: Colorado Department of Corrections Monthly Population and Capacity Reports, available at: [https://exdoc.state.co.us/secure/combo2.0.0/ajax/ajax\\_frontend.php?id=5027](https://exdoc.state.co.us/secure/combo2.0.0/ajax/ajax_frontend.php?id=5027)  
 Harrison, Linda (2007). *Population Projections for Adult Prison and Parole, Community Corrections, and Juvenile Commitment and Parole*. Colorado Division of Criminal Justice, Denver, Colorado. Available at <http://dcj.state.co.us/ors/pdf/PPP/Final%20Final%20PPP%202007.pdf>

The overall prison population grew by only 2.1 percent during FY 2008, and by 2.3 percent the prior year. Both of these figures represent the lowest annual growth rates observed since prior to 1995. Figure 1 displays the annual rates of growth in the prison population since 1995. This decline in the rate of growth appears to have begun mid-year of FY 2007, and has continued since. One observable factor in this decline is a narrowing of the differential between admissions and releases, as shown in Figure 2. Releases have increased over the last two fiscal years, while the rate of growth in admissions has stabilized over the last two years after a period of increase.

The increase in releases is particularly notable in releases to parole, as shown in Figure 3. Changes in admission patterns cannot be determined without more detailed information regarding monthly prison admissions.

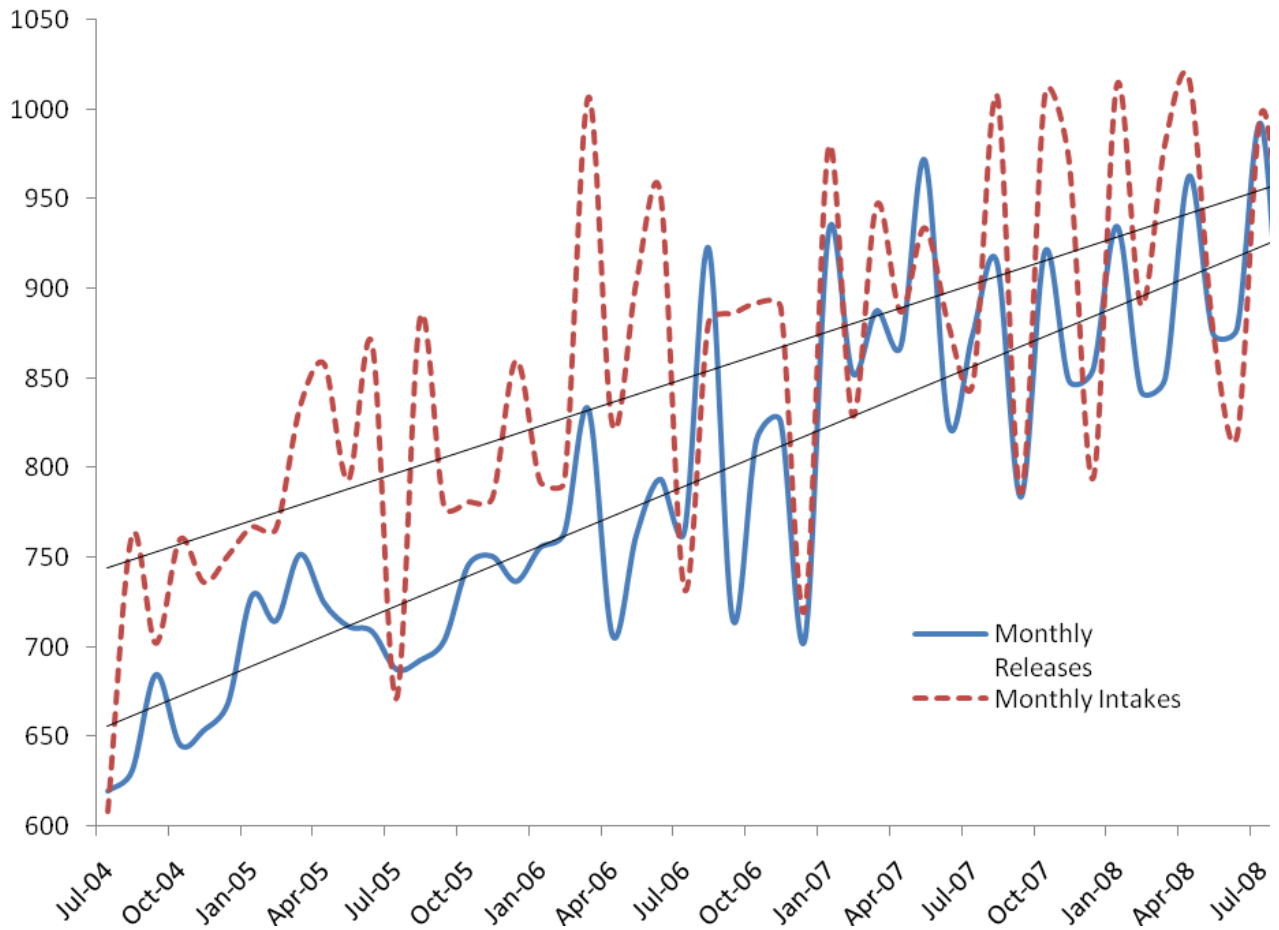
Based upon the current prison population numbers, the DCJ December 2007 prison population projections have been adjusted downward for the DCJ Summer 2008 interim projections which are displayed below in Table 2. These projections show an overall inmate population increase of 21.7 percent between FY 2008 and FY 2014. Figure 4 displays the original December 2007 projections, the actual growth through FY 2008, and the recalibrated interim figures.

**Figure 1. Colorado Prison Population Annual Growth Rates FY 1995 - FY 2008**



Source: Colorado Department of Corrections Monthly Population and Capacity Reports, available at: [https://exdoc.state.co.us/secure/combo2.0.0/ajax/ajax\\_frontend.php?id=5027](https://exdoc.state.co.us/secure/combo2.0.0/ajax/ajax_frontend.php?id=5027)

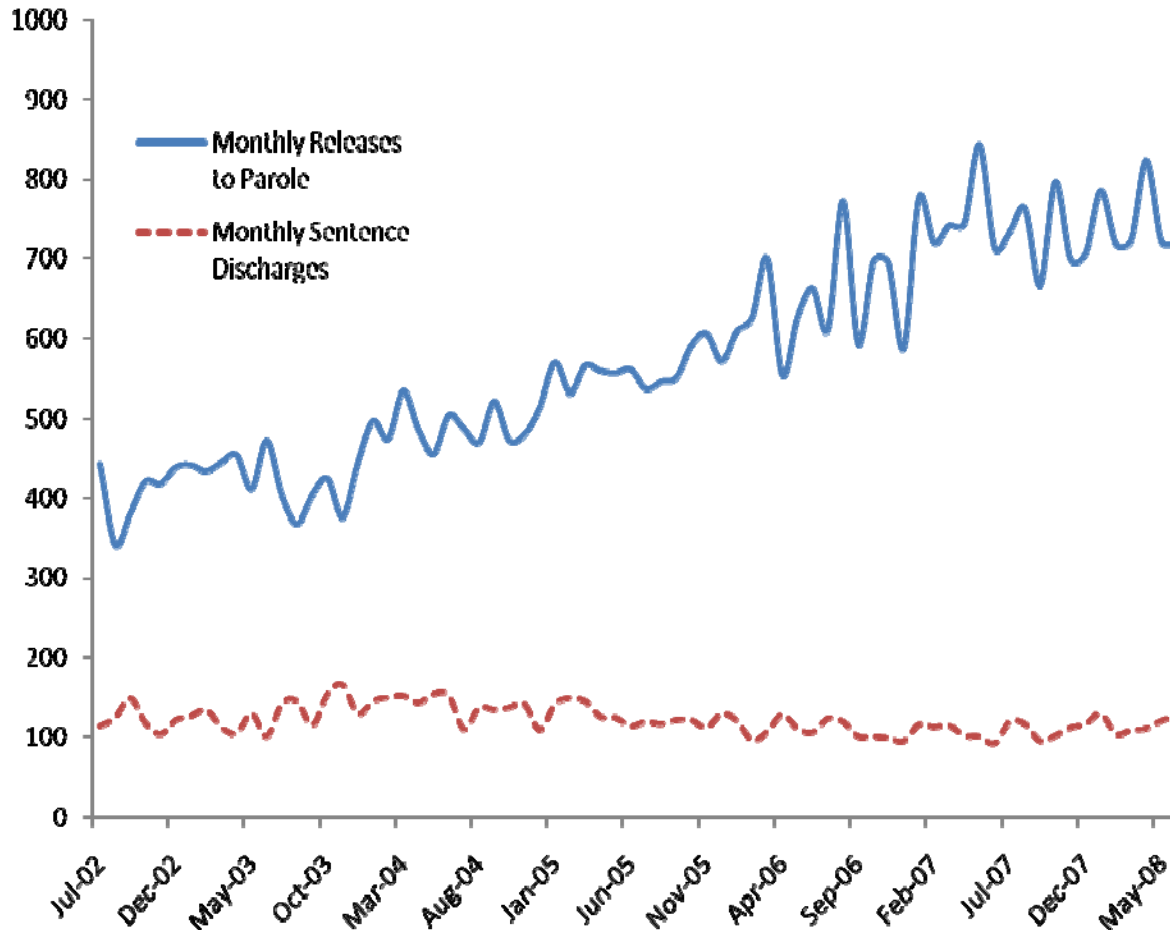
**Figure 2. Prison Admissions and Releases FY 2005 - FY 2008**



Source: Colorado Department of Corrections Monthly Population and Capacity Reports, available at: [https://exdoc.state.co.us/secure/combo2.0.0/ajax/ajax\\_frontend.php?id=5027](https://exdoc.state.co.us/secure/combo2.0.0/ajax/ajax_frontend.php?id=5027)

\* Detailed admission data are not available. Admissions are estimated based on prison release numbers and population change.

**Figure 3. Monthly Prison Releases by Discharge Type FY 2003 - FY 2008**



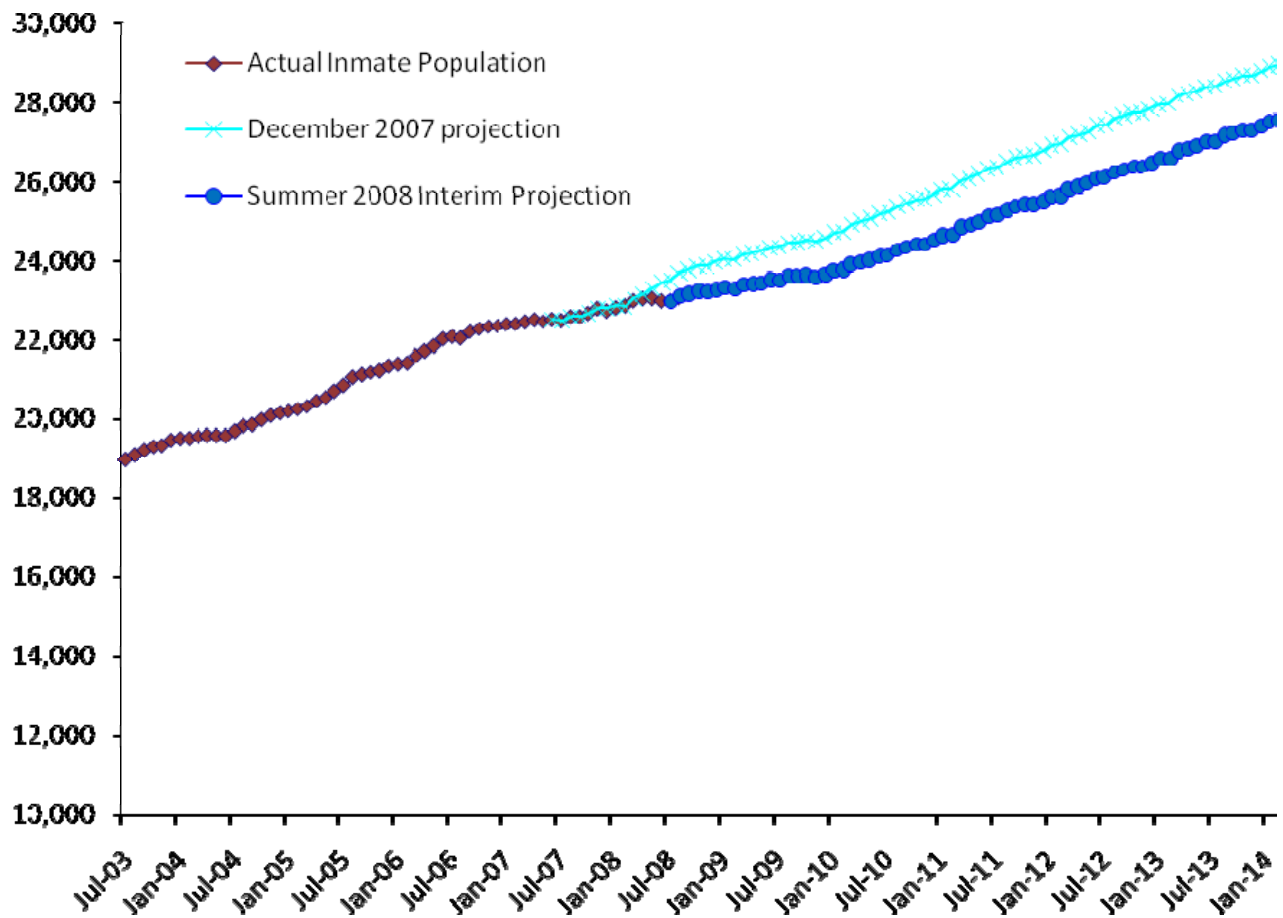
Source: Colorado Department of Corrections Monthly Population and Capacity Reports, available at: [https://exdoc.state.co.us/secure/combo2.0.0/ajax/ajax\\_frontend.php?id=5027](https://exdoc.state.co.us/secure/combo2.0.0/ajax/ajax_frontend.php?id=5027)

**Table 2. DCJ Summer 2008 Interim Quarterly Adult Prison Population Projections, Total and by Gender**

FY	End of month:	Total Population	Quarterly Growth	Male Total Population	Quarterly Growth	Female Total Population	Quarterly Growth
2007	June*	22519	1.95%	20178	1.83%	2341	3.06%
	September*	22586	0.30%	20258	0.40%	2328	-0.56%
	December*	22735	0.66%	20377	0.59%	2358	1.29%
2008	March*	22993	1.14%	20638	1.28%	2355	-0.13%
	June*	22989	-0.02%	20684	0.22%	2305	-2.12%
	September	23089	0.43%	20775	0.44%	2314	0.39%
	December	23289	0.87%	20974	0.96%	2315	0.04%
2009	March	23417	0.55%	21091	0.56%	2326	0.48%
	June	23530	0.48%	21177	0.41%	2353	1.16%
	September	23627	0.41%	21247	0.33%	2380	1.15%
	December	23661	0.14%	21251	0.02%	2410	1.26%
2010	March	23914	1.07%	21481	1.08%	2433	0.95%
	June	24133	0.91%	21643	0.75%	2490	2.34%
	September	24360	0.94%	21846	0.94%	2514	0.96%
	December	24544	0.76%	22030	0.84%	2514	0.00%
2011	March	24865	1.31%	22330	1.36%	2535	0.84%
	June	25126	1.05%	22549	0.98%	2577	1.66%
	September	25385	1.03%	22787	1.06%	2598	0.81%
	December	25502	0.46%	22901	0.50%	2601	0.12%
2012	March	25823	1.26%	23223	1.41%	2600	-0.04%
	June	26096	1.06%	23455	1.00%	2641	1.58%
	September	26330	0.90%	23658	0.87%	2672	1.17%
	December	26488	0.60%	23807	0.63%	2681	0.34%
2013	March	26796	1.16%	24097	1.22%	2699	0.67%
	June	27039	0.91%	24293	0.81%	2746	1.74%
	September	27253	0.79%	24486	0.79%	2767	0.76%
	December	27410	0.58%	24645	0.65%	2765	-0.07%
2014	March	27719	1.13%	24953	1.25%	2766	0.04%
	June	27974	0.92%	25168	0.86%	2806	1.45%

\* Actual data provided by Colorado Department of Corrections Monthly Population and Capacity Reports, available at: [https://exdoc.state.co.us/secure/combo2.0.0/ajax/ajax\\_frontend.php?id=5027](https://exdoc.state.co.us/secure/combo2.0.0/ajax/ajax_frontend.php?id=5027)

**Figure 4. Actual Monthly Inmate Population FY 2004 – FY 2008, December 2007 DCJ Projected Population and Summer 2008 Interim Projections through FY 2014**



Sources: Colorado Department of Corrections Monthly Population and Capacity Reports, available at: [https://exdoc.state.co.us/secure/combo2.0.0/ajax/ajax\\_frontend.php?id=5027](https://exdoc.state.co.us/secure/combo2.0.0/ajax/ajax_frontend.php?id=5027); Harrison, Linda (2007). *Population Projections for Adult Prison and Parole, Community Corrections, and Juvenile Commitment and Parole*. Colorado Division of Criminal Justice, Denver, Colorado. Available at <http://dcj.state.co.us/ors/pdf/PPP/Final%20Final%20PPP%202007.pdf>

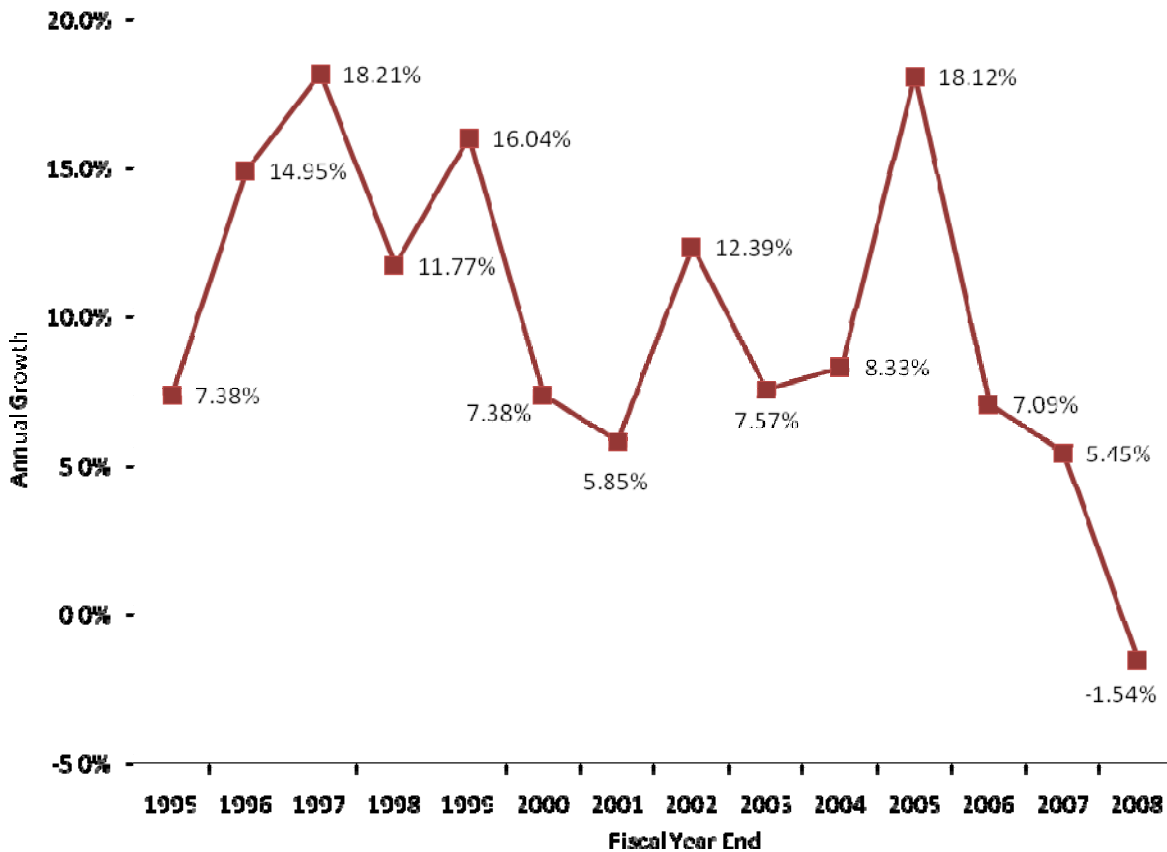
### Female Inmate Population

In December 2007, the DCJ projections forecast that the female inmate population would reach 2,442 by June 30, 2008, an increase of 4.3 percent over the course of FY 2008. Though the projected growth for FY 2008 was lower than the growth actually realized over the prior 13 years, the actual growth for the year proved to be even lower. The female prison population actually fell by 1.5 percent, the first decline observed in this population since 1991. Figure 5 displays this pattern of growth in the female prison population. The actual year-end population exceeded the original December 2007 projections population by 5.9 percent (see Table 1).

Growth in the female inmate population was expected to increase, partially due to the projected growth in the female state population overall. This population is expected to

increase through 2009, particularly the 16 to 29 year old population. This growth is expected to continue in the following years, though at a slower rate. Additionally, though felony court filings of both males and females declined, female probation admits increased in fiscal years 2006 and 2007. Conversely, male probation admits declined in 2007.<sup>1</sup> These factors indicated an increase in the rate of female prison admissions.

**Figure 5. Colorado Female Prison Population Annual Growth Rates FY 1995 - FY 2008**



Colorado Department of Corrections Monthly Population and Capacity Reports, available at: [https://exdoc.state.co.us/secure/combo2.0.0/ajax/ajax\\_frontend.php?id=5027](https://exdoc.state.co.us/secure/combo2.0.0/ajax/ajax_frontend.php?id=5027)

Female prison admissions grew at a faster rate than did releases throughout FY 2006, continuing to mid-FY 2007. Estimated admissions<sup>2</sup> from July 2007 thru November 2007 demonstrated a significant upward trend, which provided an additional basis for the assumption that the female population would continue to grow. However, this trend appears to have reversed over the remainder of FY 2008. From January 2007 through FY 2008, both releases and admissions began to decline. In this case, however, admissions fell at a faster rate than did releases.

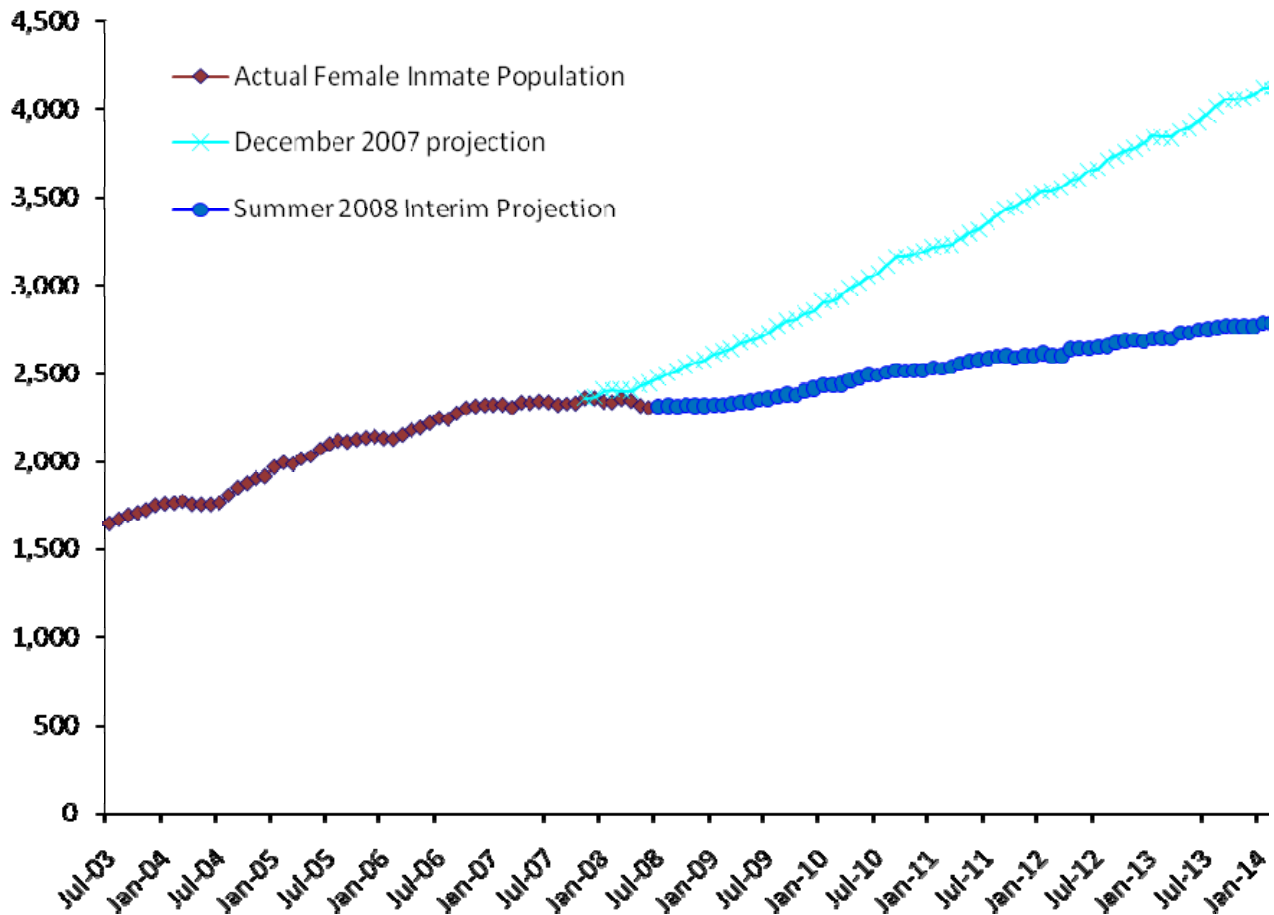
<sup>1</sup> Source: Colorado Judicial Branch Annual Statistical Reports. Available at: <http://www.courts.state.co.us/panda/statrep/pandaannualsindex.htm>

<sup>2</sup> Detailed admissions data are not available. Admissions are estimated based on prison release numbers and population change.



Based upon these more recent trends in admissions and releases, and upon the actual female prison population size at the end of FY 2008, the DCJ projections for this population have been adjusted considerably downward. Figure 6 displays the actual growth in the female population through FY 2008, the original DCJ December 2007 projections, and the reduced Summer 2008 interim projections. Table 2 above contains the adjusted population figures for each quarter through FY 2014. The female inmate population is expected to increase 21.7 percent between FY 2008 and FY 2014.<sup>3</sup>

**Figure 6: Actual Monthly Female Inmate Population FY 2004 – FY 2008, December 2007 DCJ Projected Female Population and Summer 2008 Interim Female Population Projections through FY 2014**



Sources: Colorado Department of Corrections Monthly Population and Capacity Reports, available at: [https://exdoc.state.co.us/secure/combo2.0.0/ajax/ajax\\_frontend.php?id=5027](https://exdoc.state.co.us/secure/combo2.0.0/ajax/ajax_frontend.php?id=5027); Harrison, Linda (2007). *Population Projections for Adult Prison and Parole, Community Corrections, and Juvenile Commitment and Parole*. Colorado Division of Criminal Justice, Denver, Colorado. Available at <http://dcj.state.co.us/ors/pdf/PPP/Final%20Final%20PPP%202007.pdf>

<sup>3</sup> As the male population projections simply reflect the total projected population, they will not be elaborated upon in this update.

### Parole Caseload Projections

The DCJ December 2007 parole population projections were less than a percentage point lower than the actual parole caseload at year-end FY 2008, at 0.81%.

This differential, though slight, along with the increasing numbers of releases to parole, prompted an upward adjustment of the parole caseload projections. The DCJ Summer 2008 interim parole caseload projections are displayed in Table 3, along with adjusted estimates of the out of state and absconder parole populations.

The parole caseload grew by 10.5 percent in FY 2008, and is predicted to increase 21.2 percent through the following fiscal year (from 8,783 to 10,648). By the end of FY 2014, the caseload is expected to reach 13,815, a 57.3 percent increase over the FY 2008 figure.

**Table 3. DCJ Summer 2008 Interim Parole Caseload Projections**

	Parole Caseload	Annual Growth	Out of State Parole Caseload	Annual Growth	Parole Absconders	Annual Growth
2007*	7947	21.31%	1815	8.75%	781	25.56%
2008*	8783	10.52%	1955	7.72%	773	-0.99%
2009	10648	21.24%	2061	5.42%	855	10.52%
2010	12029	12.96%	2150	4.32%	940	9.96%
2011	12323	2.45%	2190	1.86%	1029	9.45%
2012	12801	3.88%	2260	3.16%	1121	9.00%
2013	13364	4.40%	2339	3.53%	1217	8.59%
2014	13815	3.37%	2397	2.46%	1318	8.22%

\* Actual data

Source: Colorado Department of Corrections Monthly Population and Capacity Reports, available at: [https://exdoc.state.co.us/secure/combo2.0.0/ajax/ajax\\_frontend.php?id=5027](https://exdoc.state.co.us/secure/combo2.0.0/ajax/ajax_frontend.php?id=5027);