

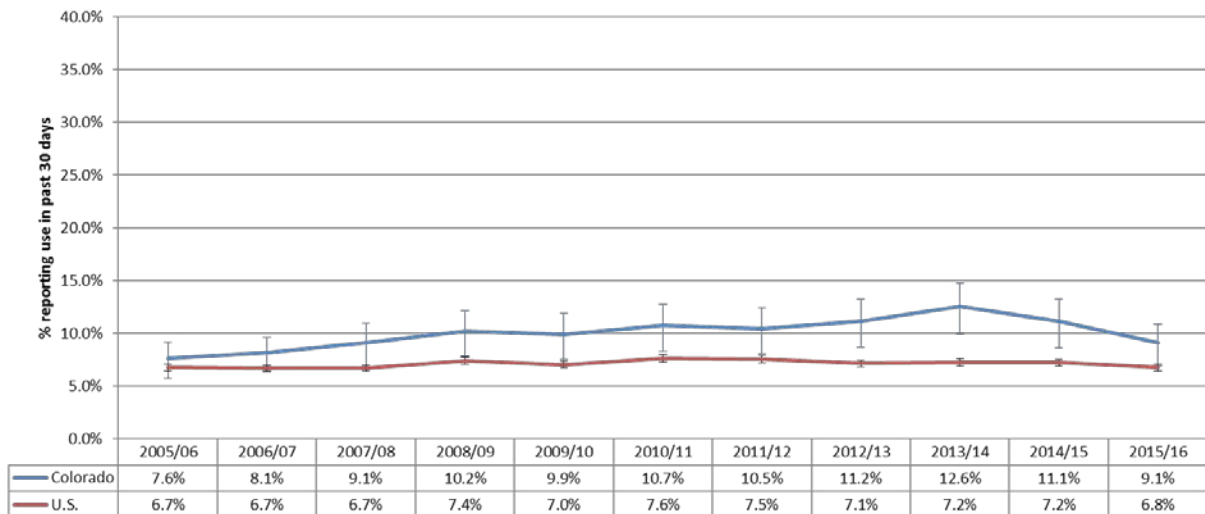
Summary of National Survey on Drug Use and Health Survey Results – 2005/2006 to 2015/2016

The National Survey on Drug Use and Health (NSDUH) is an annual survey conducted by the U.S. Substance Abuse and Mental Health Services Administration (SAMHSA). State-level estimates are based on two years of data to ensure estimates from small sample sizes are reliable

Data in the figures below represent reported past 30-day marijuana use over ten years by three age groups, 12-17, 18-25, and 26 and older. These age groupings are determined by SAMHSA. The following is a brief summary of recent trends

- 1) Youth marijuana use is near the same level it was 10 years ago, according to both key surveys of youth substance use in Colorado (Healthy Kids Colorado Survey [data not shown] and National Survey on Drug Use and Health).
- 2) Past 30-day use by Colorado youth (12-17 years old) decreased two percentage points from 2014/15 to 2015/16, going from 11.1% to 9.1% (-18%). This is a statistically significant decrease.
- 3) Past 30-day use by Colorado young adults (18-25 years old) increased 0.4 percentage points from 2014/15 to 2015/16, going from 31.8% to 32.2% (+1%). This is not a statistically significant increase.
- 4) Past 30-day use by Colorado adults (26 years and older) decreased by 0.7 percentage points from 2014/15 to 2015/16, going from 14.7% to 14.0% (-5%). This is not a statistically significant decrease.
- 5) When compared to other states, Colorado's youth rank 7th in 2015/16 compared to 1st in 2014/15; Colorado's young adults rank 3rd in 2015-16 compared to 1st in 2014/15; Colorado's adults rank 3rd in 2015/16 compared to 1st in 2014/15.

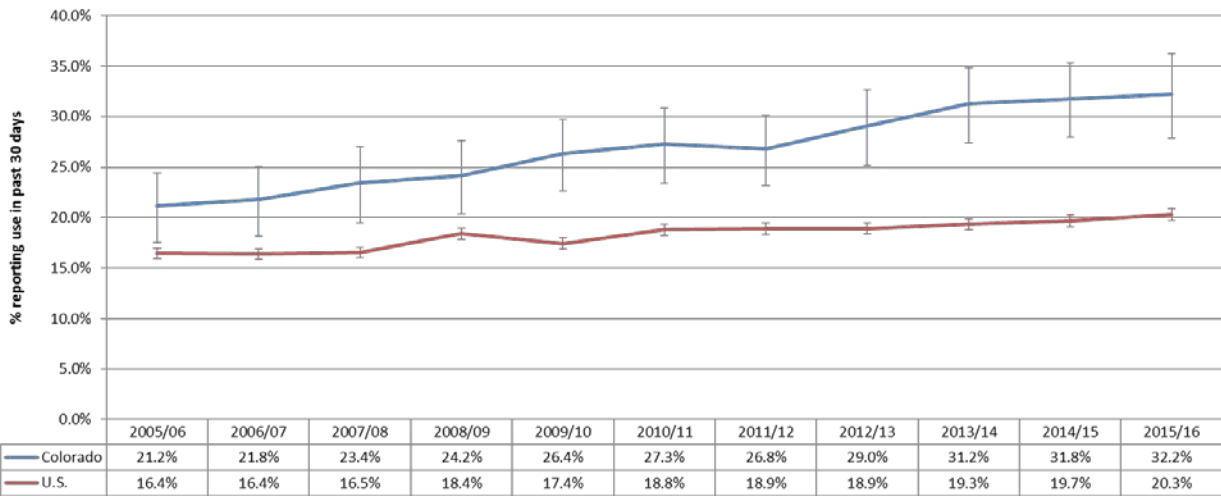
NSDUH: Past 30-day marijuana use, 12-17 years old, 2005/06-2015/16



Source: Substance Abuse and Mental Health Services Administration, National Survey on Drug Use and Health (2017).

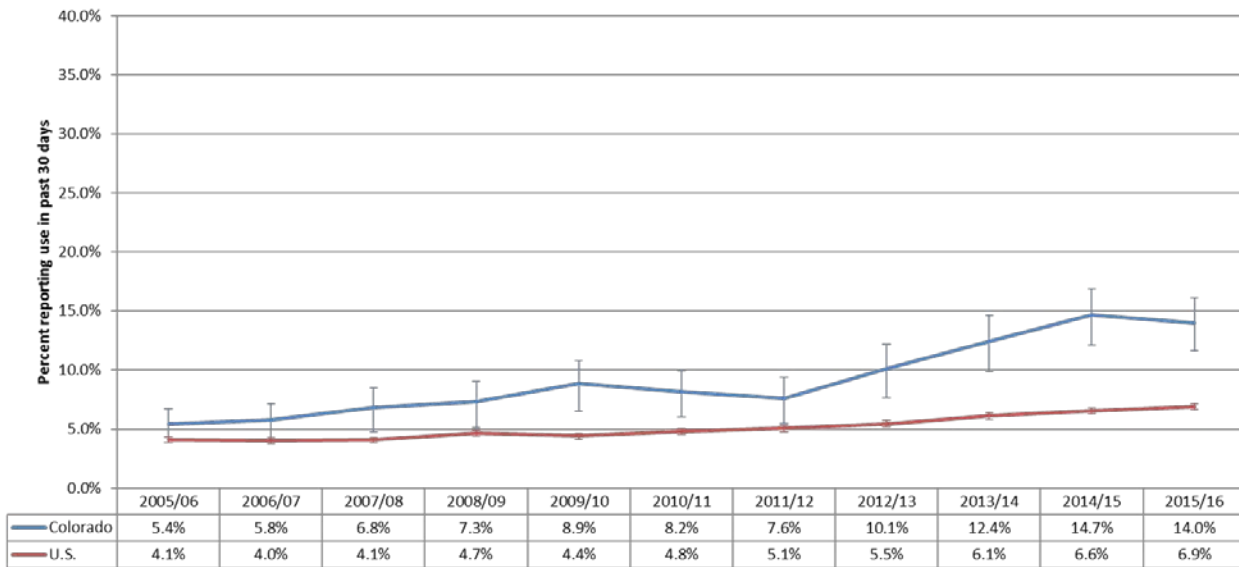


NSDUH: Past 30-day marijuana use, 18-25 years old, 2005/06-2015/16



Source: Substance Abuse and Mental Health Services Administration, National Survey on Drug Use and Health (2017).

NSDUH: Past 30-day marijuana use, 26 years and older, 2005/06-2015/16



Source: Substance Abuse and Mental Health Services Administration, National Survey on Drug Use and Health (2017).

