



# CO-WIMS

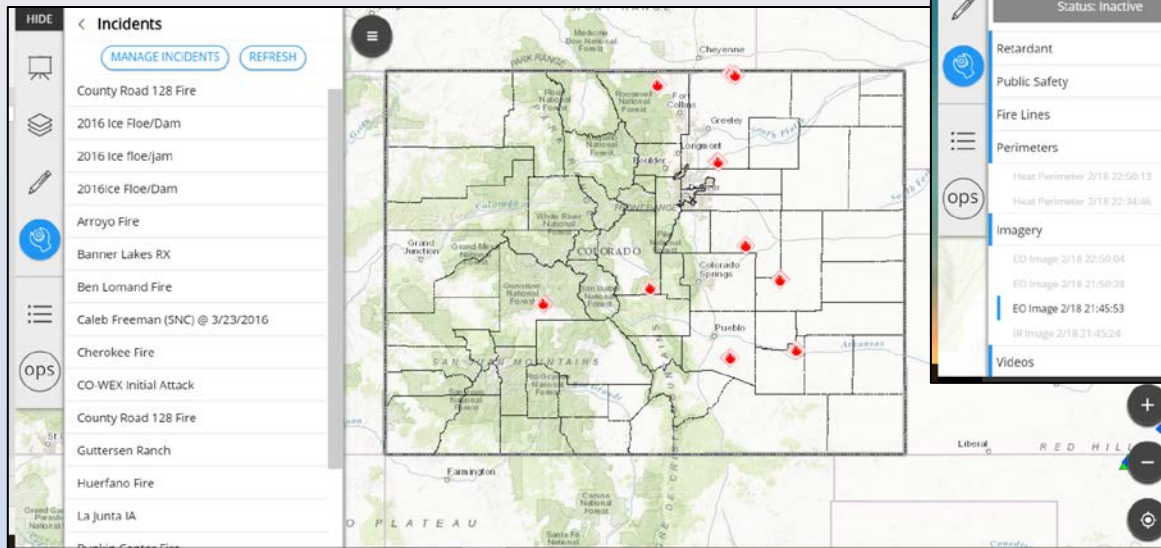
Colorado Wildfire Information Management System

# Why Should I Care About CO-WIMS?



- CO-WIMS brings you

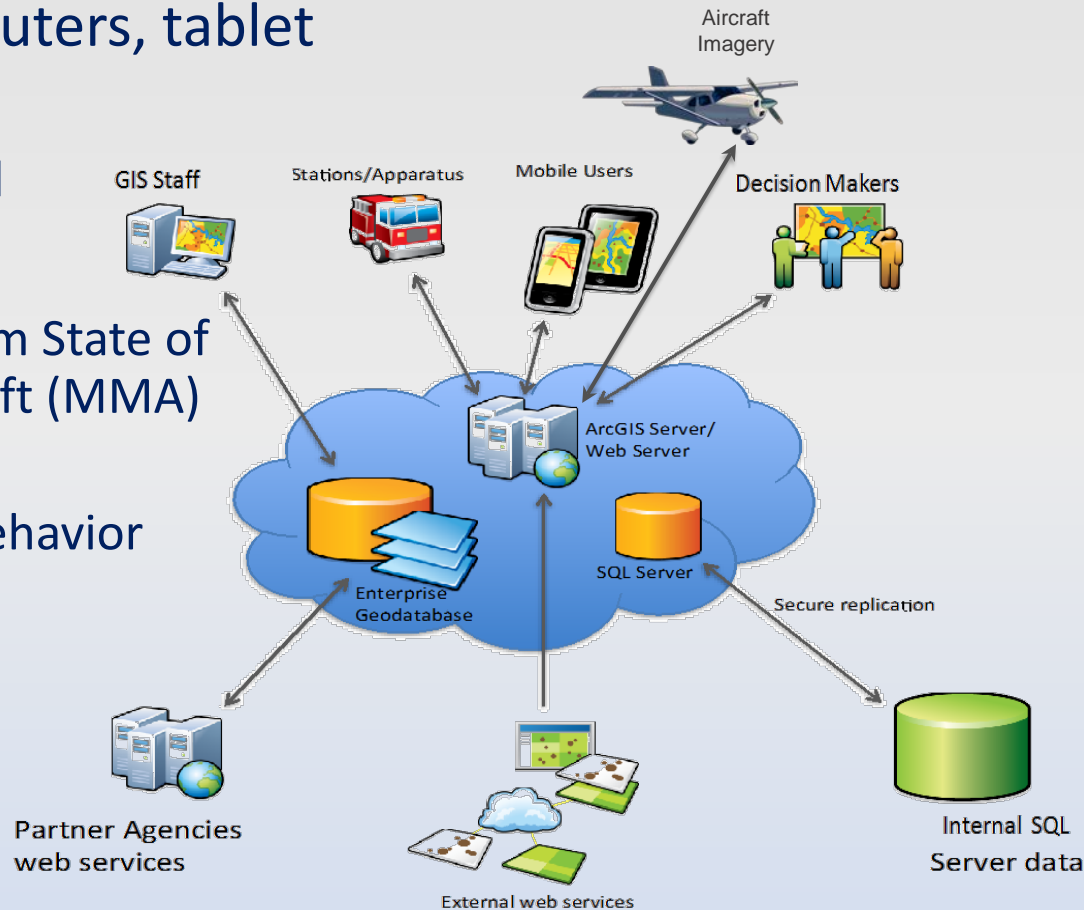
- An up-to-date picture of the wildfire situation across the state (and beyond, actually – across the US)
- Maps, and imagery from MMA aircraft of wildfire incidents in Colorado



# What is CO-WIMS?

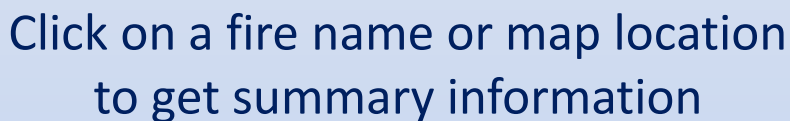
## A multi-device decision-support system

- On desktop and laptop computers, tablet devices, and smart phones
  - Web-based, iOS, and Android
- Access to:
  - Near real-time aircraft intel from State of Colorado's Multi-Mission Aircraft (MMA)
  - National fire and resource info
  - Weather, fuels, potential fire behavior
  - Colorado Data and Resources
- Mapping & Reporting
  - Create and track incidents
  - Map incidents
  - Map special risks





## Zoom to Nation, GACC or Colorado



# Briefing Mode: Regional and State



Switch to tactical views for detailed incident information

The screenshot displays the Colorado Division of Fire Prevention & Control interface. On the left, a sidebar contains a "HIDE" button, a "NAME" dropdown, a "SHOW ALL INFO" button, and a list of incidents. A red arrow points to the "ops" button in the sidebar. The main area shows a map of Colorado with several red dots indicating incident locations. A callout box labeled "BANNER LAKES RX (MAPPED)" is visible on the map. The right sidebar shows a list of locations: Nation, Rocky Mountain, and Colorado.

**Incident List:**

- COUNTY ROAD 128 FIRE (MAPPED)
- 2016 ICE FLOE/DAM (MAPPED)
- 2016 ICE FLOE/DAM (MAPPED)
- 2016 ICE FLOE/DAM (MAPPED)
- 2016 ICE FLOE/DAM (MAPPED)
- 2016 ICE FLOE/DAM (MAPPED)
- ARROYO FIRE (MAPPED)
- BANNER LAKES RX (MAPPED)

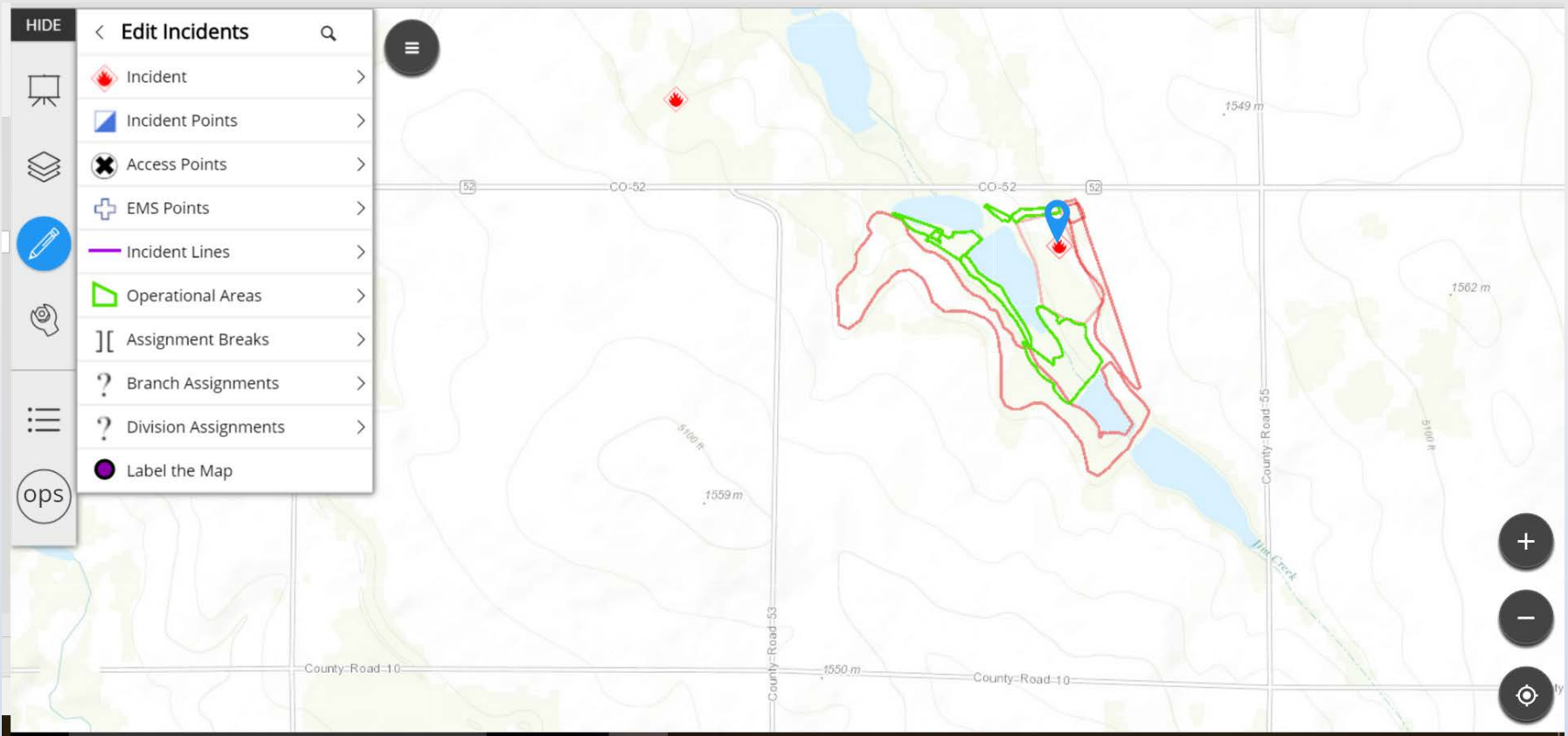
**Legend:**

- > 24 Hour
- Initial Attack
- Other 209
- IMSR

# Tactical Mode: Collaborative Mapping



- Map fire perimeter, structures, critical infrastructure, and damage assessments

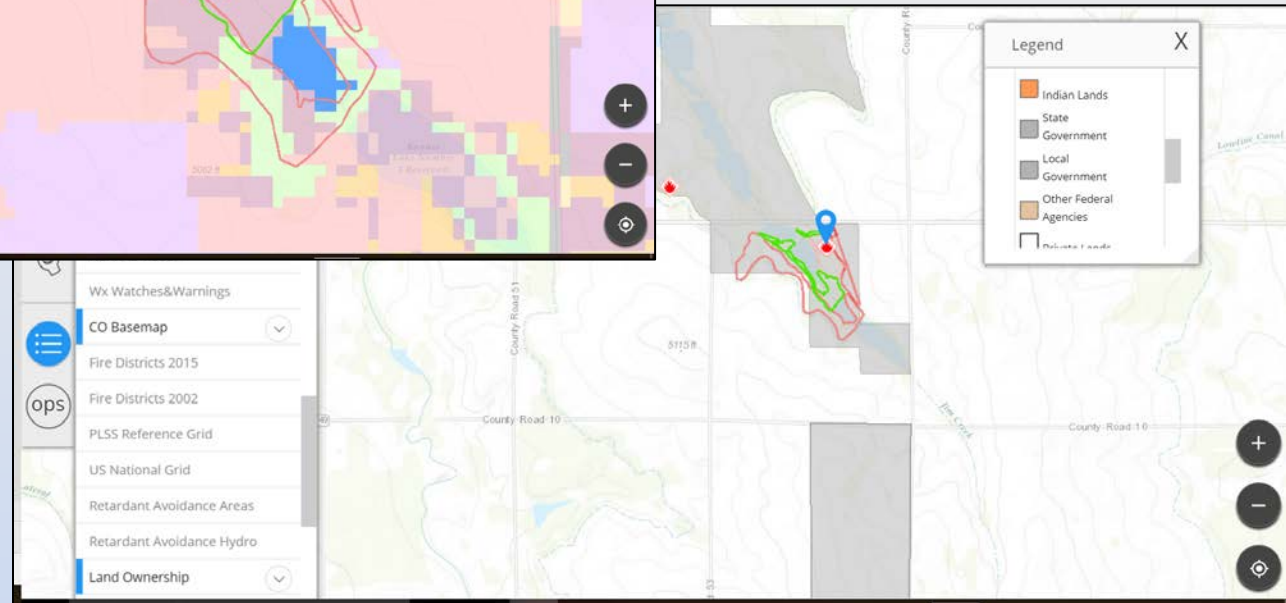




# Data Sources



- Property ownership, values, watersheds, structures, MODIS hot spots, weather, precipitation, CO-WRAP, and many other data layers are available



# Aircraft Intel



- Imagery, video, and key points of intelligence delivered to CO-WIMS (Situation Analyst) in near real-time from the aircraft

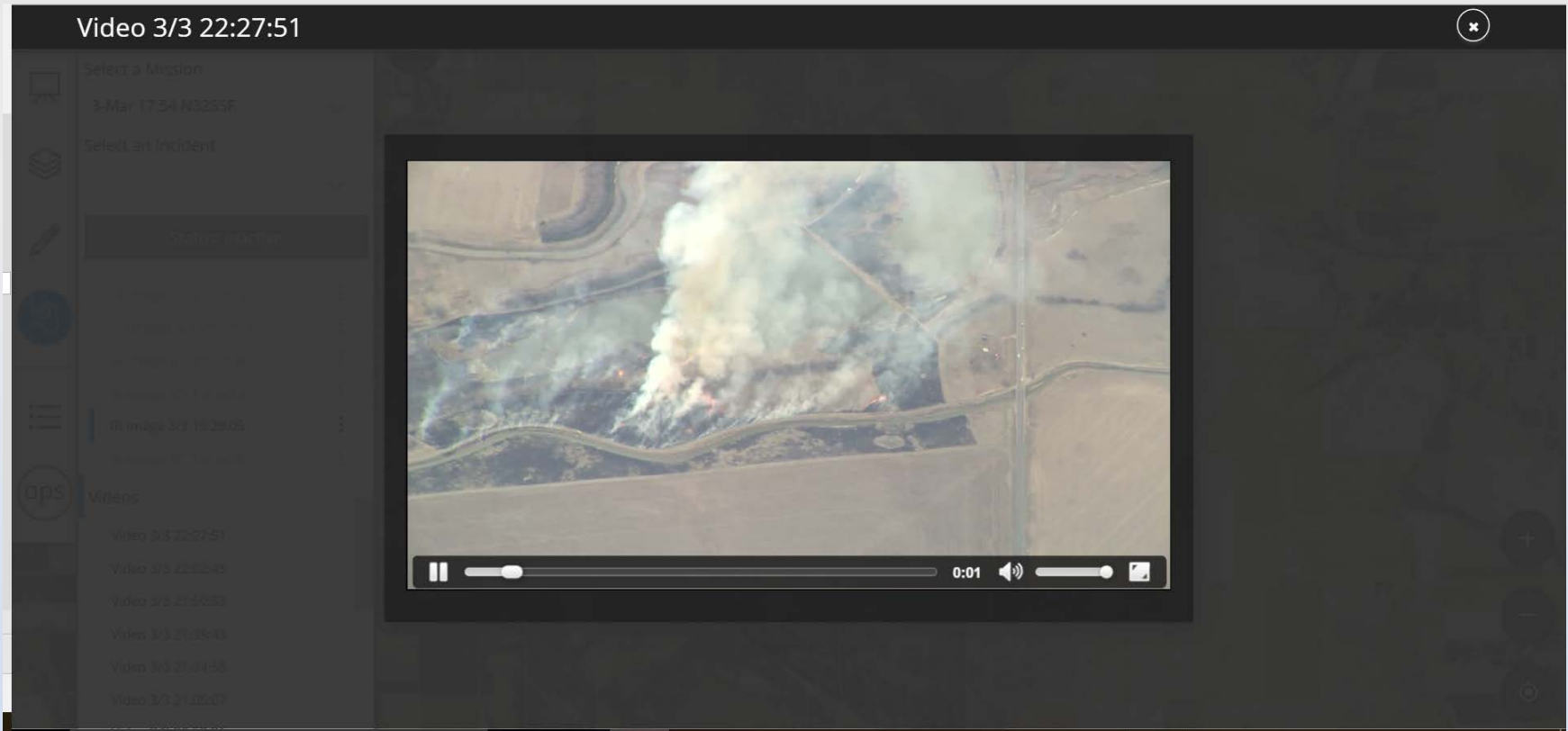




# Aircraft Intel



- Imagery, video, and key points of intelligence delivered to CO-WIMS (Situation Analyst) in near real-time from the aircraft

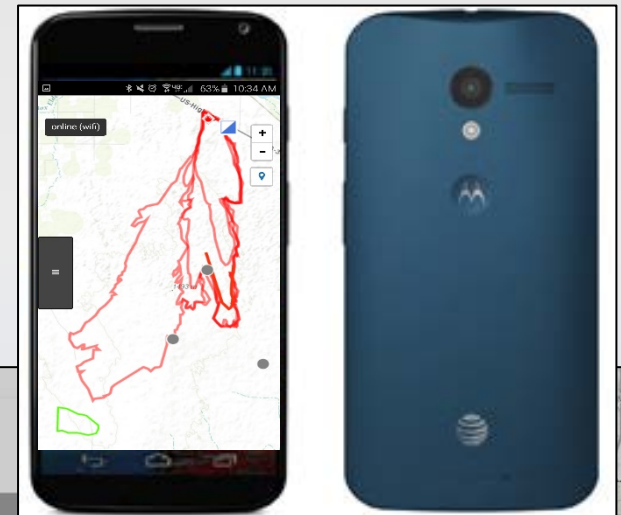


# Resource Tracking and Management



- Tracking of Mobile Resources (SPOT, Delorme, Intterra Mobile App)
- Ability to send resource picture to MMA

Resource Name	Resource Label	Kind	Type	ST or TF Label	Incident	Status	Tracking Type	Distance
Brad Schmidt	Schmidt iPhone				None	Available	InactiveTrackii	25.9
Brad Schmidt	Schmidt Android				None	Available	InactiveTrackii	134.1
CARNG1	CARNG1	HEL			None	Available	InactiveTrackii	24.8
CARNG2	CARNG2	HEL			None	Available	InactiveTrackii	24.8
CARNG3	CARNG3	HEL			None	Available	InactiveTrackii	23.2
CARNG4	CARNG4	HEL			None	Available	InactiveTrackii	24.8
CARNG5	CARNG5	HEL			None	Available	InactiveTrackii	24.8
CARNG6	CARNG6	HEL			None	Available	InactiveTrackii	24.2
CARNG7	CARNG7	HEL			None	Available	InactiveTrackii	24.9



County Road 128 Fire Assignment Report

[SELECT ALL](#)

Resource Identifier	Leader	# Persons	Contact	Other: Req#, Config, Agency, Home, Kind, Type	Assignment (sorted)
Brad Schmidt	Schmidt iPhone				
Brad Schmidt	Schmidt Android				
CARNG1	CARNG1	HEL			
CARNG2	CARNG2	HEL			
CARNG3	CARNG3	HEL			
CARNG4	CARNG4	HEL			
CARNG5	CARNG5	HEL			
CARNG6	CARNG6	HEL			
CARNG7	CARNG7	HEL			

ASSIGNMENT REPORT: County Road 128 Fire [VIEW](#)

# Reporting



- Consolidating all information from CO-WIMS into one output

The screenshot displays the CO-WIMS Active Incident Report interface. On the left, a sidebar shows a map with a blue polygon indicating the incident area. The top of the sidebar has a "HIDE" button and a "Reports" section with a "SELECT AREA" button. Below this, it says "Incident (3)". The main area shows a detailed map of the incident location. On the right, a "CO-WIMS Active Incident Rep" form is displayed, containing various fields for incident information, size, and ground contact data. The form includes buttons for "OPEN IN NEW TAB", "CLOSE", and "Print".

Report Date/Time		3/28/2016, 3:43:50 PM		Incident Last Modified Date/Time	
Incident Information					
Incident Name	Ben Lomand Fire	Jurisdiction/Agency	N/A		
Incident Action #		I/A Dispatch Center			
Geographic Location		Reporting Agency			
County		Planning Region			
Latitude		Ownership			
Longitude		Fire District			
Size (Calculated from CO-WIMS)					
Perimeter	666.3	Control Objective	N/A		
Size-up Intelligence Data (From Size-up Form)					
Values At Risk		Spread Potential			
Character of Fire		Position on Slope			
Aspect		Slope % (average)			
Weather Conditions		Fuel Type			
Est Wind Speed (eye-level)		Date/Time of Edit			
Wind Direction		Name of Editor			
Ground Contact Data					
Incident Commander		Resource Identifier			
Pri. Cmnd. Freq.		Sec. Cmnd. Freq.			
Pri. Tac. Freq.		Sec. Tac. Freq.			
Pri. A/G Freq.		Sec. A/G Freq.			
Primary A/A Freq.					





# Everyone sees this *Common Picture* immediately



# Other Missions

---



- CO-WIMS and the MMA are built with wildfire in mind, but are useful for many missions
  - Natural disaster response – floods, earthquakes, search and rescue efforts
  - Man-made events – chemical spills, border patrol, terrorist attacks, riots, and other public safety incidents
  - Research and development – agricultural tasks, environmental monitoring, and wildlife and habitat survey



# Cost and Getting Access

---



- MMA detection missions are free to local Colorado jurisdictions
- To order the MMA call the State Emergency Operations Line:

**303-279-8855**



**COLORADO**

**Division of Homeland Security  
& Emergency Management**

Department of Public Safety