

Community Corrections in Colorado: Basic Overview & Current Initiatives

Glenn A. Tapia, Director

Office of Community Corrections

Division of Criminal Justice

Colorado Department of Public Safety

Presentation to the Colorado Commission on Criminal and Juvenile Justice

[November 13, 2015]

Presentation Outline

- **Basic Overview of Colorado Community Corrections**
- **Description of Offender Population**
- **Risk/Outcome Trends**
- **“Performance” in Community Corrections**
- **Current Risk Reduction Initiatives/Implementation Projects**

Modern “Halfway Houses” (Colorado Model)

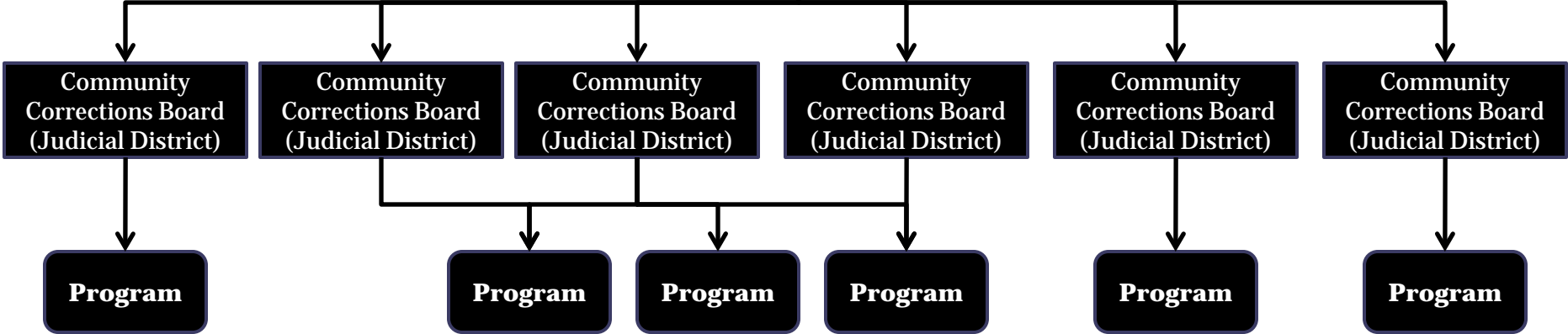
- **Serve several types of offenders under current legal jurisdiction**
 - **Diversion – “halfway in” prison**
 - **Transition – “halfway out” of prison**
 - **Condition of Parole**
 - **Condition of Probation**
- **Regulated and funded by the State of Colorado – Division of Criminal Justice**
- **Co-regulated and funded by local governments via community corrections boards**

Division of Criminal Justice (DCJ) Statutory Responsibilities

- Administer **Funding** to Boards/Program (\$69,000,000 in FY16)
- Establish **State Standards** for Program Performance
- **Audit** for Compliance with **Standards**
- **Training** and **Technical Assistance** to Boards and Programs

Colorado Department of Public Safety (CDPS)

**Division of Criminal Justice (DCJ)
(Office of Community Corrections)**



Colorado Department of Corrections

Colorado Probation Departments

Colorado Division of Behavioral Health

Colorado Community Corrections Boards

- **Colorado model centered on “Local Control”**
- **Local Government Role**
 - **Establish boards**
 - **Administer state funds for community corrections**
 - **Assure that providers are compliant with state standards, local standards, and all levels of law**
 - **Serve as initial regulatory agency in cases of complaints from citizens, offenders, families, or crime victims**
 - **Work with other aspects of local government to advance and facilitate community corrections programs**
 - **Screen referrals for placement into halfway houses**

Colorado Providers/Programs

- **31 residential facilities throughout the state**
 - **Urban**
 - **Rural**
- **Various forms of organizational structure**
 - **For Profit**
 - **Non Profit**
 - **Local Government**

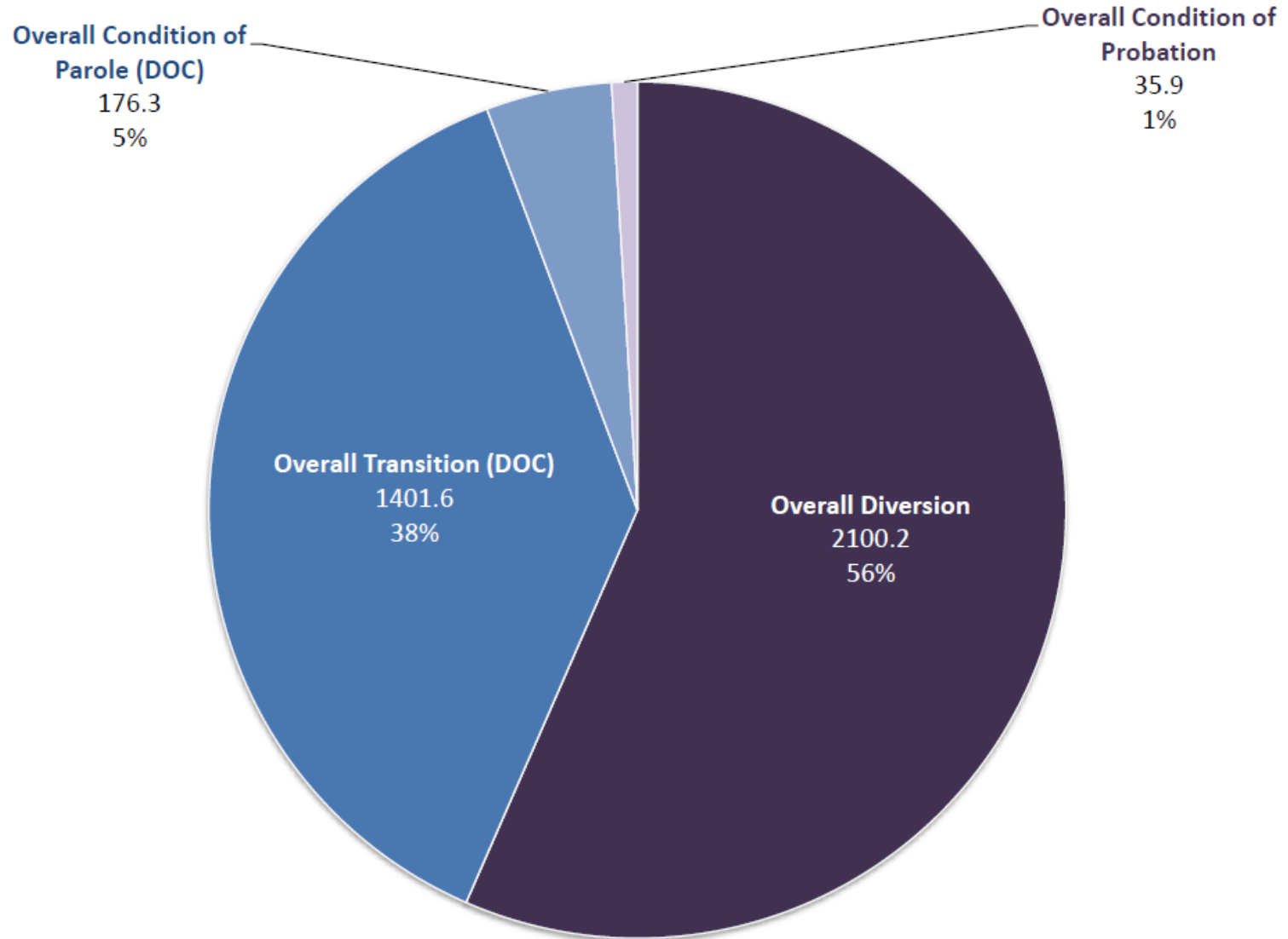
Benefits of Residential Community Corrections

- 24 hour supervision and surveillance
- High structure in programming and supervision
- Community-based placement allows for employment and wide range of services for criminogenic needs
- Offenders pay into restitution, child support, supervision costs, and state/federal tax base
- Cost Savings
 - Half the cost (per day) of prison
 - Prison = \$70-\$90 per day
 - Halfway House - \$42 per day
 - Even lower cost than prison due to shorter length of stay
 - Avg LOS in halfway house is 7 months
 - Avg prison placement is roughly 2 years

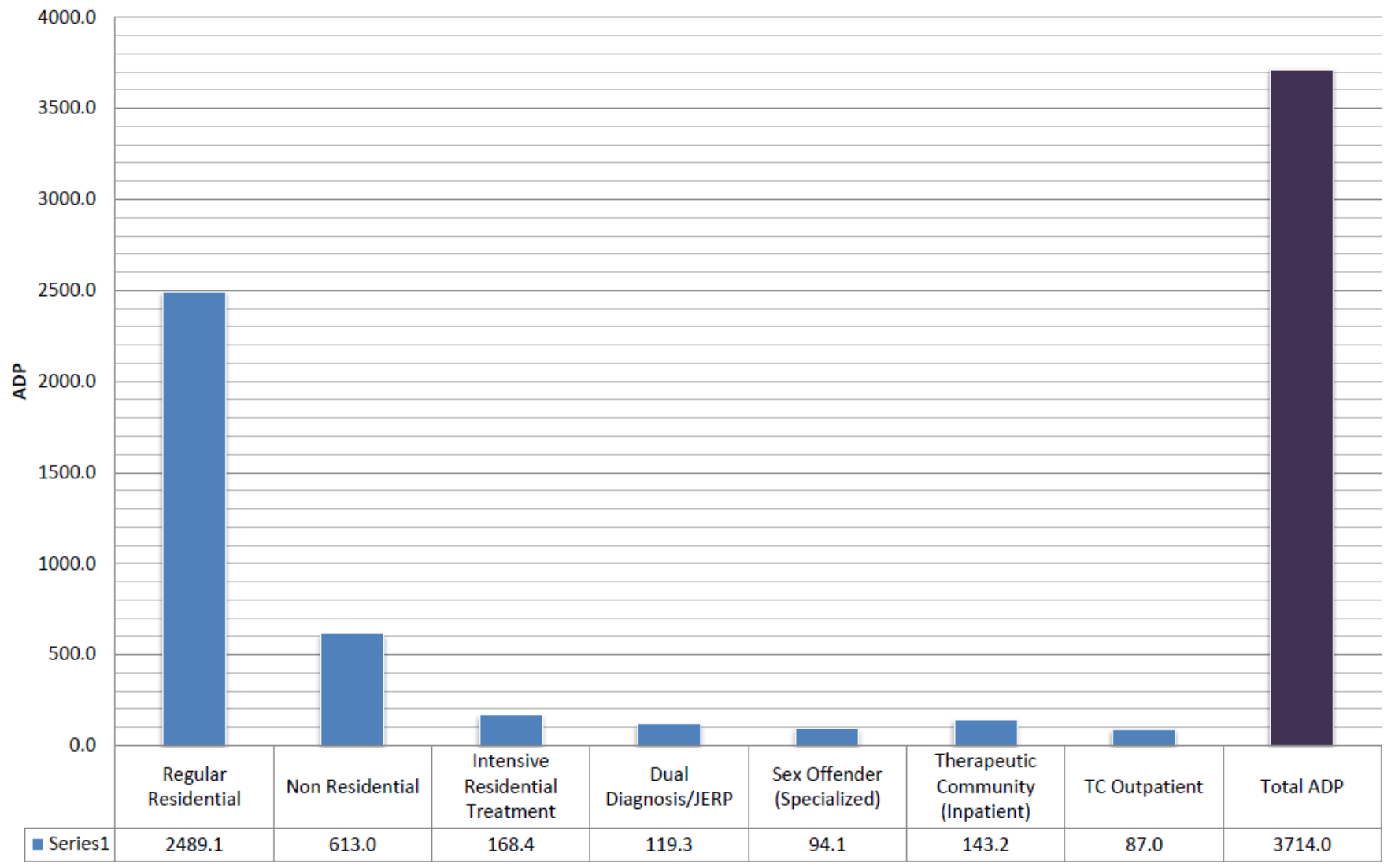
Specialized Treatment in Community Corrections

- **Intensive Residential Treatment**
(Substance Abuse)
- **Therapeutic Community**
(Mental Illness, Substance Abuse)
- **Residential Dual Diagnosis Treatment**
(Mental Illness/Substance Abuse)
- **Sex Offender**
(Supervision and Treatment)

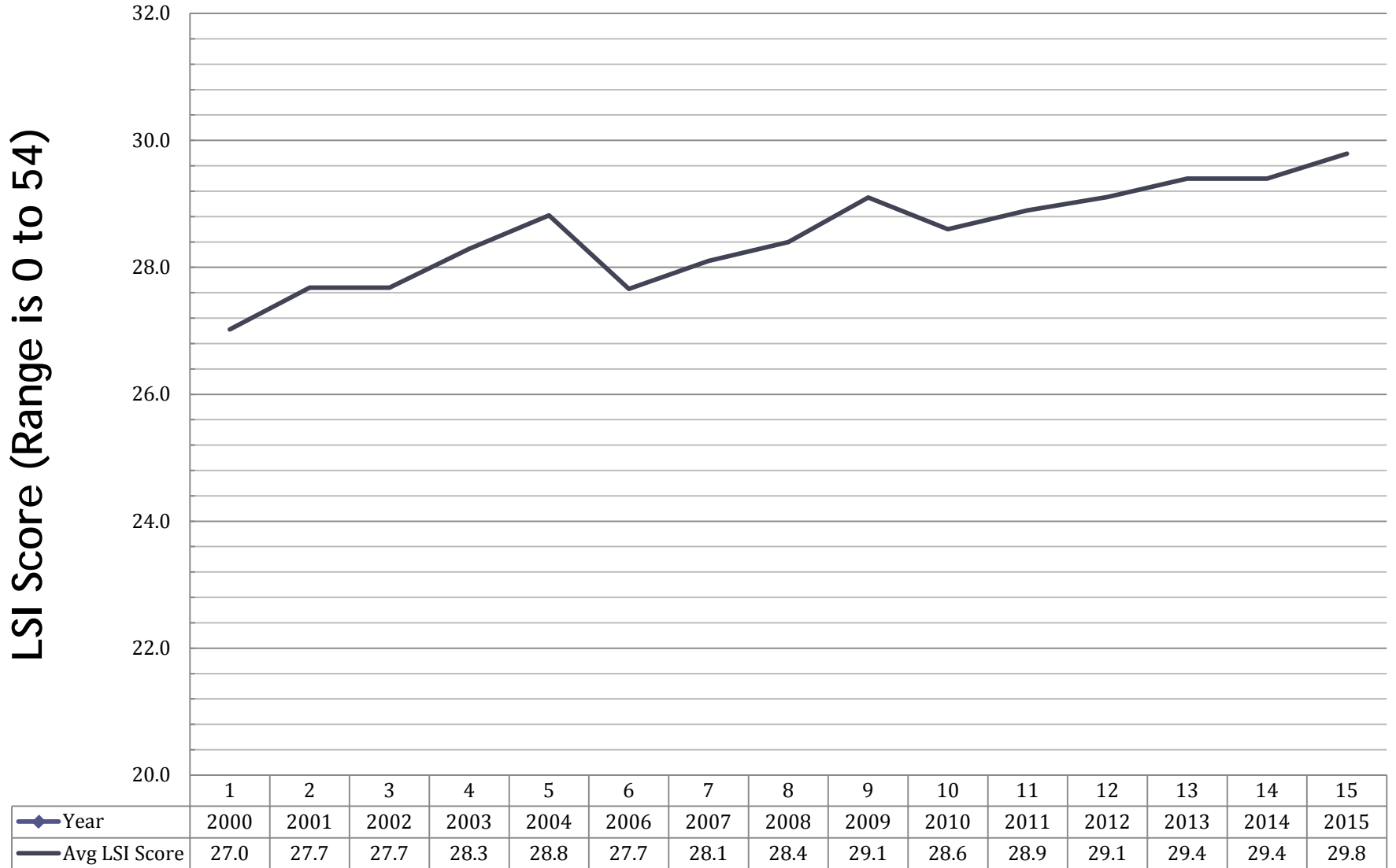
Overall ADP in Community Corrections (FY16 YTD) [Includes Regular and Specialized Placements]



Total Average Daily Population (ADP) in Community Corrections (FY16 YTD) [Regular vs Specialized Placements]



Average LSI Score in Community Corrections 2000 to 2015 (2015 is DRAFT)

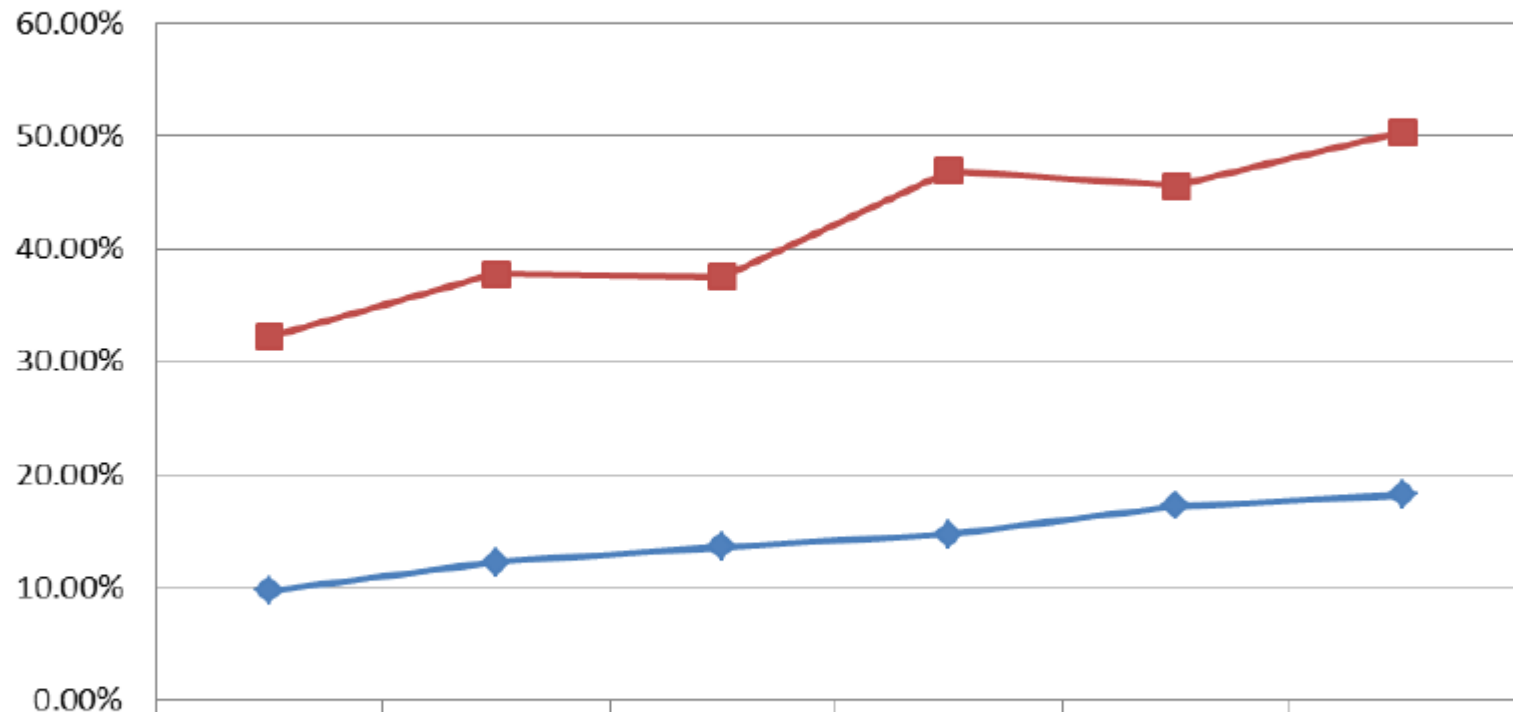


Average Criminal History Score in Community Corrections 2002 through 2014



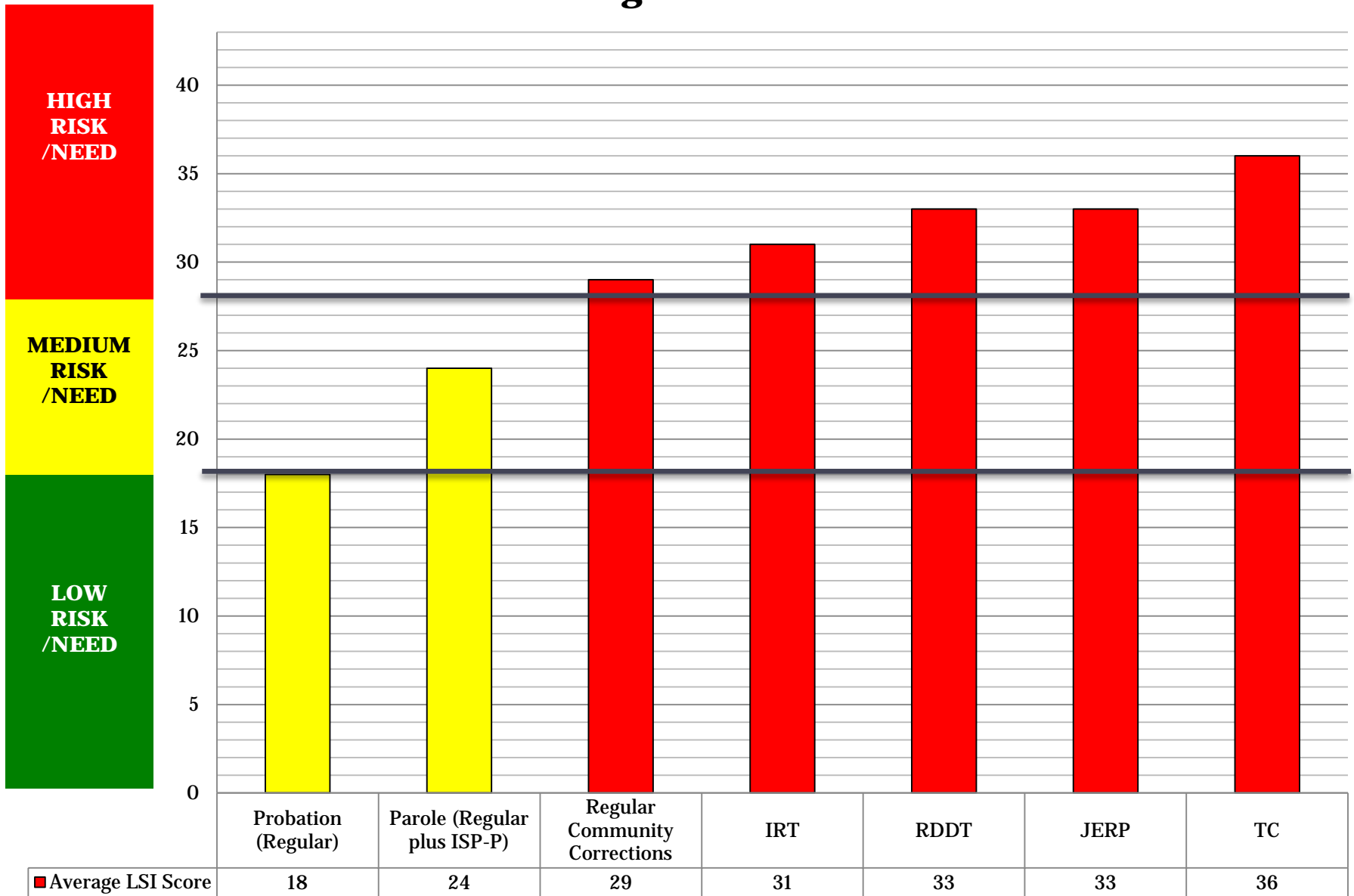
Figure 20

Rate of Mental Illness by Gender

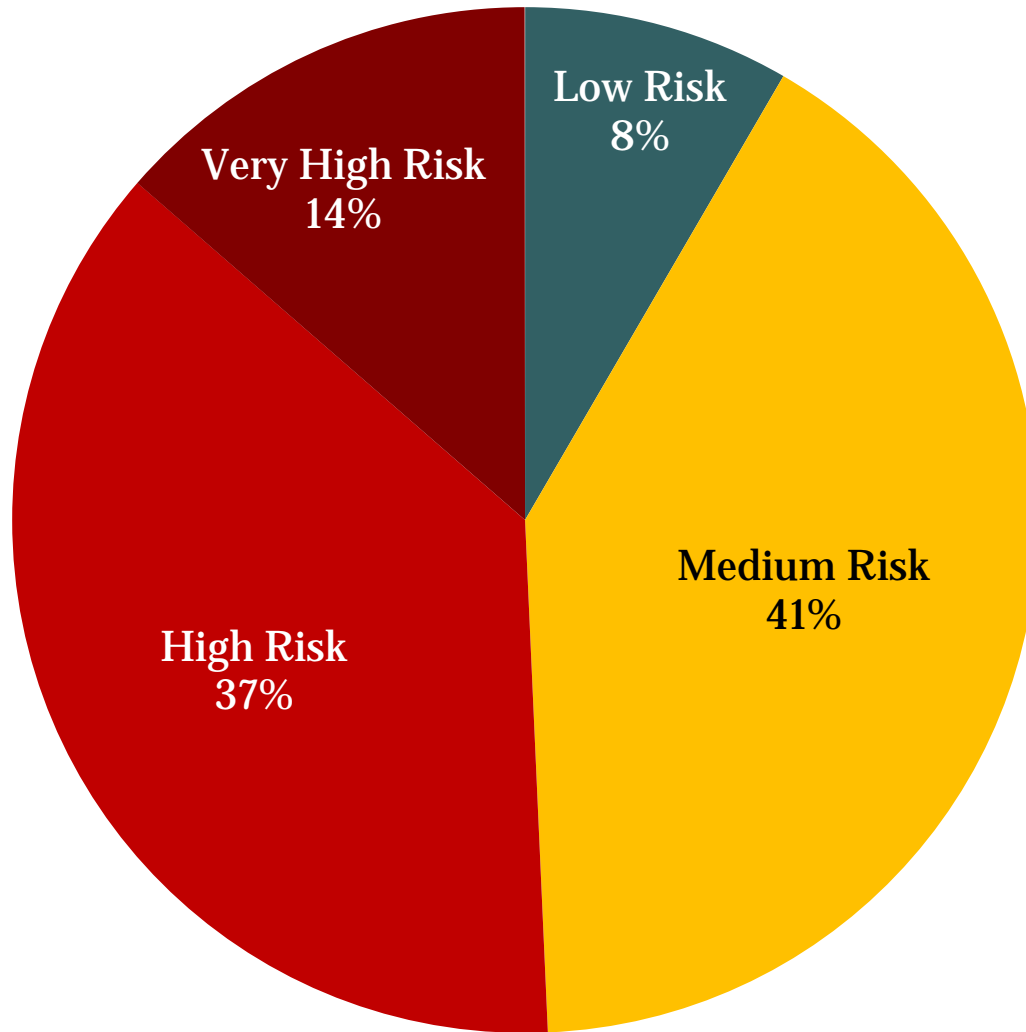


◆ Males	9.70%	12.20%	13.60%	14.70%	17.20%	18.20%
■ Females	32.20%	37.80%	37.60%	47.00%	45.60%	50.40%

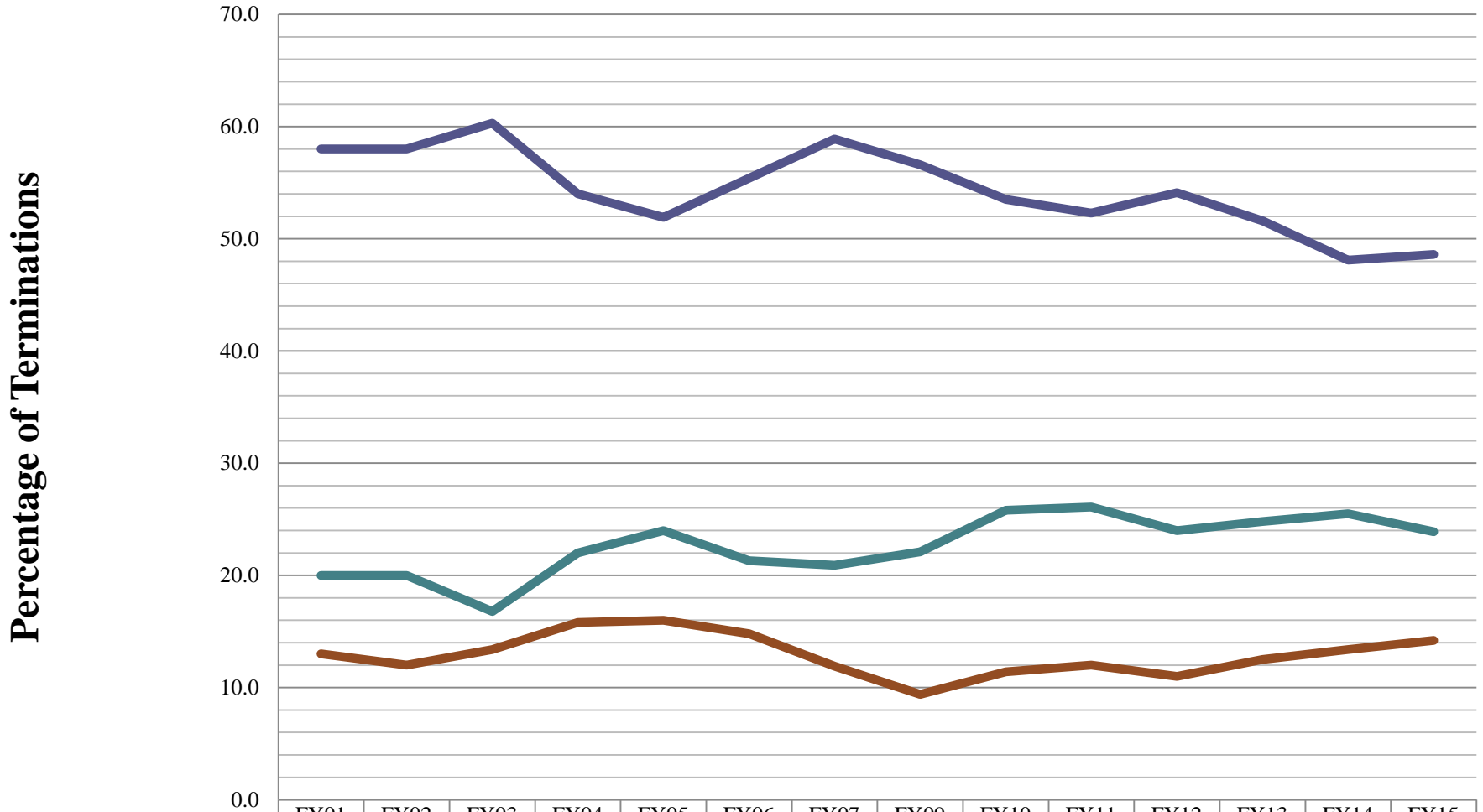
Colorado Community Based Populations Average LSI Score



Risk Level Distributions of Community Corrections Population



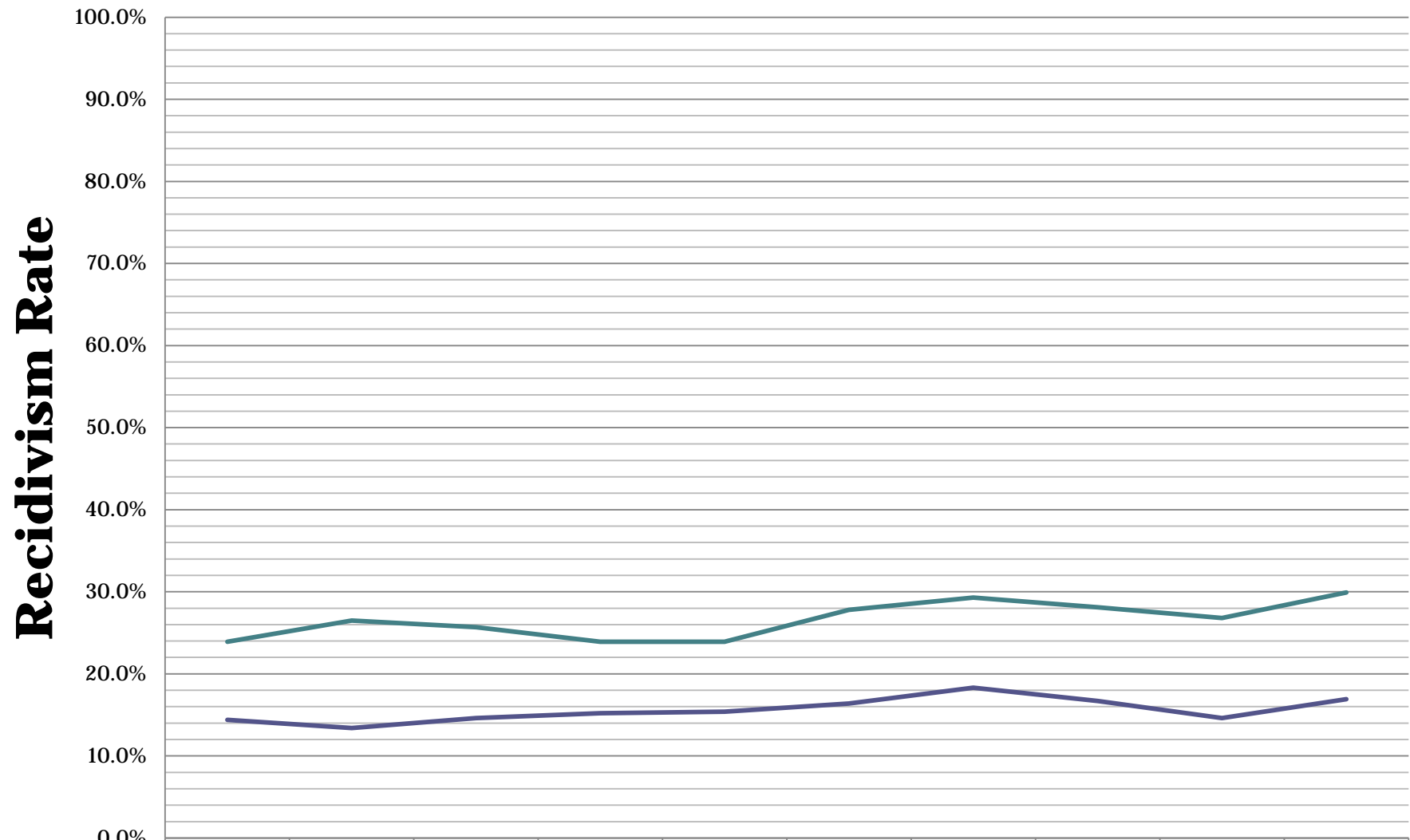
Termination Reasons - Community Corrections FY01 to FY15 (FY15 Data is Draft)



Successful Completion	58.0	58.0	60.3	54.0	51.9	55.4	58.9	56.6	53.5	52.3	54.1	51.6	48.1	48.6
Technical Violation	20.0	20.0	16.8	22.0	24.0	21.3	20.9	22.1	25.8	26.1	24	24.8	25.5	23.9
Escape	13.0	12.0	13.4	15.8	16.0	14.8	11.9	9.4	11.4	12.0	11	12.5	13.4	14.2

	FY01	FY02	FY03	FY04	FY05	FY06	FY07	FY09	FY10	FY11	FY12	FY13	FY14	FY15
Successful Completion	58.0	58.0	60.3	54.0	51.9	55.4	58.9	56.6	53.5	52.3	54.1	51.6	48.1	48.6
Technical Violation	20.0	20.0	16.8	22.0	24.0	21.3	20.9	22.1	25.8	26.1	24	24.8	25.5	23.9
Escape	13.0	12.0	13.4	15.8	16.0	14.8	11.9	9.4	11.4	12.0	11	12.5	13.4	14.2

Recidivism Data in Community Corrections Terminations from 2000 Through 2012

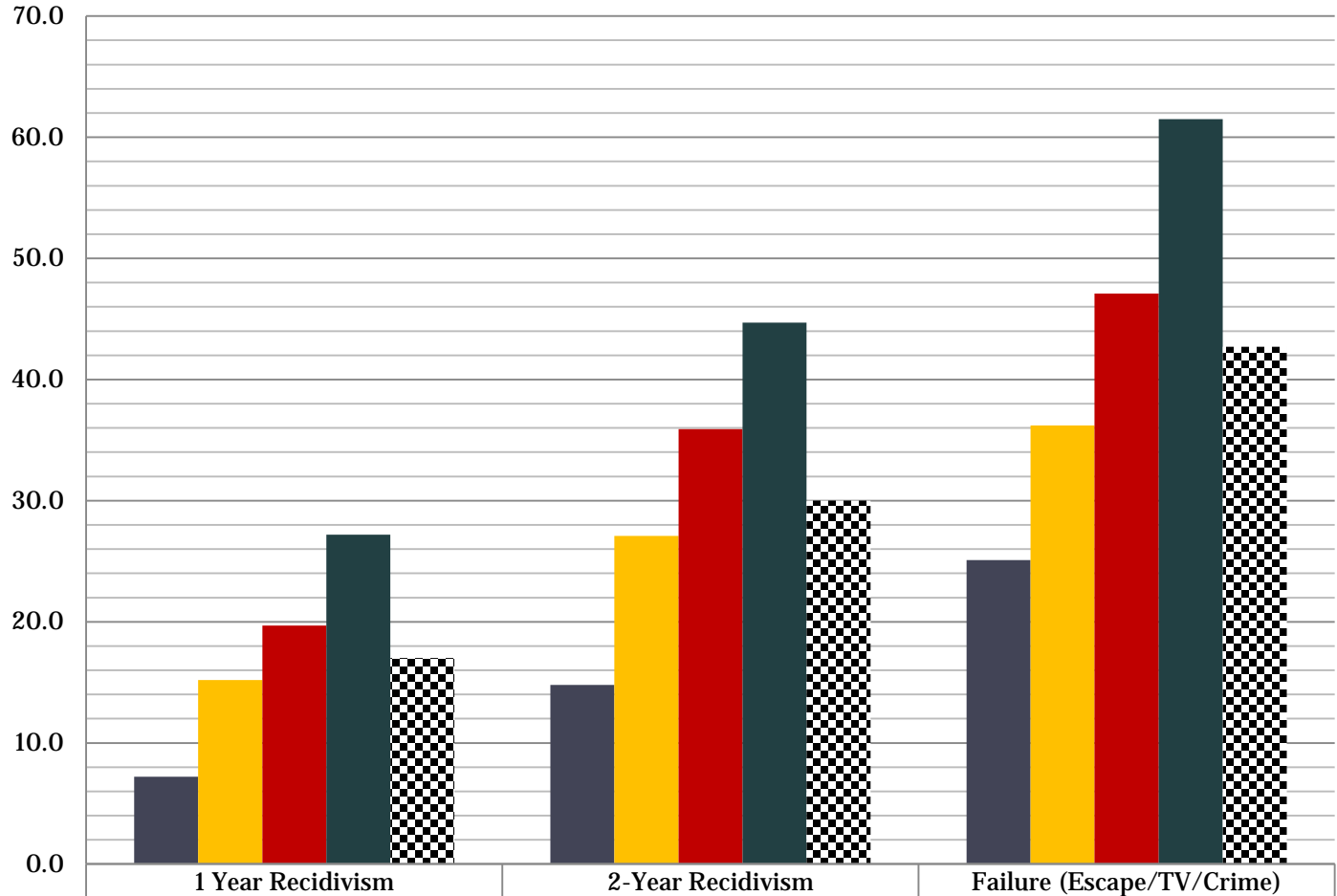


	FY00	FY01	FY02	FY03	FY04	FY05	FY06	FY07	FY08	FY11&12
12 Month	14.4%	13.4%	14.6%	15.2%	15.4%	16.4%	18.3%	16.7%	14.6%	16.9%
24 Month	23.9%	26.5%	25.7%	23.9%	23.9%	27.8%	29.3%	28.1%	26.8%	29.9%

Community Corrections Outcomes by Risk Level (FY2011 Terminations - Regular Community Corrections Clients)

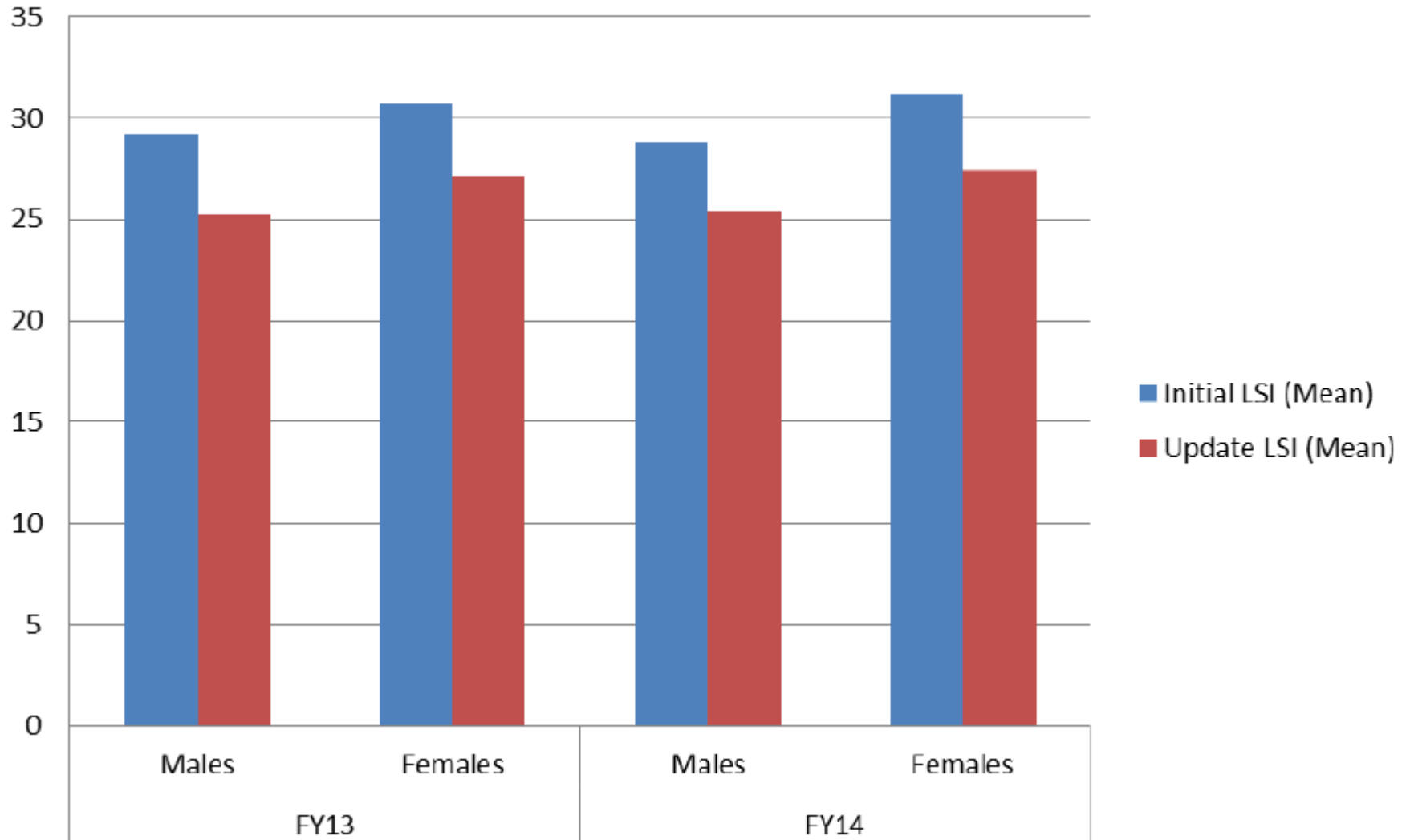
Chi Square: Significance (p<.0001) - DCJ Office of Research and Statistics

Percent



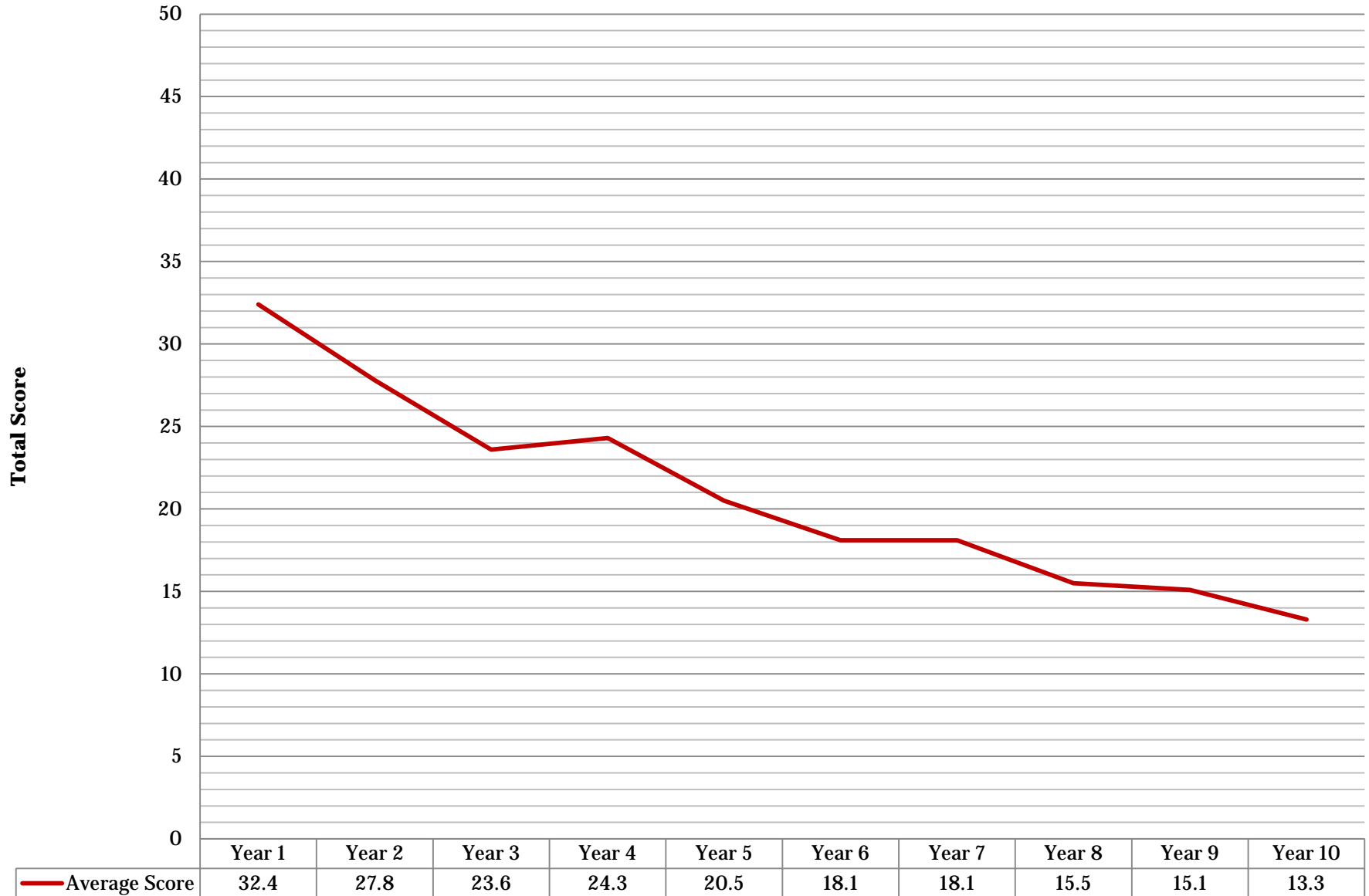
	1 Year Recidivism	2-Year Recidivism	Failure (Escape/TV/Crime)
■ Low Risk (LSI 0-18)	7.2	14.8	25.1
■ Medium Risk (LSI 19-28)	15.2	27.1	36.2
■ High Risk (LSI 29-35)	19.7	35.9	47.1
■ Very High Risk (LSI 36 or greater)	27.2	44.7	61.5
■ Overall	17.0	30.0	42.7

LSI Risk Reduction



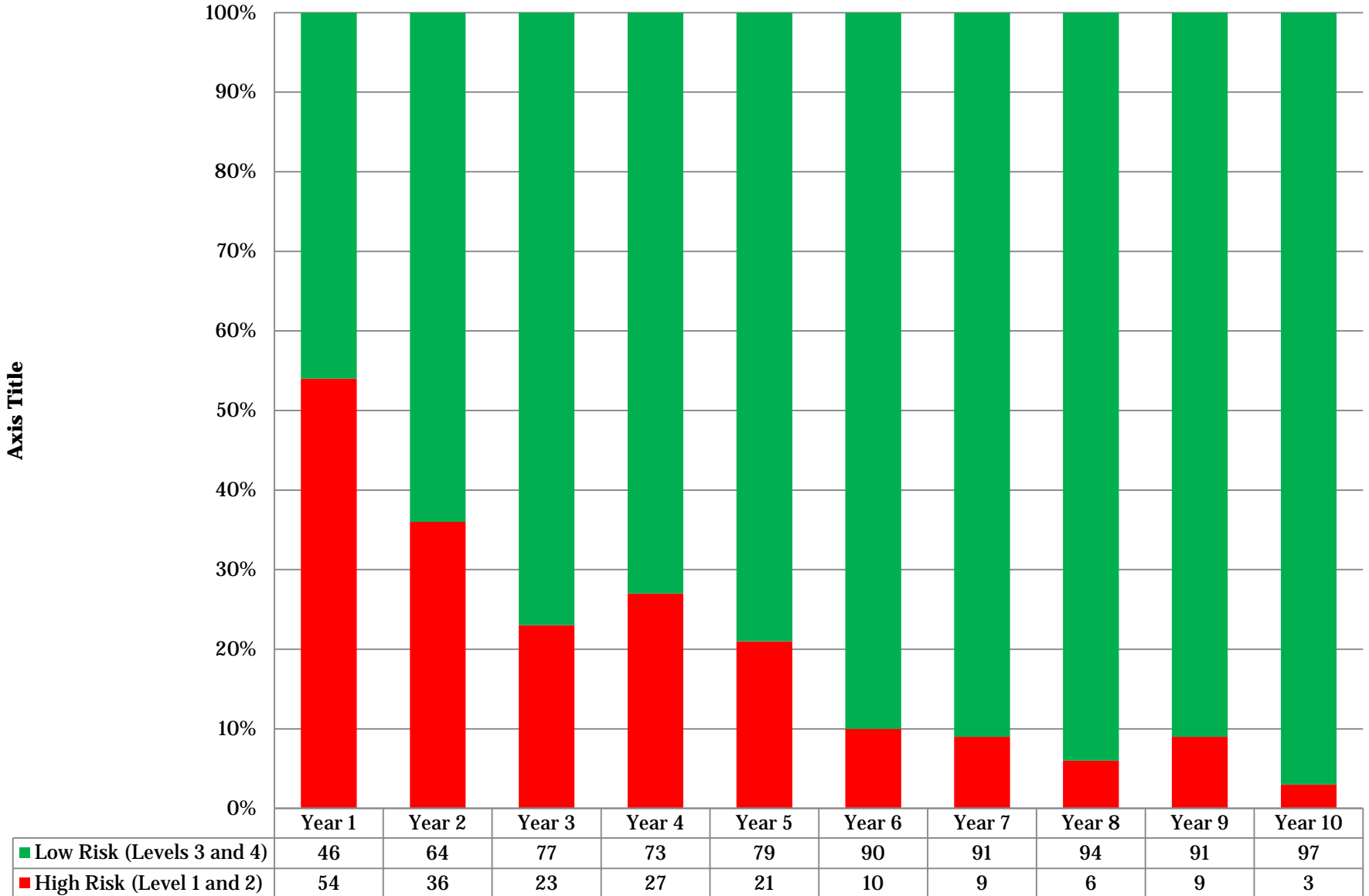
Current Construct of “Performance”

Risk Factor Analysis Score Trend Years 1 through 10

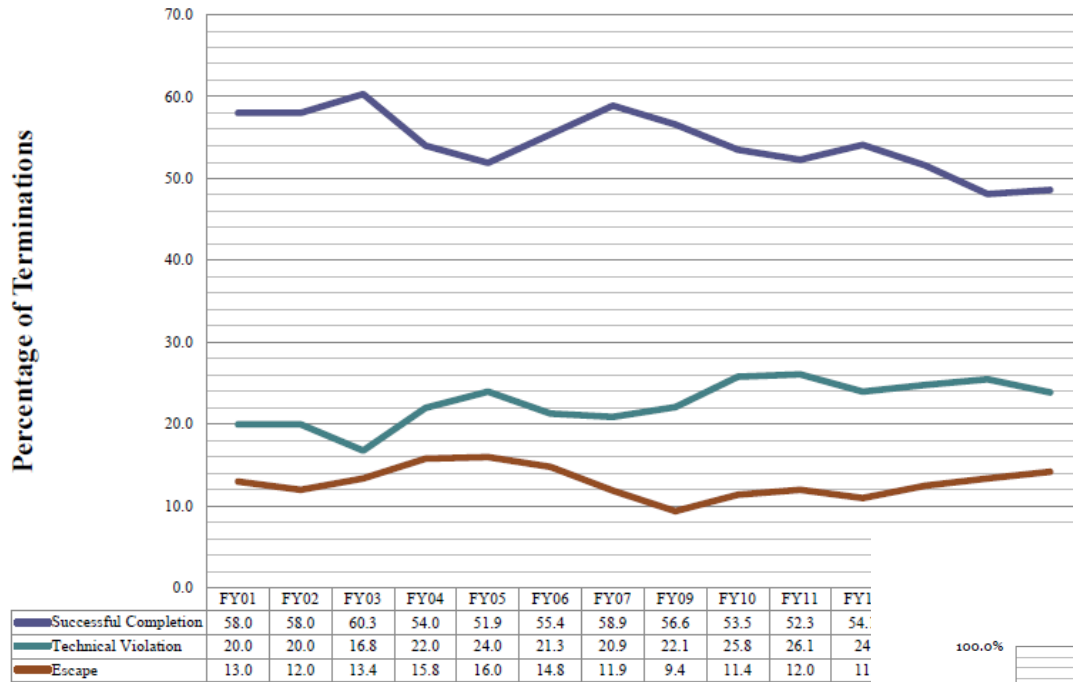


Risk Factor Analysis - 10 Year Trend

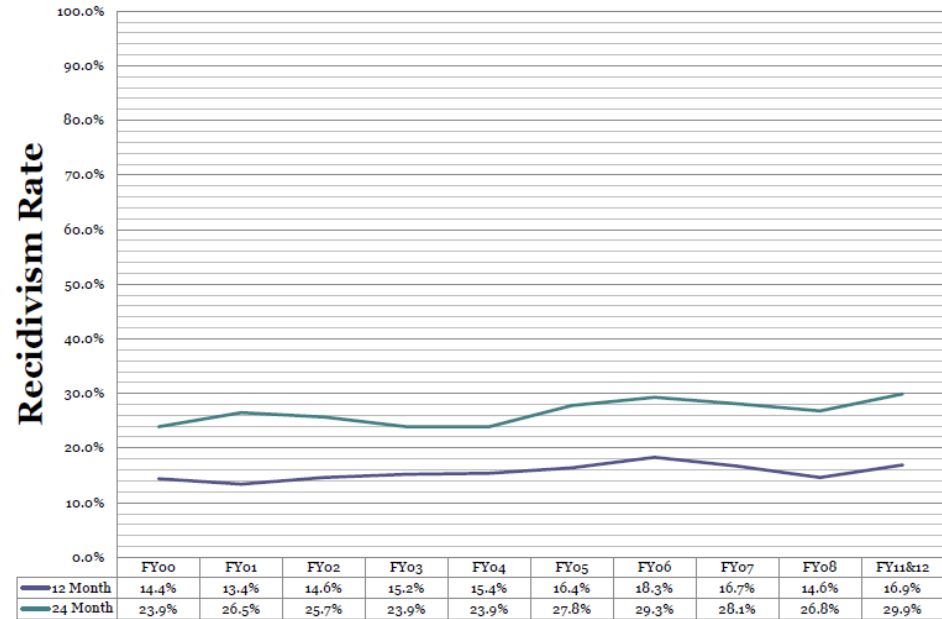
Percent of Programs in Performance Categories



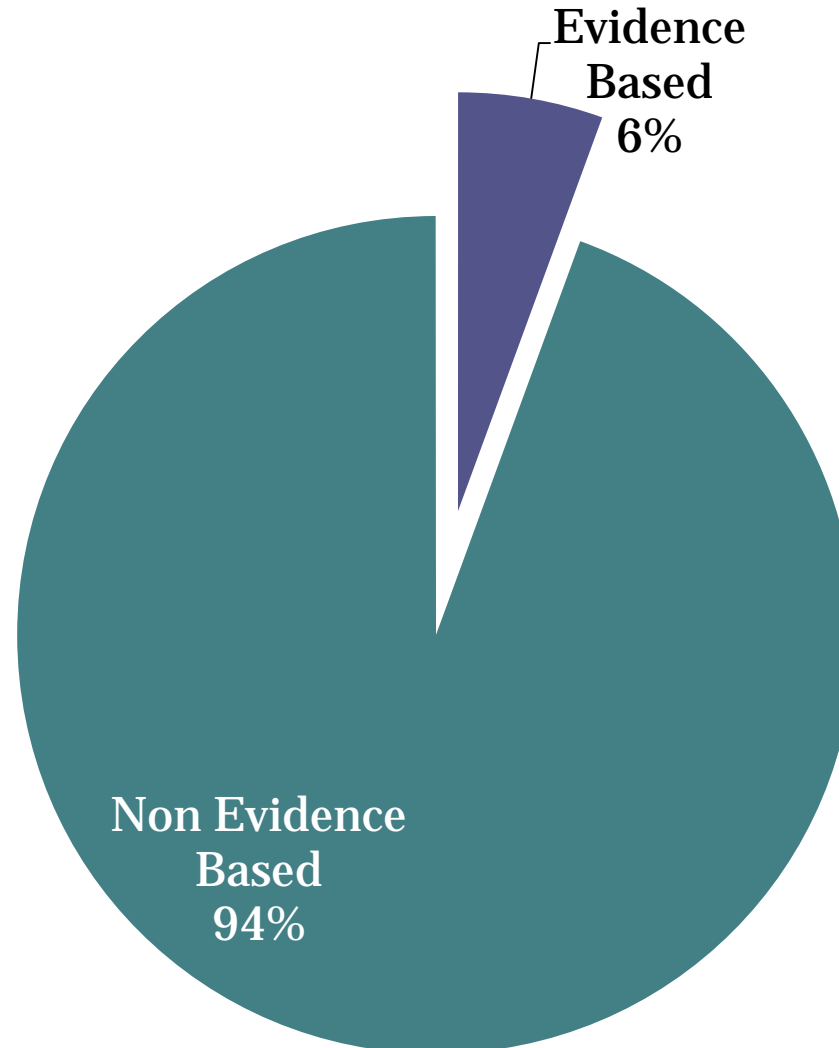
Termination Reasons - Community Corrections FY01 to FY15 (FY15 Data is Draft)



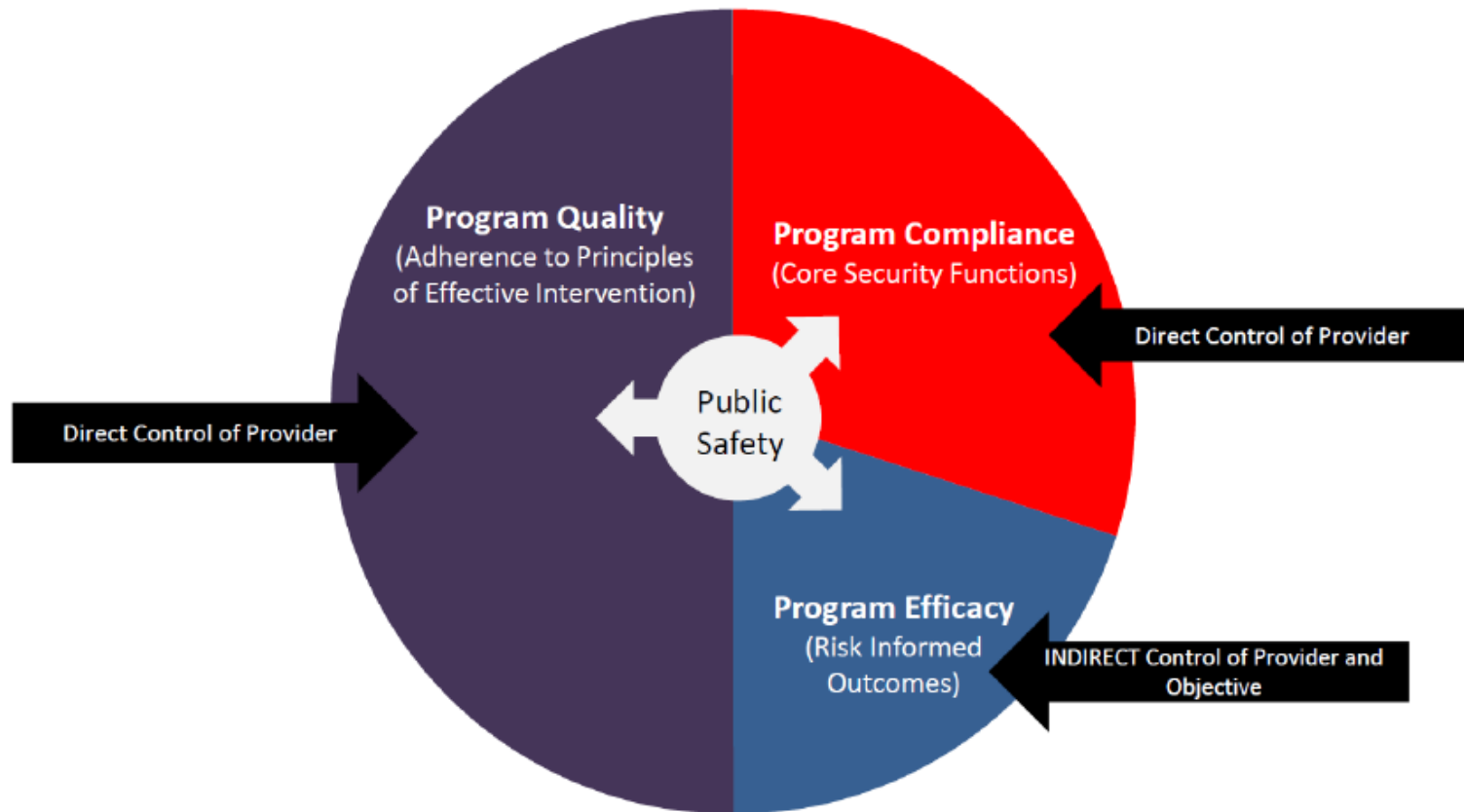
Recidivism Data in Community Corrections Terminations from 2000 Through 2012



125 Current Standards



Future Definition of Performance??

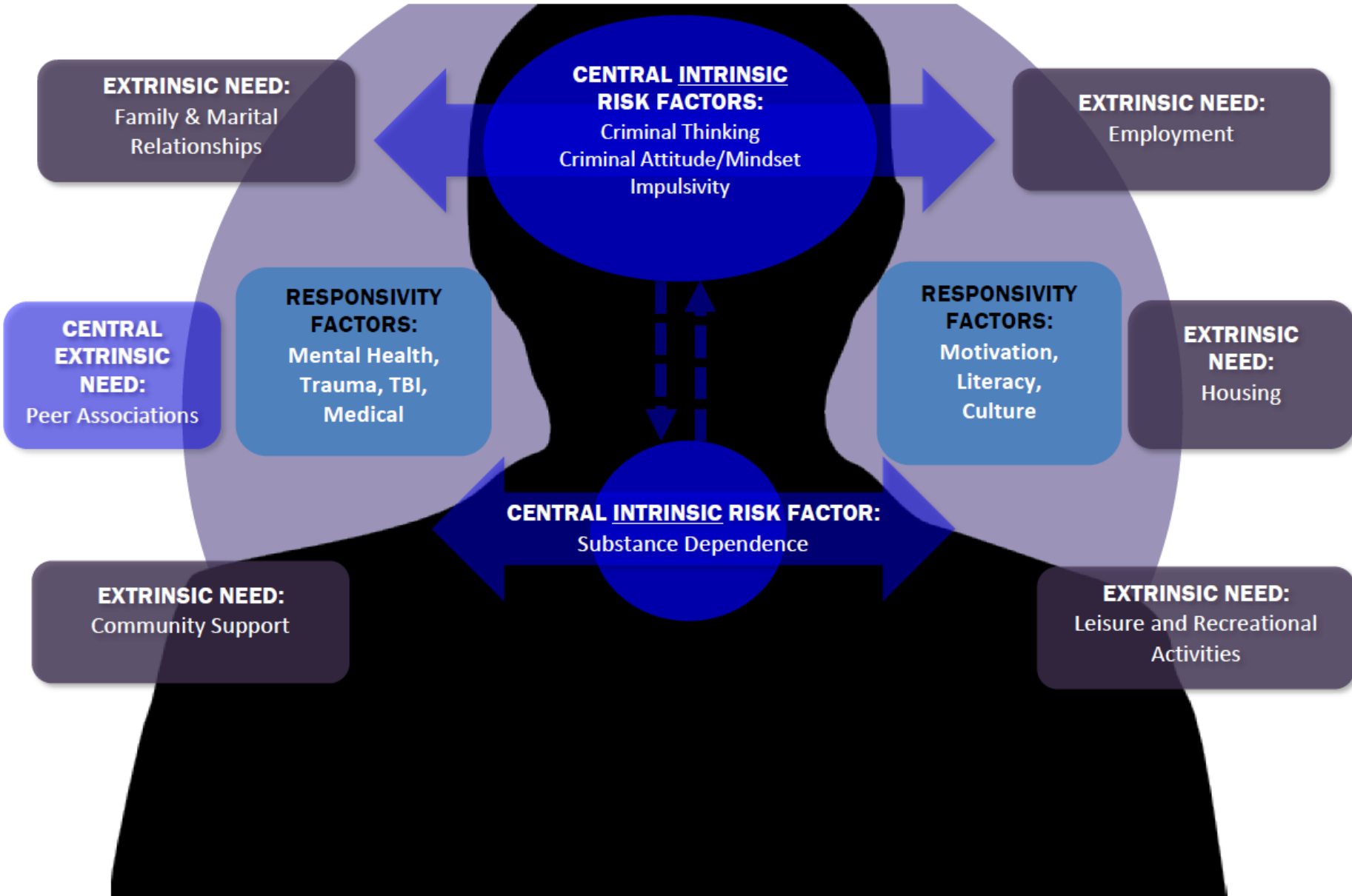


Current Risk Reduction Initiatives

in Community Corrections

The **INSIDE-OUT** Method of Risk Reduction

[Intrinsic Risk Reduction Factors and Extrinsic Risk Reduction Needs]



EXTRINSIC NEED:
Family & Marital Relationships

EXTRINSIC NEED:
Employment

CENTRAL INTRINSIC RISK FACTORS:
Criminal Thinking
Criminal Attitude/Mindset
Impulsivity

CENTRAL EXTRINSIC NEED:
Peer Associations

RESPONSIVITY FACTORS:
Mental Health, Trauma, TBI, Medical

RESPONSIVITY FACTORS:
Motivation, Literacy, Culture

EXTRINSIC NEED:
Housing

CENTRAL INTRINSIC RISK FACTOR:
Substance Dependence

EXTRINSIC NEED:
Community Support

EXTRINSIC NEED:
Leisure and Recreational Activities

Current/Future Initiatives

- **Progression Matrix**
- **Structured Sanctions/Incentives (Grant Funded)**
- **Effective Interventions with Offenders (Motivational Interviewing and Behavior Change Support)**
- **Evidence Based Professional Standards**
- **MAYBE: Program Evaluation Tool (Hopefully)?**
- **MAYBE: Performance Based Contracting?**
- **MAYBE: Specialized Program for Very High Risk/High Need/Criminality**

Final Summary of Colorado Community Corrections

- Based on state/local government partnership
- Its the community-based strategy for higher risk/higher need offenders with 20% of residential placements for specialized behavioral health treatment
- Risk/Need levels continue to climb along with increasing levels of criminal history and mental illness
- Outcomes need improvement!
- In the process of long-term transformation
- DCJ is changing its expectations from providers and providing technical support
- DCJ intends to change the definition of “performance”
- Future reform initiatives are in the design phase