

THE CASE FOR UNDERSTANDING

- Adolescence is a time of growth and change.
- Ages 9-25.
- Typically the healthiest time in life, yet disease and death rates increase 200-300% during this time.

Ronald E Dahl, M.D. (University of Pittsburgh Med. Center)

IT'S ABOUT
YOU

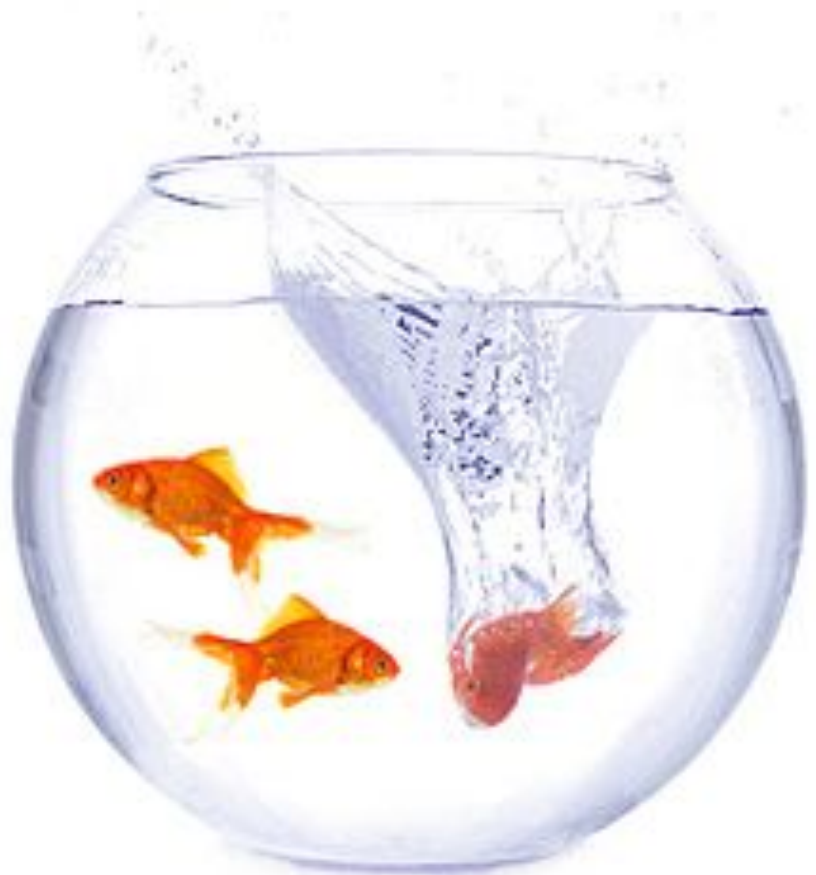


COLORADO
Department of Public
Health & Environment

ADOLESCENT DEVELOPMENT



COLORADO
Department of Public
Health & Environment



COLORADO
Department of Public
Health & Environment

TURNING THE TABLES: 8 DEVELOPMENTAL TASKS

- Adjusting to physical changes
- Adjusting to sexually maturing body & feelings
- Developing and applying abstract thinking skills
- Defining a personal sense of identity
- Adopting a personal value system
- Renegotiating relationships with caregivers
- Developing stable and productive peer relationships
- Meeting demands of increasingly mature roles & responsibilities





Frances Jensen, MD, FACP
UNIVERSITY OF PENNSYLVANIA

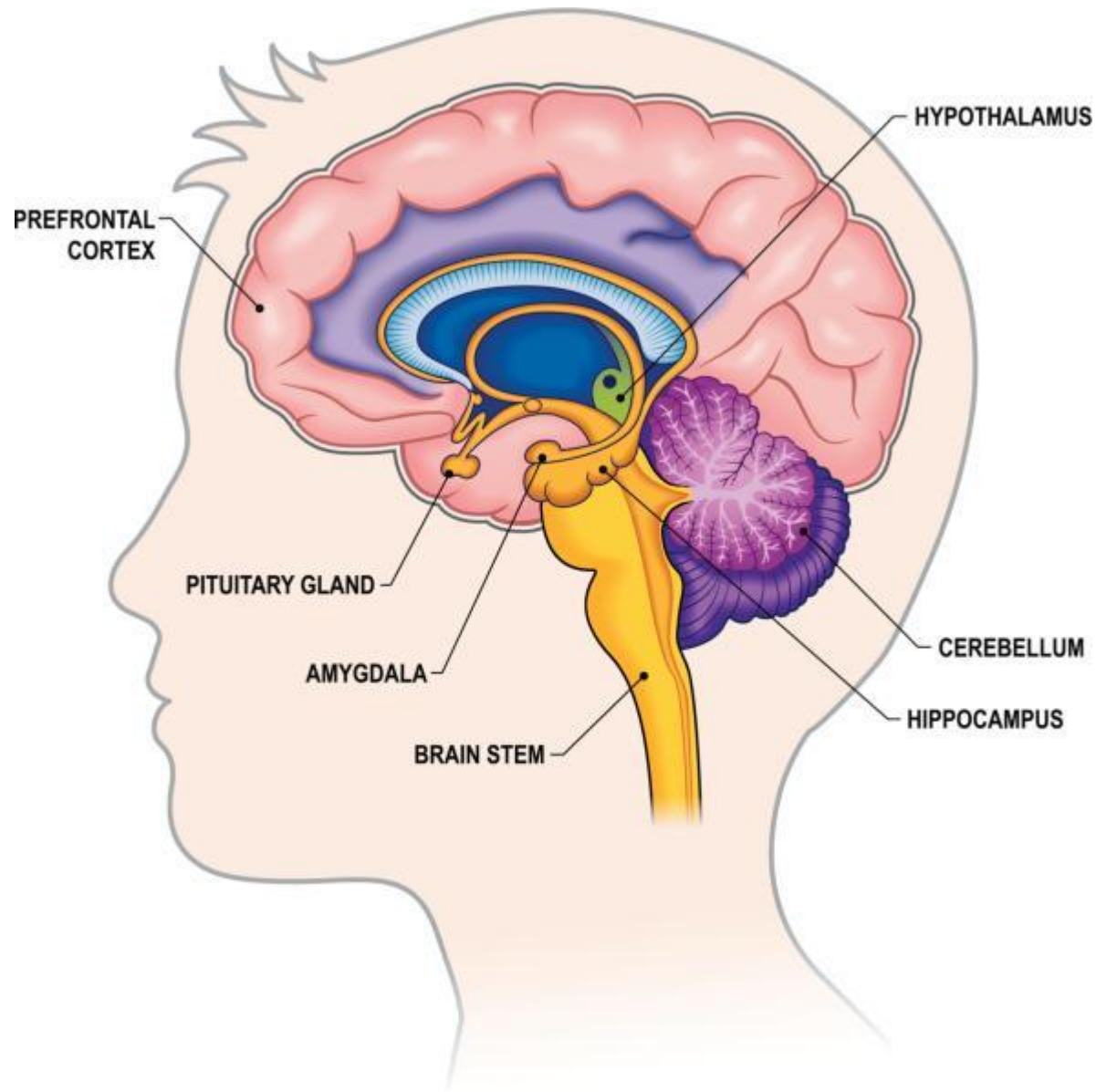


THE POWER OF THE ADOLESCENT BRAIN

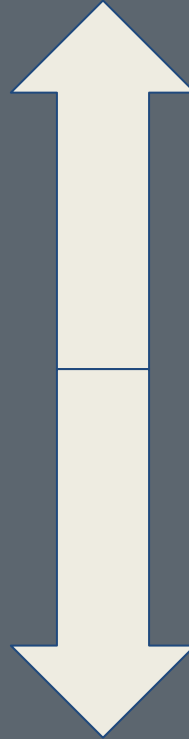


youth.gov



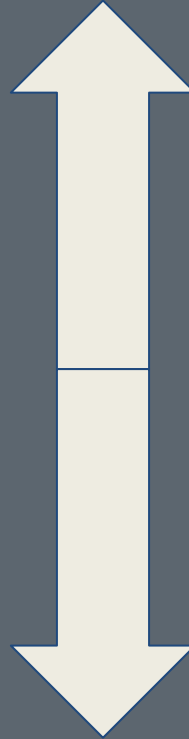


LOGICAL REASONING (cold cognition)



EMOTIONAL CONTROL & RESPONSE (hot cognition)

ABLE TO



CONSISTENTLY DEMONSTRATE



COLORADO
Department of Public
Health & Environment

Adolescent brain...



is not just an adult brain with fewer miles on it. It's a paradoxical time of development.

These are people with very sharp brains, but they're not quite sure what to do with them.

Frances E. Jensen

YOUNG PEOPLE ARE PRIMED TO:

- Learn
- Practice behaviors
- Adopt habits that they will take into adulthood



IT BEGINS WITH
YOU



COLORADO
Department of Public
Health & Environment

ENVIRONMENT MATTERS



COLORADO
Department of Public
Health & Environment

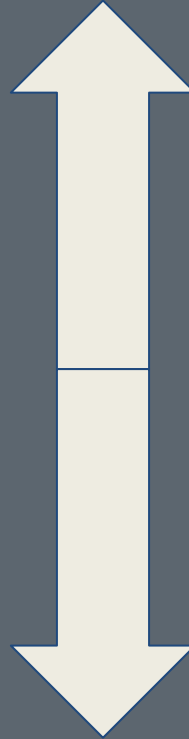
Aging out of crime?

“While brain development is a key factor affecting young adult behavior, so too are social considerations. Criminologists have found that the process of adopting “adult” routines and roles - such as marriage and stable employment - is associated with a desistance from criminal behavior and maturity”



COLORADO
Department of Public
Health & Environment

VULNERABILITY

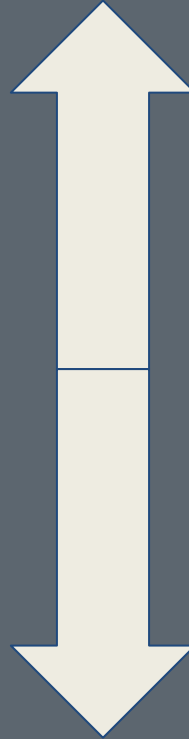


RESILIENCE



COLORADO
Department of Public
Health & Environment

LIFE



DEATH



COLORADO
Department of Public
Health & Environment

Guilt vs Culpability vs Consequence



COLORADO
Department of Public
Health & Environment

OUR APPROACH MATTERS.

Training

Policy changes

Services

Systems-approach



COLORADO
Department of Public
Health & Environment

A silhouette of a person walking a dog and riding a bicycle at sunset. The person is walking a dog on the left and riding a bicycle on the right. The background is a warm, orange sunset sky with a blurred cityscape in the distance.

QUESTIONS? REACH OUT!

Audra Bishop
audra.bishop@state.co.us



COLORADO
Department of Public
Health & Environment