



*Colorado Commission on Criminal and Juvenile Justice
Sentencing Reform Task Force*

**Sentence Structure Working Group
Listening Session #3**

**Probation Typologies & Crime Types
Stakeholder Feedback: Glenn Tapia**

July 27, 2021

Initial Thoughts

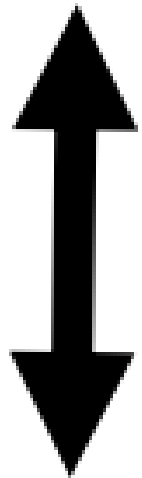
- Where do people fail the CJ system versus **where does the CJ system fail people**
- Challenge long-held assumptions about the relationship of crime type with the risks and needs of justice-involved people.
- Law deals with responses to events/behavior (crime type)
- Downstream: corrections deals with people (risks and needs)

Colorado Probation

Colorado Probation's Population: Risk-Need-Responsivity Strategies

Typologies are a research-informed practice that categorize adult probationers according to similar risk and need profiles to better tailor supervision strategies in alignment with the Risk-Needs-Responsivity framework. The profiles are listed below with distinguishing characteristics for each profile.

Higher Risk



Lower Risk

LS: Limit Setter

- Higher risk probationers with few protective factors and more involved criminal histories.
- Score higher on the *intrinsic* (attitudinal and behavioral) criminogenic need areas (e.g. Impulsivity)

CC: Casework Control

- High risk and high need in the areas of behavioral health (SUD, MH, Dual Dx).
- Scores above average on almost every measure with chronic instability

CM: Case Management

- The largest proportion of the probation population
- Assessed as lower to medium risk – often with more *extrinsic* need profiles (employment, family/marital, companions, financial) with no clear indicators that would categorize them in any other group

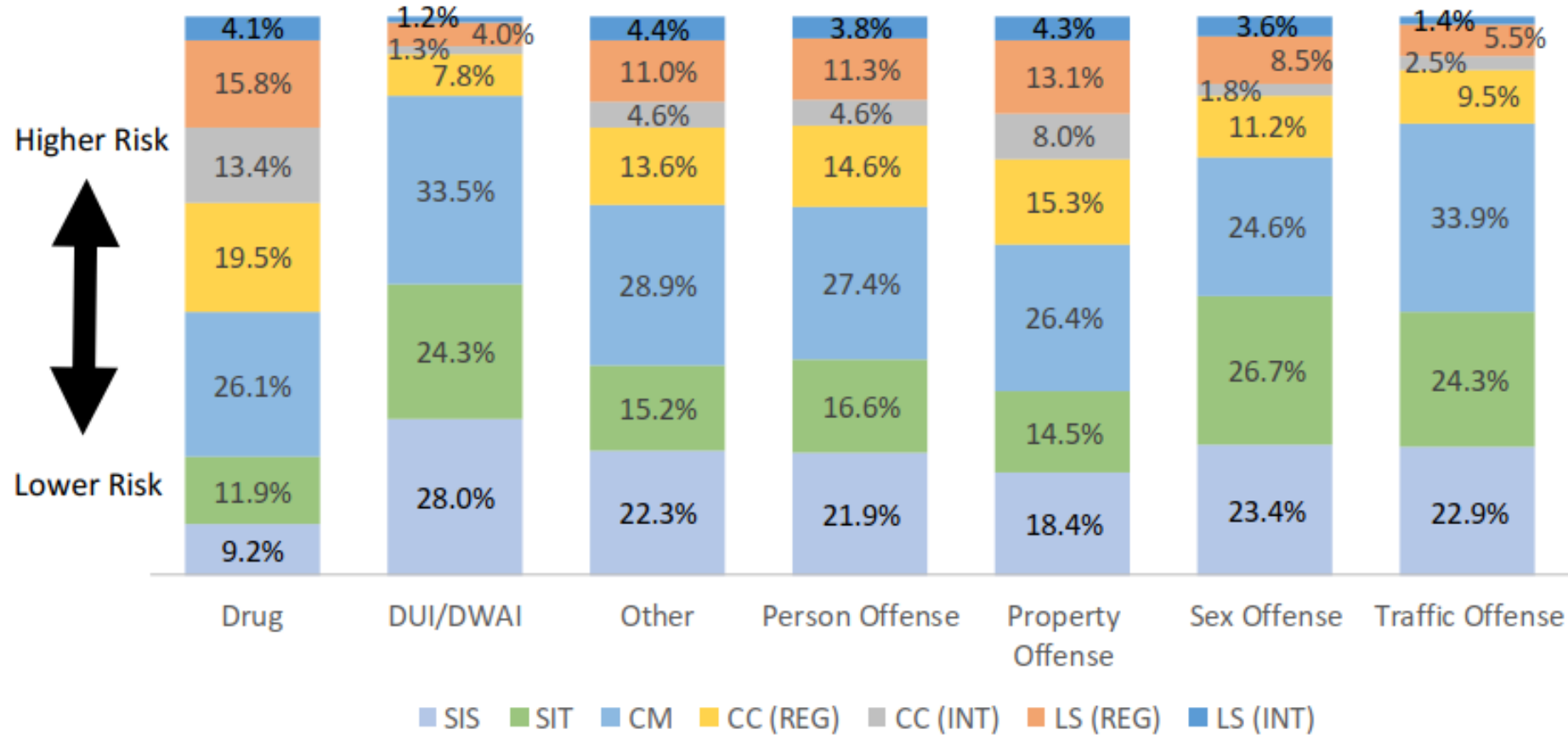
SIT: Selective Intervention-Treatment

- Lower risk with remarkable substance abuse or mental health issues (or co-occurring disorders)

SIS: Selective Intervention-Situational

- Low risk with no treatment need

DISTRIBUTION OF TYPOLOGIES WITHIN THE MOST SERIOUS CRIME TYPE CONVICTION FY19 TERMINATIONS



Note: "Other" offenses include a variety of crimes including, but not limited to, harassment, forgery, false information to a pawnbroker, criminal impersonation, failure to register, menacing and weapons possession.

MOST SERIOUS CRIME TYPE CONVICTION BY TYPOLOGY FY19 TERMINATIONS

