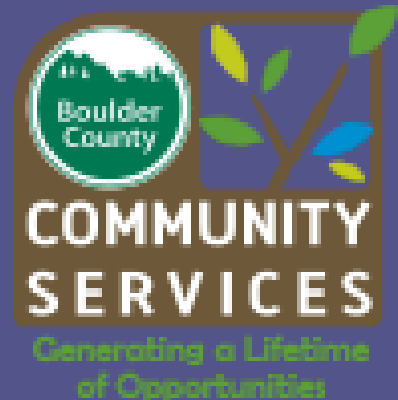


Pretrial Practices in the 20th JD

October 2017

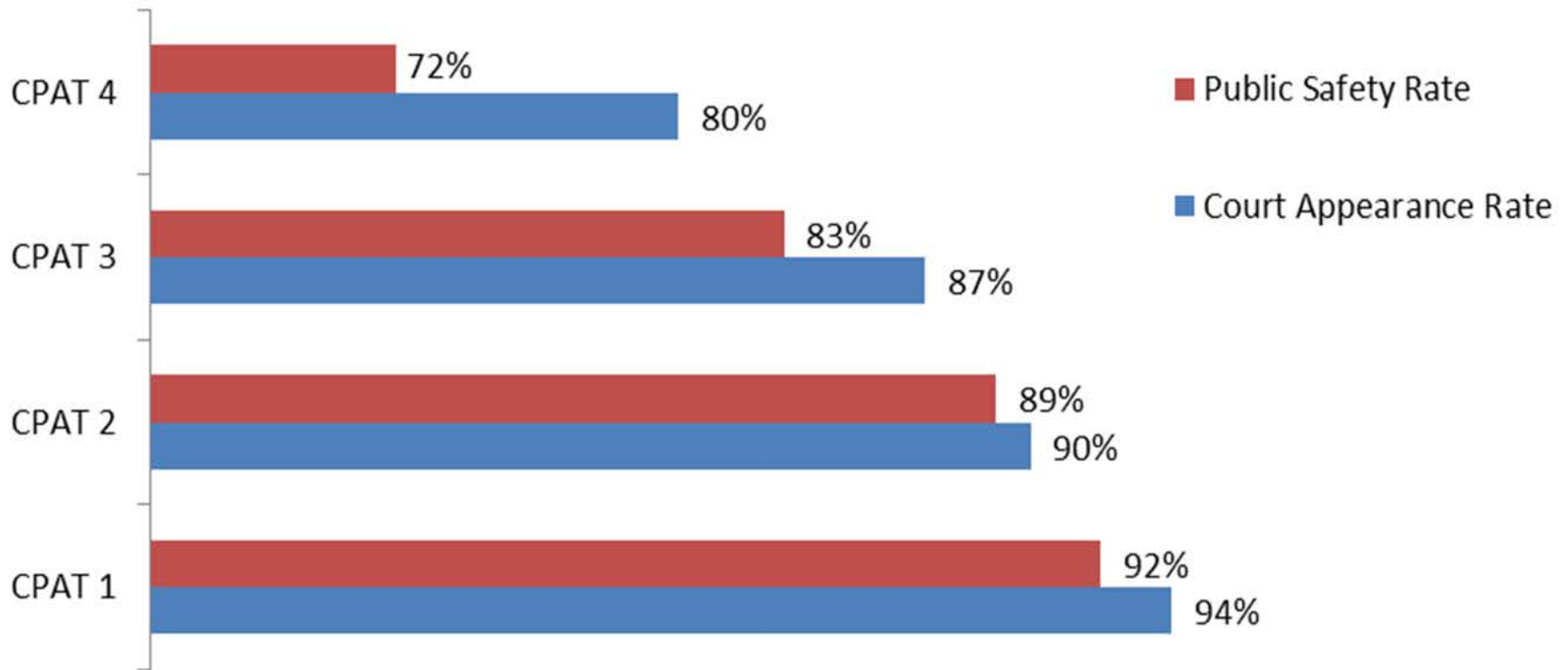


How we got here

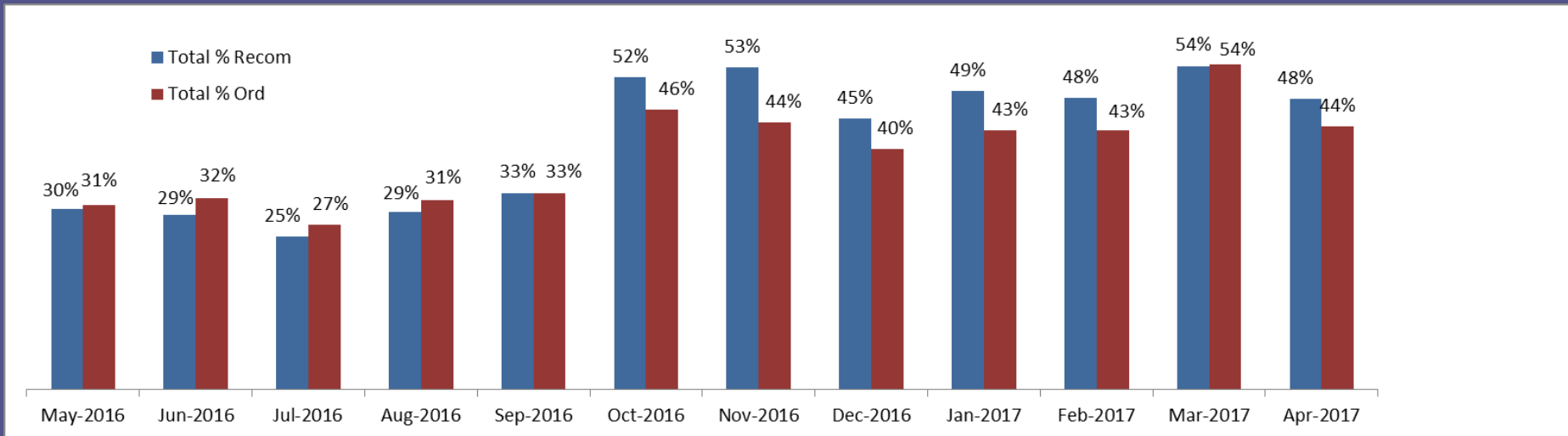
- October 2016: CJS practice change regarding PR recommendations for CPAT 1s and 2s
- November 2016: State Judicial Report comparing PR rates for supervised cases across JDs motivated Chief Judge
- PR Bond/On-ramping Group formed to identify what would make system stakeholders more comfortable with PR bonds.

Data Supports the Conversation

CPAT Outcomes 2013-2015

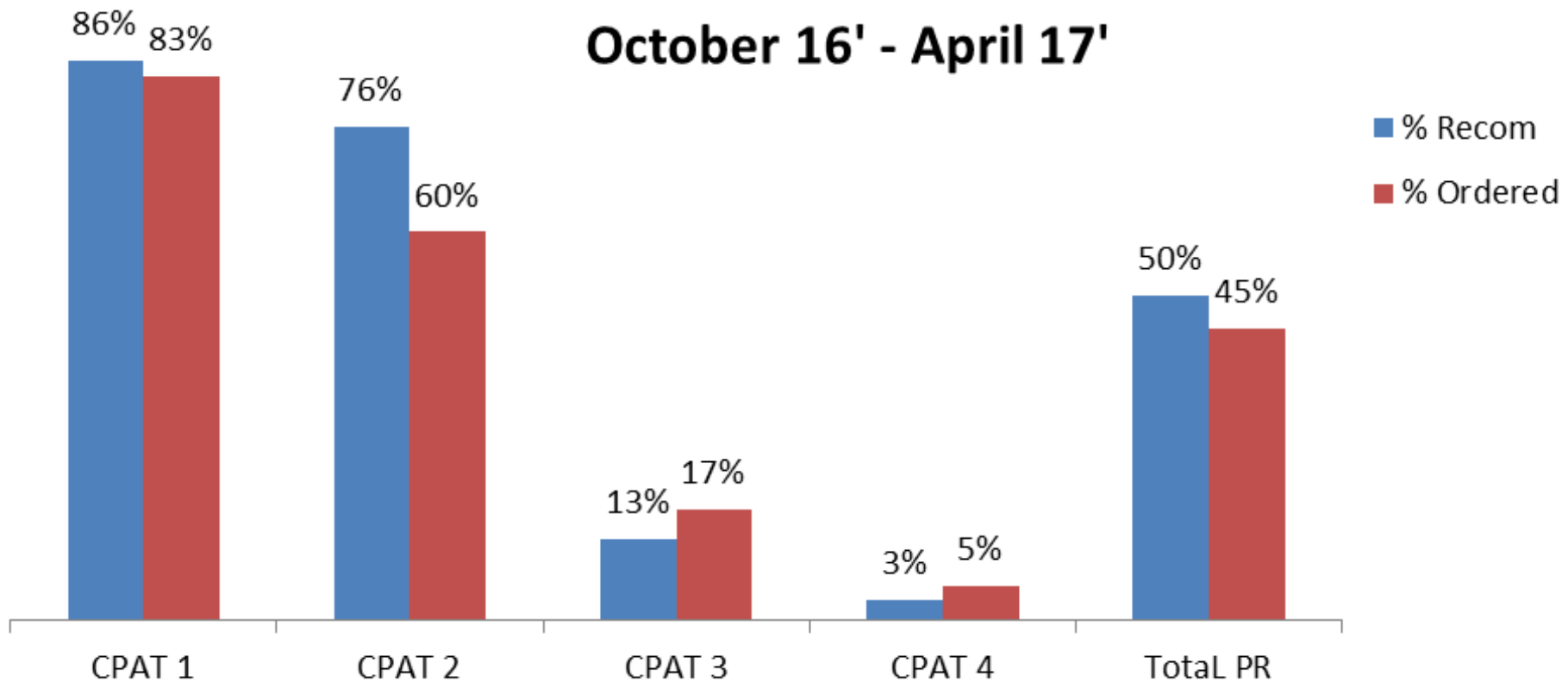


Percentage of Interviews with PR Recommendations/Orders May 2016 - April 2017

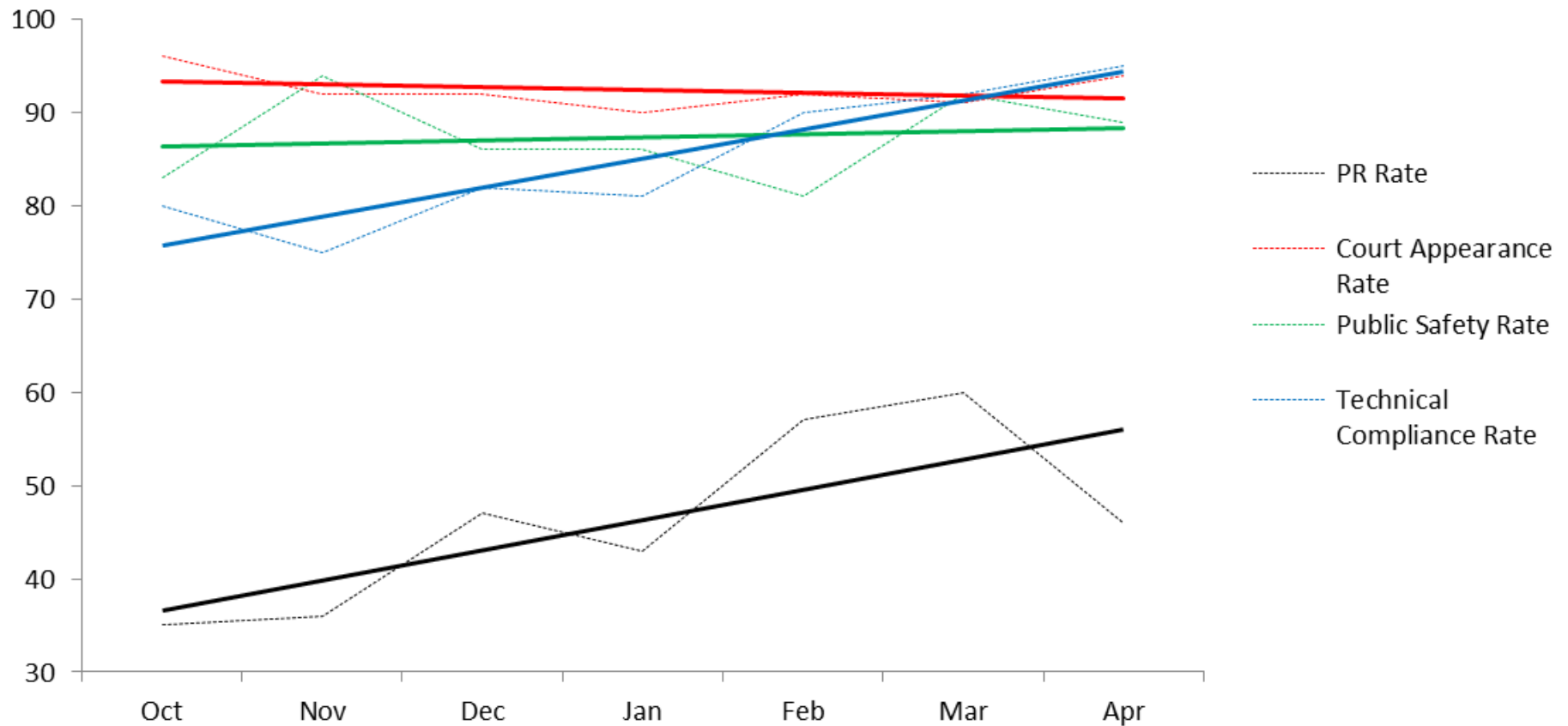


PR Bond Recommendations by CPAT Category

**PR Bonds % Recommended vs Ordered
October 16' - April 17'**



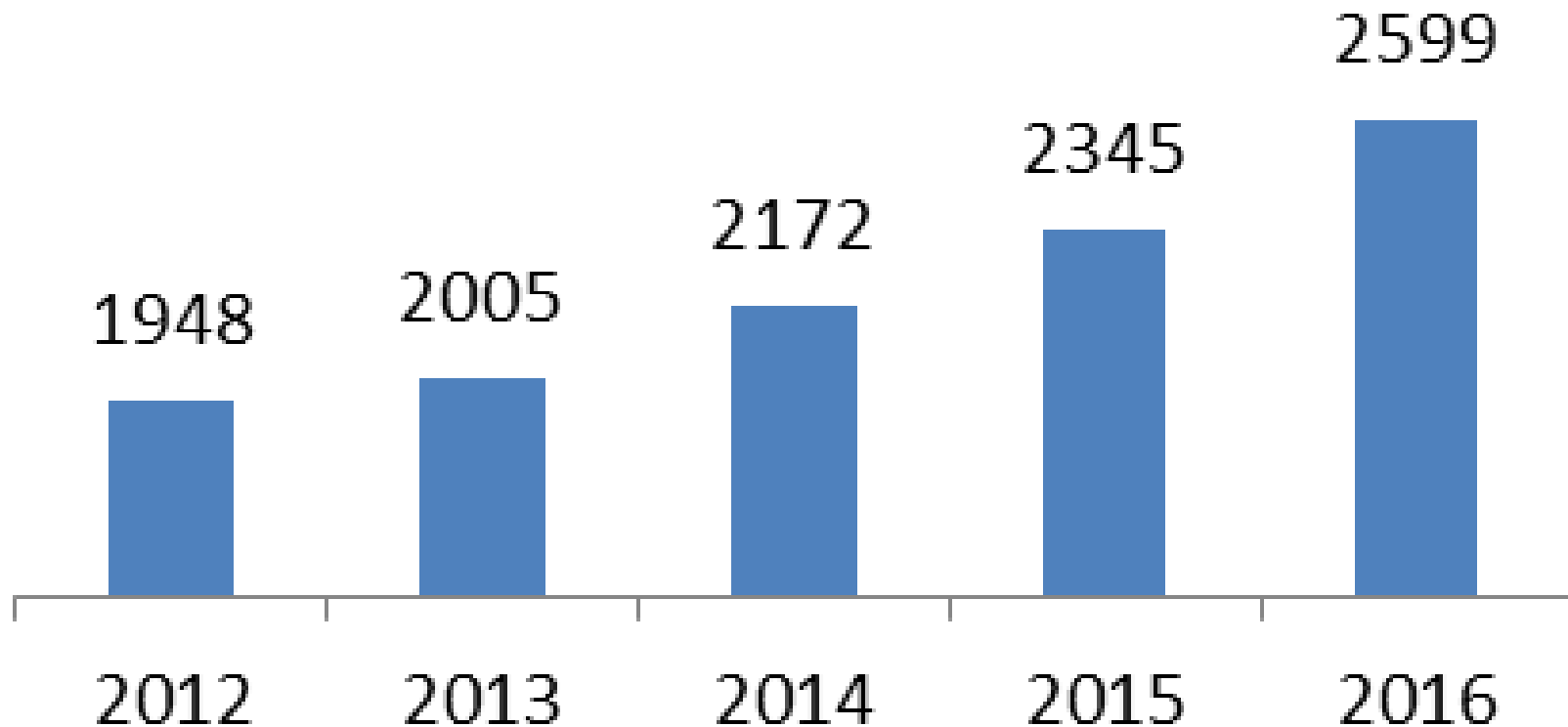
Supervised Outcomes for CPAT 1s and 2s



Cost Savings of Pretrial Supervision

- Worked with Justice System consultant to develop a Pretrial Cost Model. (2015)
- Estimated cost per day of pretrial supervision compared to marginal cost of a day in jail
- Estimated savings of \$5.7 million in 2015 by supervising pretrial defendants in the community rather than keeping them in jail.

Pretrial Supervision Intakes



Supervision Matrix

- Why we built it
 - To align with national research and best practice
 - To incorporate dangerousness and seriousness into our decision-making in a more systematic way
 - To allocate supervision resources to the highest risk and need
 - To have more transparency regarding how defendants are being supervised

Supervision Matrix

- How we built it
 - Similar models in Denver and Mesa Counties
 - Developed in consultation with system partners
 - Risk as defined by CPAT
 - Dangerousness and Seriousness
 - Charge type
 - Enhancers

New Boulder County Supervision Matrix

CPAT SCORE	NON VRA OFFENSES AND MISDEMEANOR VRA OFFENSES	MISDEMEANOR DV AND SEX OFFENSE	OTHER VRA FELONIES	FELONY DOMESTIC VIOLENCE ENHANCER	FELONY SEX OFFENSE
1	NO SUPERVISION	NO SUPERVISION	NO SUPERVISION	NO SUPERVISION	REGULAR SUPERVISION
2	NO SUPERVISION	NO SUPERVISION	REGULAR SUPERVISION	REGULAR SUPERVISION	REGULAR SUPERVISION
3	NO SUPERVISION	REGULAR SUPERVISION	REGULAR SUPERVISION	ENHANCED SUPERVISION	ENHANCED SUPERVISION
4	REGULAR SUPERVISION	REGULAR SUPERVISION	ENHANCED SUPERVISION	ENHANCED SUPERVISION	ENHANCED SUPERVISION

Multiple DUI Supervision Grid (Draft)

	Level 1 No Prior Convictions	Level 2 One Prior Conviction	Level 3 Two Prior Convictions	Level 4 Three or More Prior Convictions or Felony DUI	Level 5 Maximum
Bond Commissioner Recommendation	No Supervision	Regular Supervision Alcohol and/or Drug Monitoring	Enhanced Supervision Alcohol and/or Drug Monitoring	Enhanced Supervision Electronic Alcohol Monitoring (EAM) Drug Monitoring (If drugs appear to contribute to community safety risk)	Enhanced Supervision Electronic Alcohol Monitoring (EAM) Electronic Home Monitoring (EHM)

Enhancers:

- 1 or more pending DUI offenses in the last year.
- BAC of .200 or higher on current offense
- CPAT 4

Preliminary Data

For CPAT 1s and 2s	7/6/2016-8/22/2016		7/6/2017-8/22/2017	
Completed Interviews	308		273	
PTS Recommended	152	49%	74	27%
PTS Ordered	157	51%	76	28%
SAM Recommended	103	33%	48	18%
SAM Ordered	106	34%	61	22%
PTS Agreement	292	95%	263	96%
SAM Agreement	298	97%	254	93%

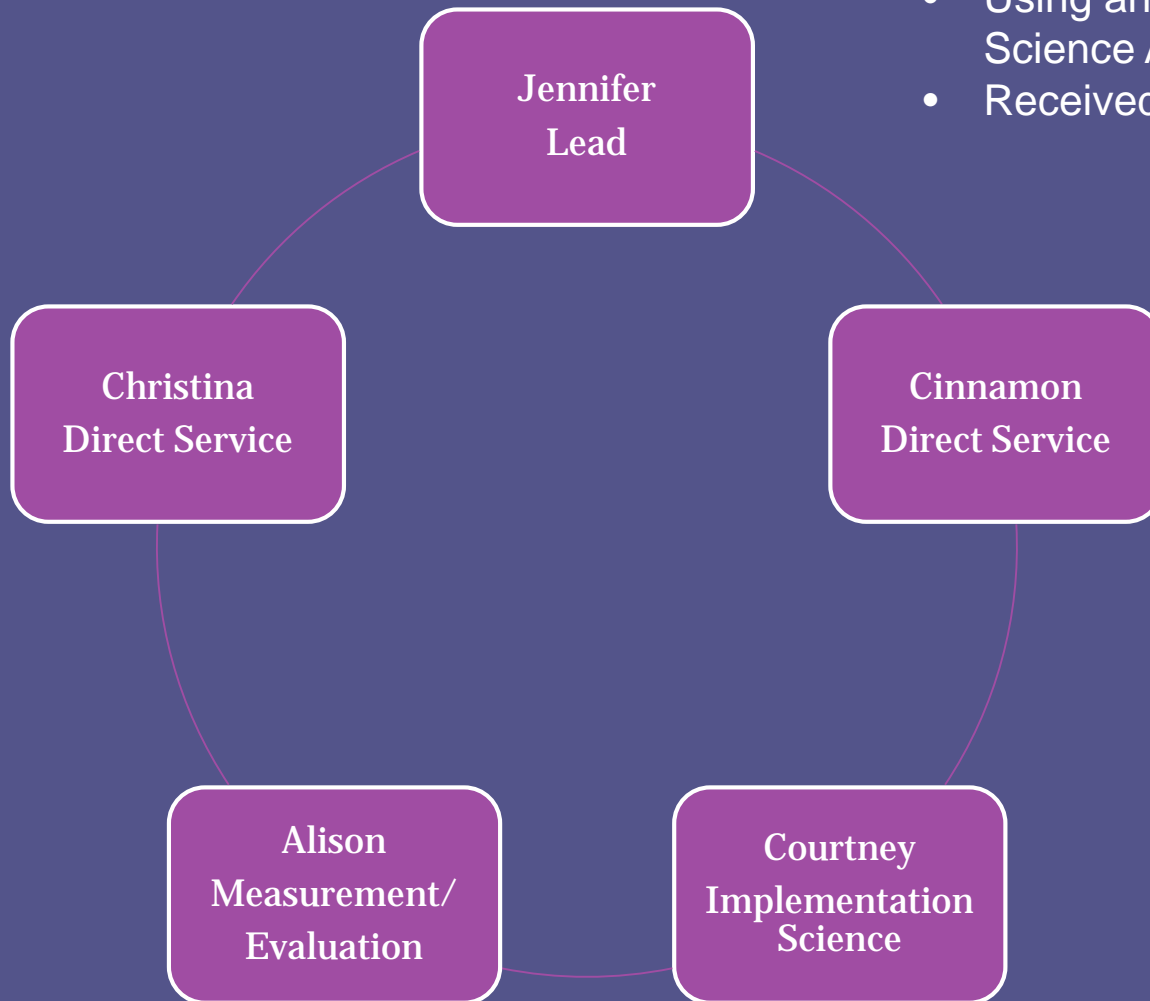
Additional New Pretrial Practices

- Domestic Violence Screening Instrument (DVSI)
- Court Date Reminders for all defendants screened by Bond Commissioners
- Regular and Enhanced Supervision Levels
- 30 Day Review
- Specialized Caseloads

Specialized Caseloads

- Allocated two positions out of existing budget for Specialized Case Managers
- Target Populations
 - Low risk (CPAT 1s and 2s) ordered to PTS with a moderate to severe substance use disorder as a driving criminal risk factor.
 - Low functioning (e.g. mentally ill, TBI, cognitive impairment, etc.) pretrial defendants ordered to PTS.

Specialized Caseload Implementation Team



- Using an Implementation Science Approach
- Received TA from EPIC

Purpose/Scope of Specialized Caseloads

- Engage and connect services to those with mental health and/or substance use disorders
- Provide pretreatment to substance abusing individuals on pretrial and create a connection to services in the community
- Supervise and connect mentally ill/low functioning pretrial defendants to appropriate services

Desired Short Term Outcomes

- Build motivation for behavior change
- Engagement in treatment
- Court appearance
- Public safety
- Technical compliance/bond revocations
- Off-ramping from CJ System/On-ramping into treatment

Pretrial Measurement and Evaluation

- Building in fidelity measures
- Building in better outcomes tracking
- Regular reporting to staff and stakeholders
- Continuous Quality Improvement Cycle

Contact

Monica Rotner, LCSW, CACIII

303-441-3665

mrotner@bouldercounty.org