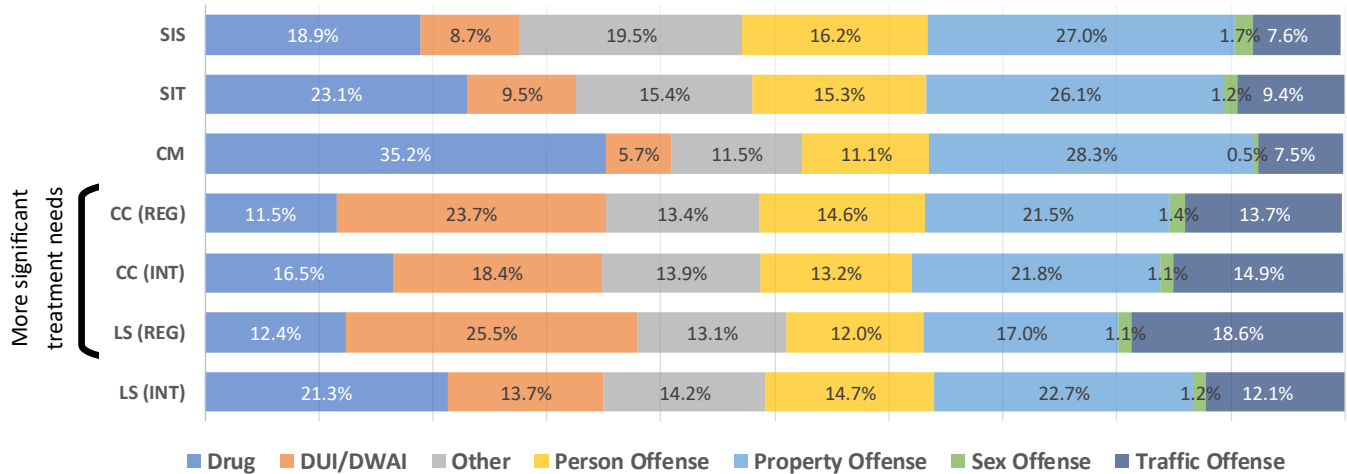


Colorado Probation

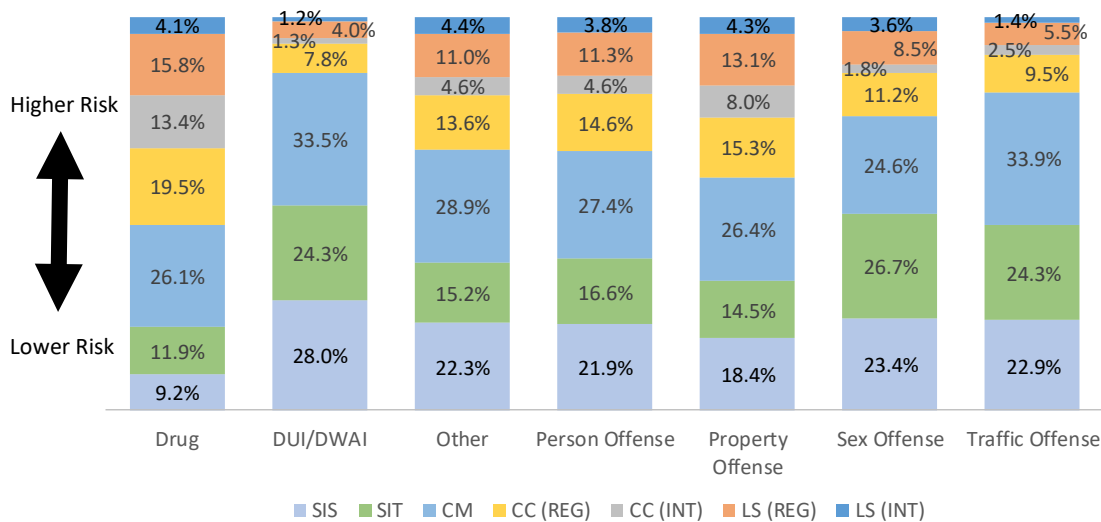
Colorado Probation's Population: Risk-Need-Responsivity Strategies

Typologies are a research-informed practice that categorize adult probationers according to similar risk and need profiles to better tailor supervision strategies in alignment with the Risk-Needs-Responsivity framework. The profiles are listed below with distinguishing characteristics for each profile.

MOST SERIOUS CRIME TYPE CONVICTION BY TYPOLOGY FY19 TERMINATIONS



DISTRIBUTION OF TYPOLOGIES WITHIN THE MOST SERIOUS CRIME TYPE CONVICTION FY19 TERMINATIONS



Note: "Other" offenses include a variety of crimes including, but not limited to, harassment, forgery, false information to a pawnbroker, criminal impersonation, failure to register, menacing and weapons possession.

Colorado Probation Typologies	
Limit Setter (LS)	Higher risk with anti-social orientation. LS-Intensive or LS-regular supervision is available.
Casework Control (CC):	Higher risk and high need (i.e. substance abuse, mental health or co-occurring) and stability issues. CC-Intensive or CC-regular supervision is available.
Case Management (CM):	Medium risk with some substance use issues and some protective factors.
Selective Intervention-Treatment (SIT):	Lower risk with a single risk factor typically connected to treatment needs, either mental health, substance use, or both.
Selective Intervention-Situational (SIS):	Lower risk with no distinguishing risk factors, high levels of stability and protective factors.

Higher Risk
↑
↓
Lower Risk