

Gender, Race and Ethnicity of Misdemeanants on Probation

Erin Crites

Division of Probation Services

November 7, 2022

Presented to the Community Corrections Task Force
of the Colorado Commission on Criminal and Juvenile Justice

Colorado Probation

Most people are on probation for a misdemeanor

- **2/3** of new probation cases
- **3/4** of terminated probation cases
- **30%** of misdemeanants terminated from probation in FY20 were classified as high-risk or high-risk and high-need

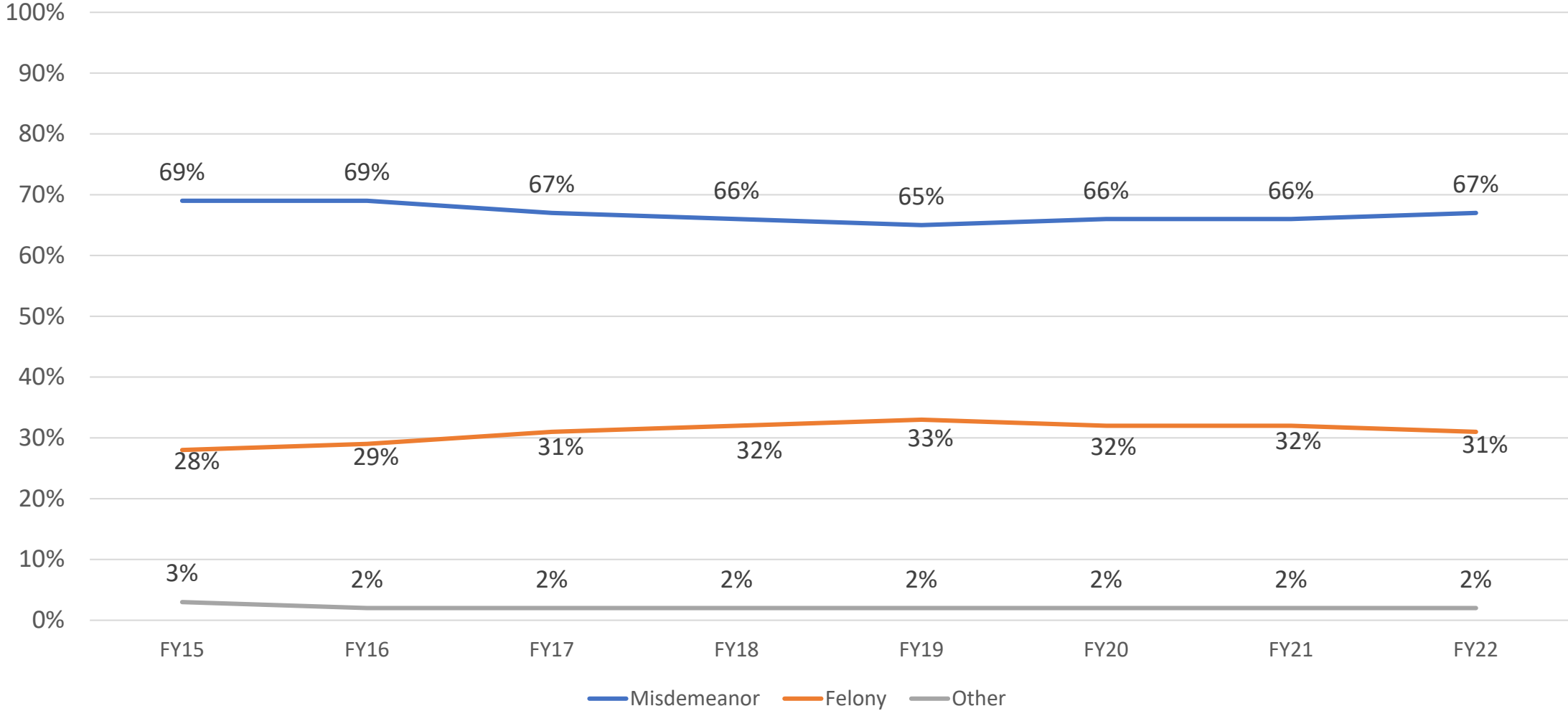
Data have limitations

- Categories are limited for race and gender
- Race and ethnicity are combined
- Gender is coded in a binary measure
- Data are not typically self-report

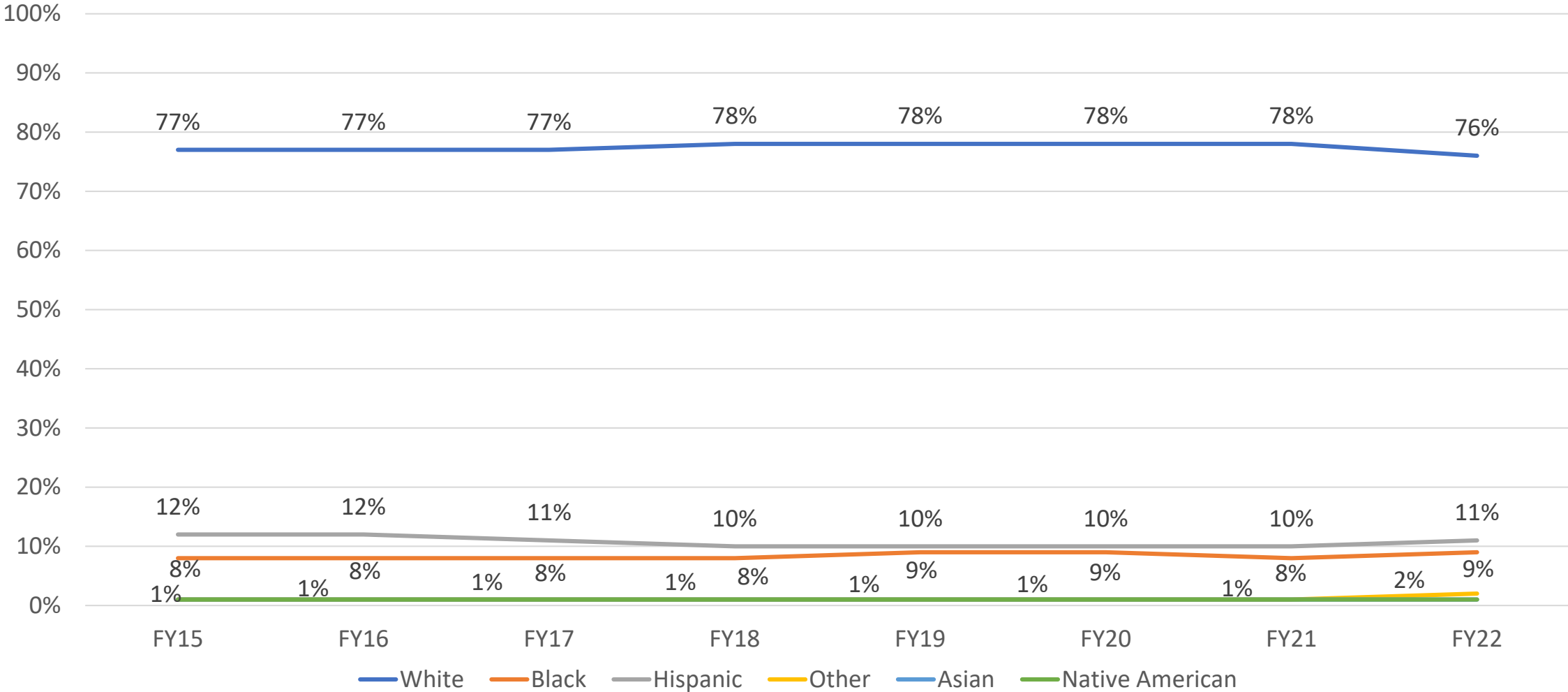
Distributions of race and gender are stable

- Nearly **80%** white
- Approximately $\frac{3}{4}$ male

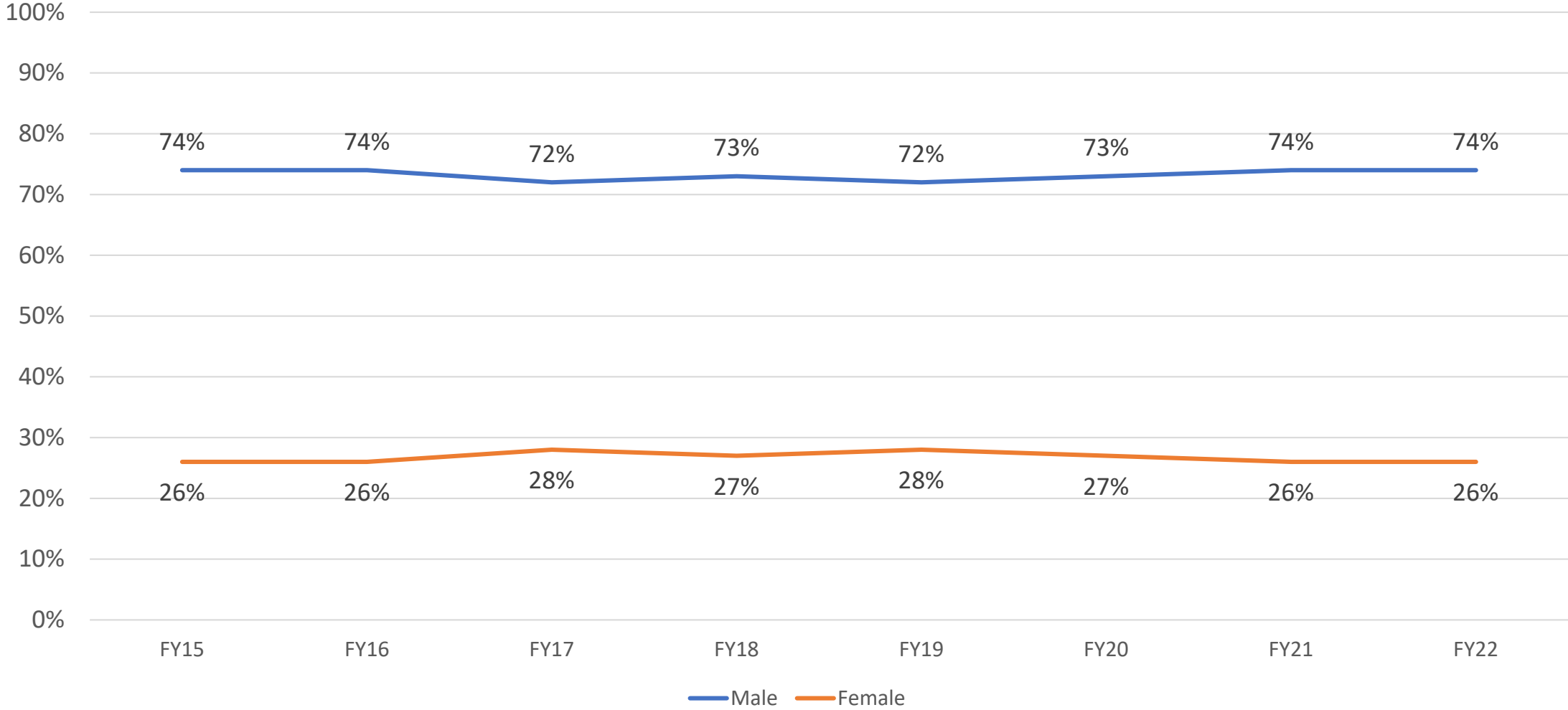
Population Distributions for New Probationers-Offense Class



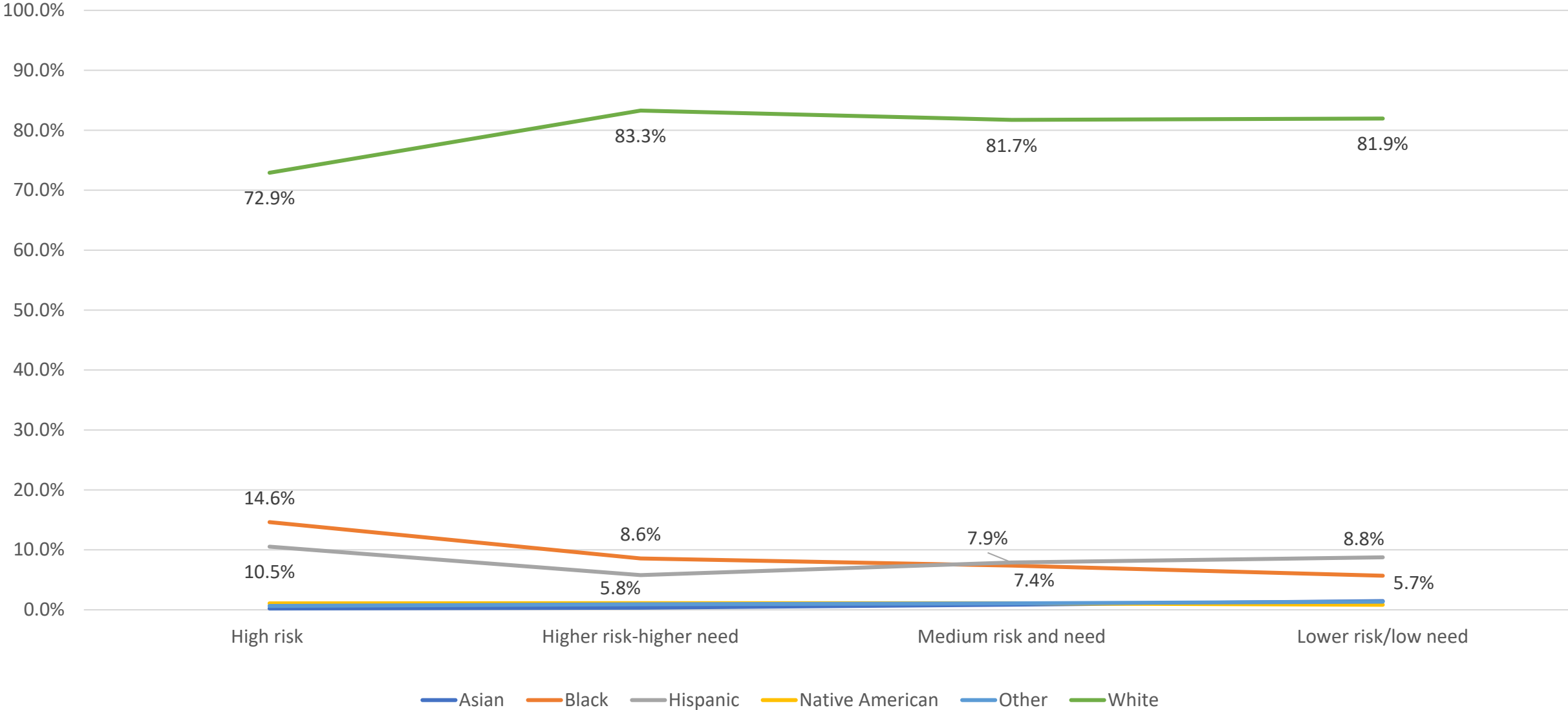
Population Distributions for New Probationers-Race/Ethnicity



Population Distributions for New Probationers-Gender



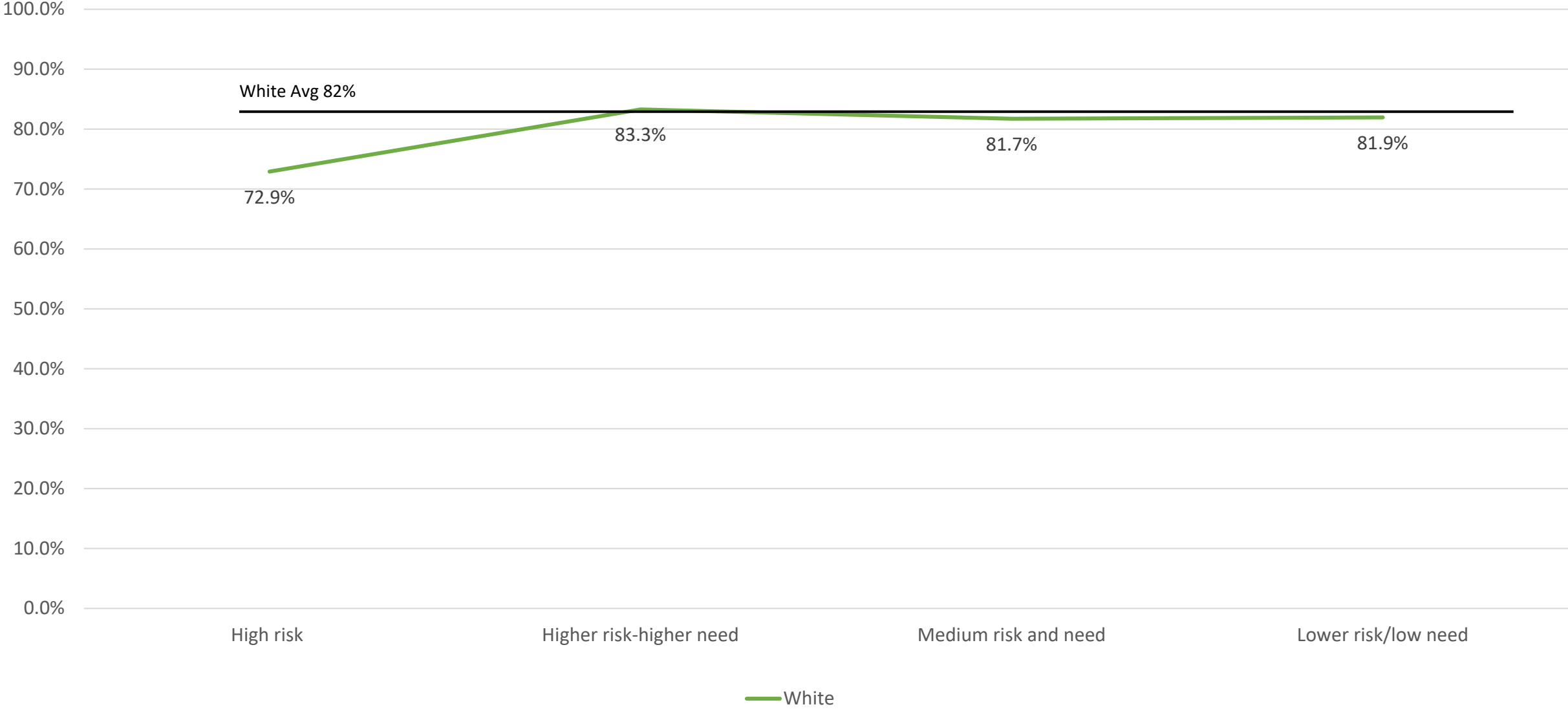
FY20 Terminations: Risk-Need and Race/Ethnicity for Misdemeanants



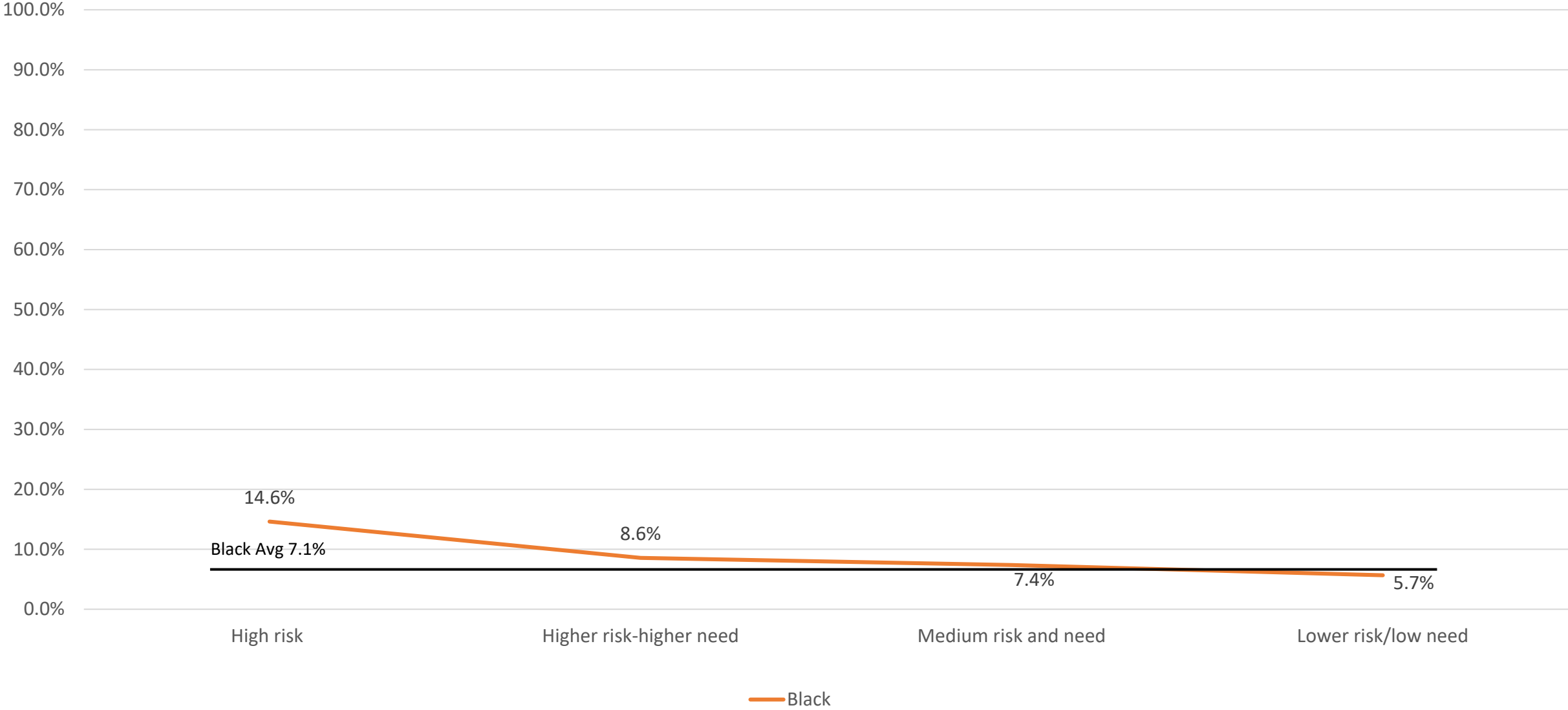
Values for graph on previous slide

Risk and Need	White		Black		Hispanic		Asian		Native American		Other		Total N
	%	N	%	N	%	N	%	N	%	N	%	N	
High risk	72.9%	339	14.6%	68	10.5%	49	0.2%	1	1.1%	5	0.6%	3	465
Higher risk-higher need	83.3%	4,578	8.6%	471	5.8%	318	0.3%	19	1.1%	61	0.9%	50	5,497
Medium risk and need	81.7%	4,212	7.4%	380	7.9%	407	0.9%	44	1.1%	56	1.1%	55	5,154
Lower risk/low need	81.9%	7,481	5.7%	518	8.8%	799	1.4%	132	0.8%	76	1.3%	123	9,129
Total	82.0%	16,610	7.1%	1,437	7.8%	1,573	1.0%	196	1.0%	198	1.1%	231	20,245

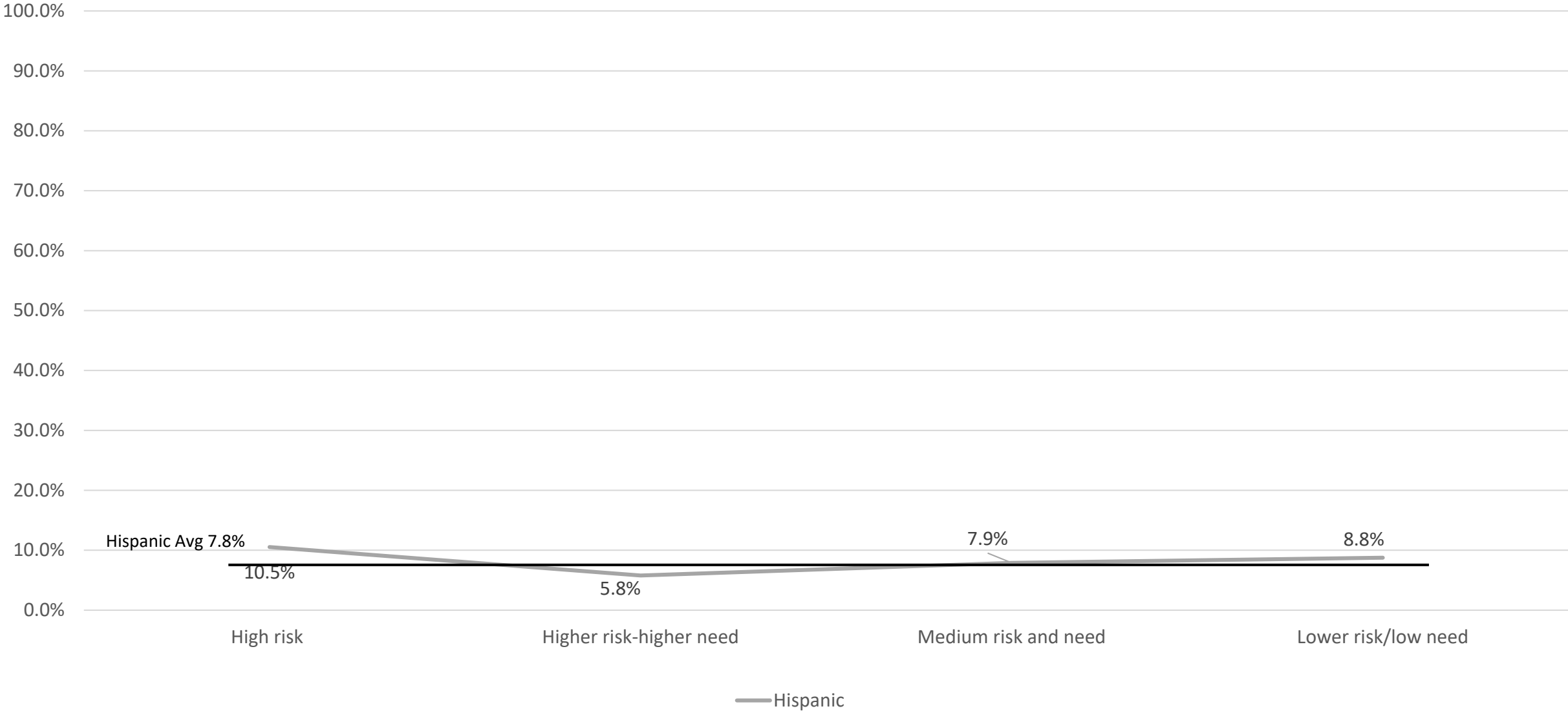
Risk/Need and Race/Ethnicity for Misdemeanants



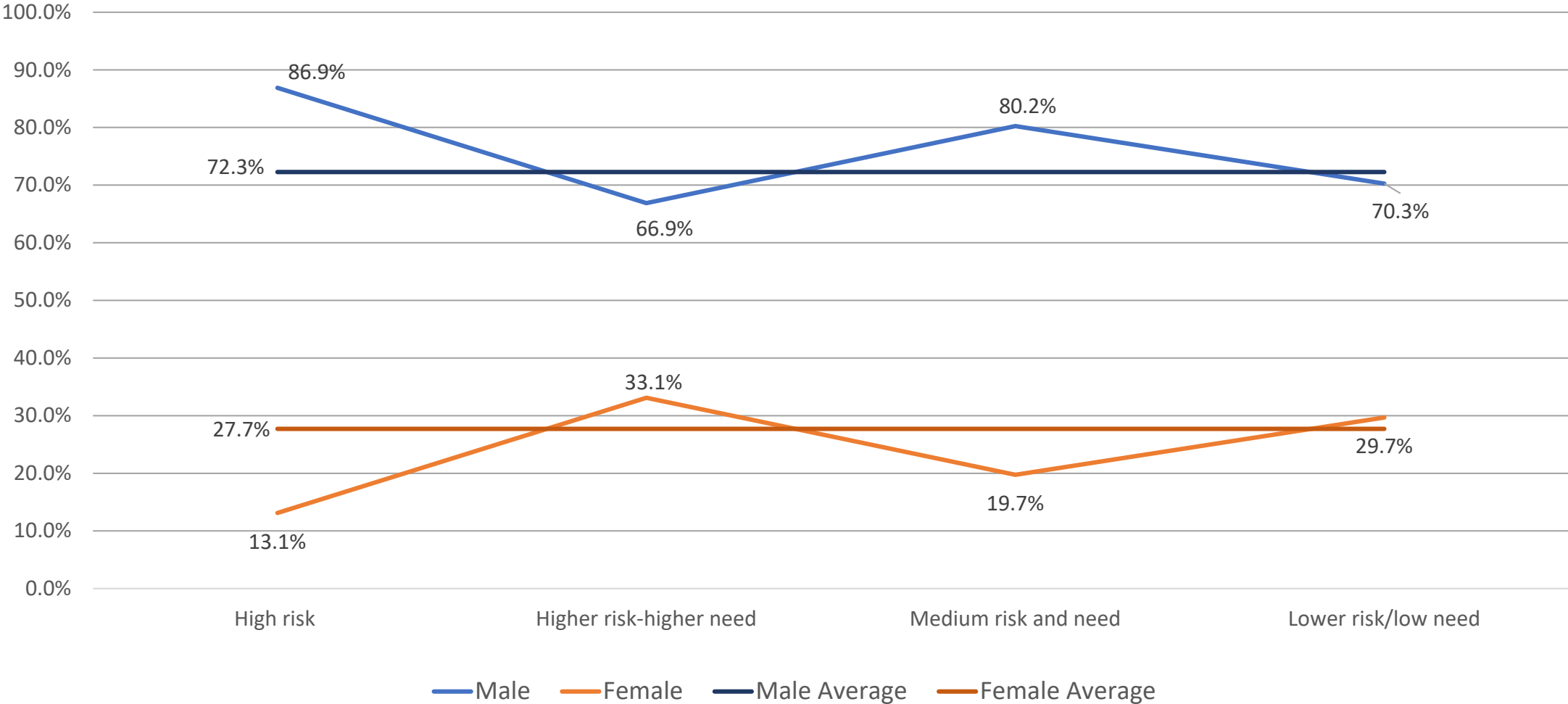
Risk/Need and Race/Ethnicity for Misdemeanants



Risk/Need and Race/Ethnicity for Misdemeanants



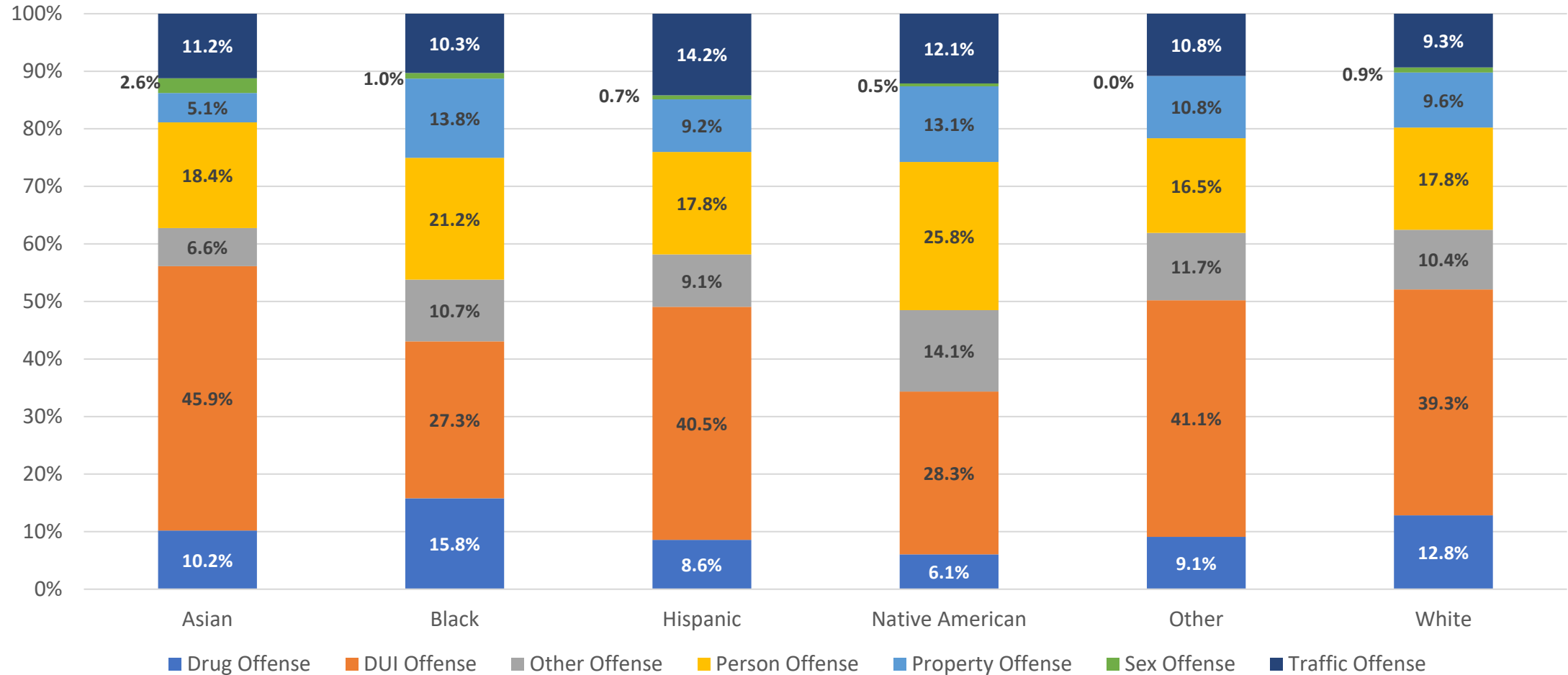
Risk/Need and Gender for Misdemeanants



Values for graph on previous slide

Risk and Need	Male		Female		Not Reported		Total N
	%	N	%	N	%	N	
High risk	86.9%	404	13.1%	61	0.0%	0	465
Higher risk-higher need	66.9%	3,676	33.1%	1,820	0.0%	1	5,497
Medium risk and need	80.2%	4,136	19.7%	1,017	0.0%	1	5,154
Lower risk/low need	70.3%	6,414	29.7%	2,710	0.1%	4	7,481
Total	72.3%	14,630	27.7%	5,608	0.0%	7	20,245

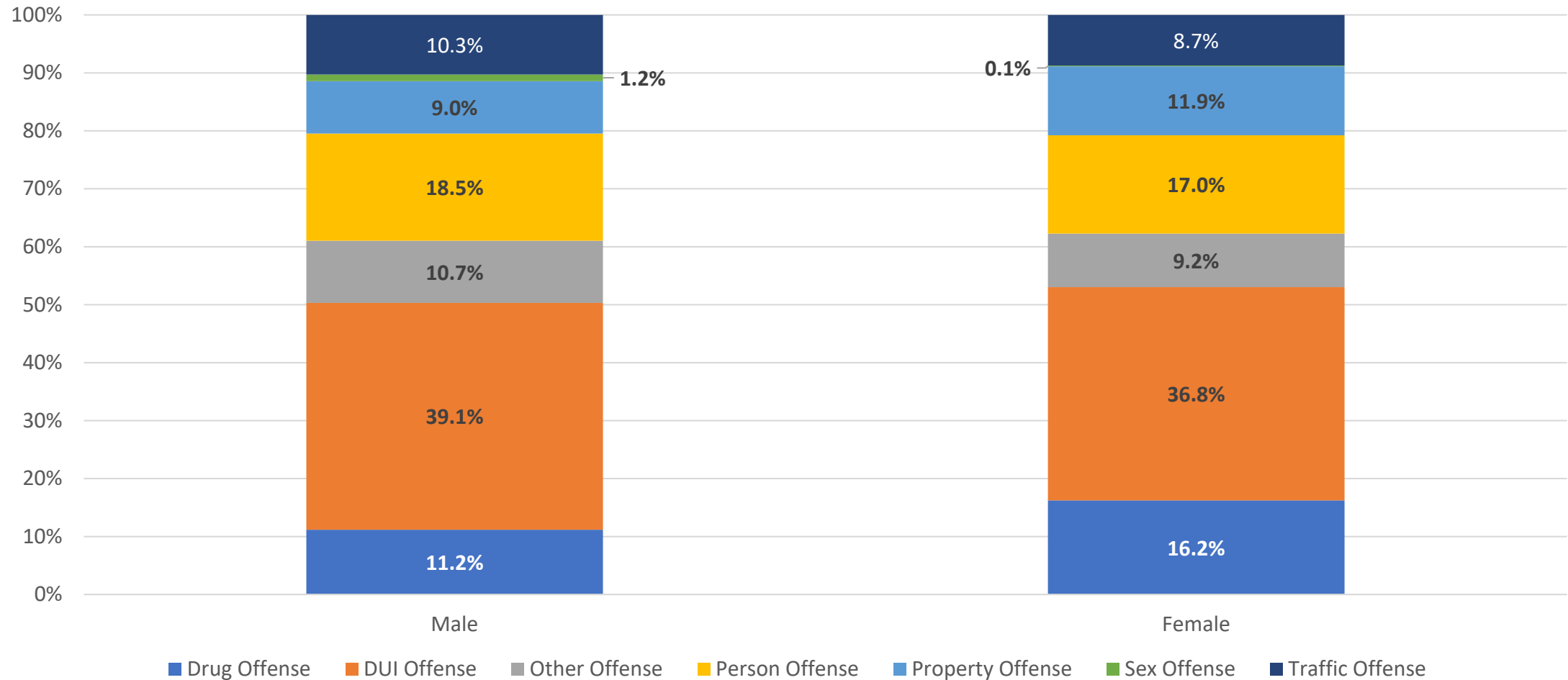
Offense type by race



Values for graph on previous slide

	Drug Offense	DUI Offense	Other Offense	Person Offense	Property Offense	Sex Offense	Traffic Offense	Total
Asian	20	90	13	36	10	5	22	196
Black	227	392	154	304	198	14	148	1437
Hispanic	135	637	143	280	144	11	223	1573
Native American	21	95	27	38	25		25	198
Other	21	95	27	38	25		25	231
White	2,132	6,520	1,722	2,950	1,588	147	1,551	16,610
Total	2,547	7,790	2,087	3,659	1,991	178	1,993	20,245

Offense distribution within gender



Values for graph on previous slid

	Drug Offense	DUI Offense	Other Offense	Person Offense	Property Offense	Sex Offense	Traffic Offense	Total
Male	1,634	5,727	1,568	2,707	1,322	170	1,502	14,630
Female	911	2,063	518	952	667	8	489	5,608

Key Takeaways:

- Minorities are over-represented in high-risk group and underrepresented in high need group
- Men are over-represented in high-risk group and underrepresented in high need group
- Types of offenses vary by race and gender
 - White probationers drive the averages
 - Women are more likely to be on probation for drug offenses compared to men